

Withdrawable circuit breaker in Switzerland





Overview

What is the difference between fixed switchgear and withdrawable circuit breaker?

As mentioned earlier, fixed switchgear has the disadvantage of being difficult to overhaul when the circuit breaker fails, leading to prolonged power outages. Therefore, withdrawable circuit breakers better meet customer requirements. Is the center-mounted, horizontal draw-out structure the only type available?

.

Should you choose a fixed or withdrawable circuit breaker?

One of the critical decisions when designing or upgrading switchgear is choosing between fixed and withdrawable circuit breakers. Each type has its advantages and is suited for different applications. The choice depends on various factors, including reliability, maintenance requirements, operational flexibility, and cost.

What is a withdrawable circuit breaker?

Applications that require frequent switching, testing, or reconfiguration of circuits benefit from withdrawable circuit breakers. They enable quick removal and replacement without shutting down the entire switchgear, making them ideal for industrial plants, power stations, and mission-critical facilities.

Why are circuit breakers important?

Circuit breakers play a vital role in electrical switchgear systems, ensuring the protection and control of electrical networks. One of the critical decisions when designing or upgrading switchgear is choosing between fixed and withdrawable circuit breakers. Each type has its advantages and is suited for different applications.



Withdrawable circuit breaker in Switzerland



[Circuit breaker 3WA, withdrawable](#)

Sep 25, 2024 · Energy Electrical power distribution Low-Voltage Components Protection devices Air Circuit Breakers SENTRON 3WA air circuit breakers SENTRON 3WA1 air circuit breakers, ...

[Fixed Device vs Withdrawable Device](#)

May 8, 2025 · When designing electrical projects, depending on the criticality of the installation and its operation, it is essential to consider the use of fixed or withdrawable devices in ...



[Withdrawable Indoor Circuit Breaker EDI 36 -72.5 kV](#)

2 days ago · The EDI SK is an indoor live tank SF 6 Autopuffer TM circuit breaker. It has a proven design and 30 years of experience, and 1500 installations globally. The breaker offers a ...

[Vacuum circuit-breaker on withdrawable part - high duty](#)

Mar 15, 2024 · The circuit-breaker can only be closed when the withdrawable part is precisely in the defined test position or service position (mechanical inter lock, with additional electrical



...



[Withdrawable vs Fixed Switchgear: Which Should You Specify?](#)

Jul 24, 2025 · Withdrawable switchgear allows breakers to be removed and replaced without shutting down the entire system. This reduces downtime and allows fast recovery from ...



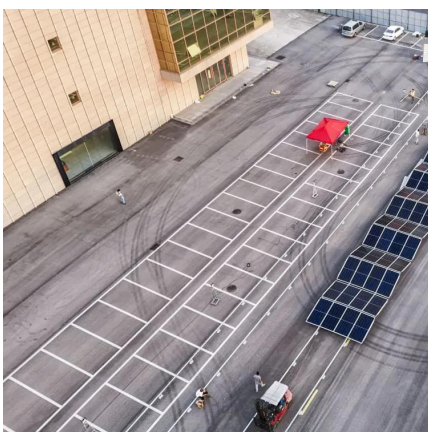
[About the switchgear in several different circuit breaker forms](#)

Dec 3, 2025 · In switchgear applications, the withdrawable structure of circuit breakers can be divided into three main types, as detailed below: As mentioned earlier, fixed switchgear has ...



[Switchgear Circuit Breakers: When to Use Fixed vs. Withdrawable ...](#)

Feb 17, 2025 · Circuit breakers play a vital role in electrical switchgear systems, ensuring the protection and control of electrical networks. One of the critical decisions when designing or ...





Contact Us

For catalog requests, pricing, or partnerships, please visit:
<https://llsolarenergy.co.za>

Scan QR Code for More Information



<https://llsolarenergy.co.za>