

Which side of the solar glass is the front side





Overview

What is a solar glass substrate?

Manufacturers of crystalline silicon solar modules apply glass substrates on the front side of the solar modules. This front glass will either be a patterned glass or a glass with anti-reflective coating (AR). As in all other glass manufacturing processes, solar glass substrates are subject to defects during production.

What type of glass do solar panels use?

Mono-Glass Solar Panels: Typically employ 3.2mm fully tempered glass, with a backsheet used on the rear. **Dual-Glass Solar Panels:** Generally utilize 2.0mm or 1.6mm semi-tempered glass for both front and back sides. Semi-tempered glass falls between standard flat glass and fully tempered glass in terms of impact resistance and temperature tolerance.

Why do solar panels use glass?

This means more sunlight can directly reach the solar cells through the glass, increasing the overall energy conversion efficiency of the solar panel. **Wide Spectrum Capture:** This glass effectively captures light within the spectrum ranging from 380 to 1100 nanometers, harnessing the primary energy bands of sunlight.

Why do solar panels have a bezel?

Reduces Contamination and Moisture Intrusion: The presence of a bezel reduces the amount of dirt, dust and moisture that can enter the underside of the panel, helping to maintain the cleanliness and performance of the panel. **Simplifies Installation:** Borders often feature pre-mounted holes and clamps that make solar panel installation easier.



Which side of the solar glass is the front side



Photos of front side as well as rear side of solar cell.

The schema of the final cell manufactured according to the process flow detailed in Figure 8 is shown in Figure 9 as well as the photos of cell front side and rear side are shown on Figure 10.

What Are The Main Components of Solar Panels?

Dec 29, 2023 · Solar Panel Encapsulation Film
Encapsulation films, also known as solar panel encapsulants, are essential components in solar panels. Positioned between the front glass ...



Which side is the front of the solar panel

Oct 30, 2025 · Overview In solar cells, the front side is commonly recognized as the side that faces the sun, characterized by a layer of transparent material that allows sunlight to ...

The structure of a photovoltaic module

2 days ago · Front glass The front glass is the heaviest part of the photovoltaic module and it has the function of protecting and ensuring robustness to the entire photovoltaic module, ...



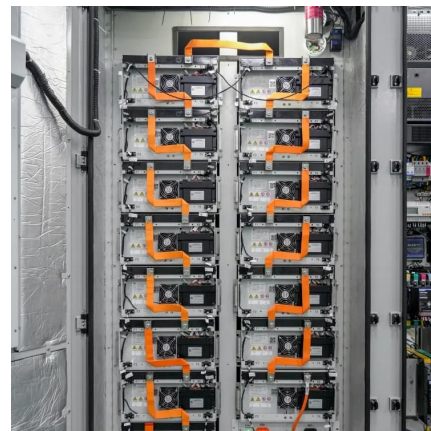
Which side of the solar photovoltaic panel faces up?

May 27, 2024 · The orientation of a solar photovoltaic panel plays a crucial role in maximizing solar energy absorption throughout the day. 1. The upper surface of the panel is typically the ...



Which side of the solar cell is facing up? , NenPower

Mar 13, 2024 · 1. The side of the solar cell that is facing up is the one that features the photovoltaic (PV) cells, designed to capture sunlight and convert it into electricity. The upper ...



How to distinguish the front and back of solar back panel

Aug 13, 2024 · The front side of a solar panel is engineered to maximize sunlight exposure through a reflective, glass-like surface. This design aspect not only aids in capturing more ...



The glass substrate represents the front side of a solar cell ...

The glass substrate represents the front side of a solar cell and the CdTe layer represents the backside of a solar cell. The glass substrate, SnO₂, and CdS layers are transparent to a 658 ...



Contact Us

For catalog requests, pricing, or partnerships, please visit:
<https://llsolarenergy.co.za>

Scan QR Code for More Information



<https://llsolarenergy.co.za>