

Which battery cabinet should be connected first the positive pole or the negative pole





Overview

Should you connect a positive or negative battery terminal first?

In conclusion, when connecting a battery, it is generally recommended to connect the negative or ground terminal first. This can help ensure safety and prevent any potential damage to the battery or connected devices. When attaching or connecting a battery, there is often a debate on whether to connect the positive or negative terminal first.

Should a battery be connected to a ground or positive terminal?

Always remember to connect the negative terminal first, followed by the positive terminal, to ensure a secure and stable battery connection. When connecting a battery, whether it is attaching the ground or positive terminal first, proper safety measures need to be followed to avoid potential accidents or damage.

What is a positive terminal in a battery?

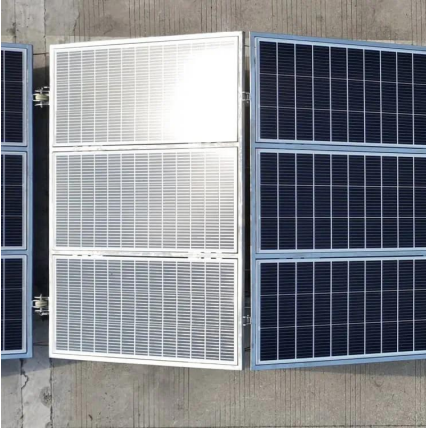
The positive terminal of a battery is where the electrical current originates, while the negative terminal serves as the return path for the current. By connecting the positive terminal first, you establish a clear path for the current to flow through the system.

Should you connect a negative battery cable first?

No, you should never connect the negative battery cable first. As an automotive expert with years of hands-on experience, I can confidently say this small mistake could lead to sparks, electrical damage, or even explosions. Many DIYers assume the order doesn't matter— but that myth could cost you hundreds in repairs.



Which battery cabinet should be connected first the positive pole or



[When Connecting a Battery Which Terminal First? A Breakdown](#)

Apr 25, 2025 · The battery's positive terminal must be connected first to the live battery's positive terminal. Then, you should attach the live battery's negative terminal to a grounding point on ...

[Should You Connect Positive or Negative ...](#)

Jul 1, 2025 · Replacing a car battery may seem like a simple task, but one small mistake can lead to serious consequences. One of the most ...



[Do You Connect the Negative or Positive Battery Cable First?](#)

Jul 28, 2025 · No, you should never connect the negative battery cable first. As an automotive expert with years of hands-on experience, I can confidently say this small mistake could lead ...



[Which Terminal Do You Connect First on a Car Battery: ...](#)

Aug 10, 2025 · Once the positive is secure, connect the negative terminal. This sequence reduces risk of sparks. Remember, safety first when handling car batteries. Wear protective gear like ...



Proper Procedure: Which Terminal to Connect First When Installing a Battery

Oct 28, 2025 · Connecting the positive terminal first allows for a safer installation process, as it reduces the risk of accidental short circuits. Negative-Ground Battery If you are installing a ...



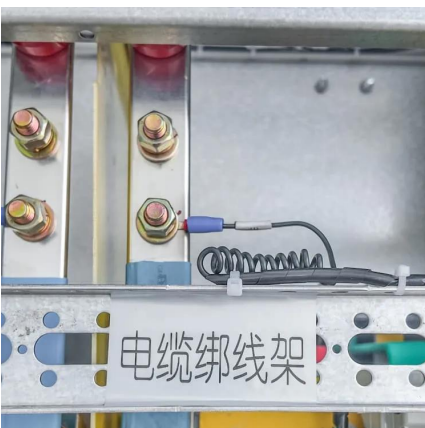
Which Terminal Do You Connect First on a ...

Aug 10, 2025 · Once the positive is secure, connect the negative terminal. This sequence reduces risk of sparks. Remember, safety first when ...



Which Battery Terminal Should Be Connected First: Positive or Negative?

Nov 28, 2025 · In conclusion, the order in which the battery terminals are connected is crucial to prevent risks, damages, and potential harm. Always remember to connect the positive terminal ...





Do You Hook Up the Negative or Positive First on a Battery?

Following the "positive first, negative last" connection order secures the high-risk live terminal before the ground path is completed. Preparing Terminals and Avoiding Common Mistakes ...



Should You Connect Positive or Negative Terminal First? , Battery ...

Jul 1, 2025 · Replacing a car battery may seem like a simple task, but one small mistake can lead to serious consequences. One of the most common questions drivers ask is whether they ...

When Connecting a Battery Which Terminal ...

Apr 25, 2025 · The battery's positive terminal must be connected first to the live battery's positive terminal. Then, you should attach the live battery's ...



Which Battery Terminal Do You Connect First?

Mar 2, 2025 · When connecting a car battery, always connect the positive (+) terminal first before attaching the negative (-) terminal to prevent electrical hazards. This sequence reduces the ...



[Connecting Batteries Safely: Do I Connect Positive or Negative First](#)

When it comes to working with batteries, whether you're a seasoned professional or a DIY enthusiast, understanding the proper connection procedure is crucial for safety and efficiency. ...



When Installing a Car Battery Which Terminal Should be Connected First

Apr 29, 2023 · When installing a new car battery or replacing an old one, it is important to connect the terminals correctly. However, many people are not sure which terminal to connect to first - ...

Contact Us

For catalog requests, pricing, or partnerships, please visit:
<https://llsolarenergy.co.za>

Scan QR Code for More Information



<https://llsolarenergy.co.za>