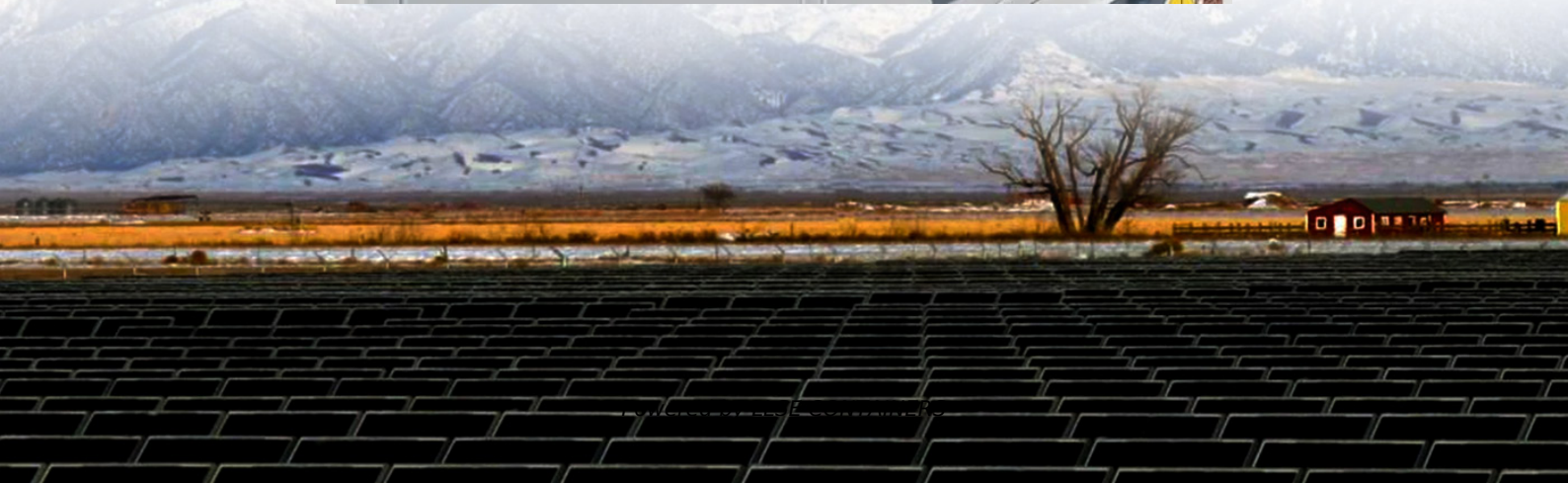


Where is the address of the Ulaanbaatar communication network base station





Overview

Where is Ulaanbaatar railway station?

Ulaanbaatar Railway Station is located in the southwest of Ulaanbaatar, the capital of Mongolia. Built in 1949 by the Soviets, this station is now the biggest station and the most important transportation hub in Mongolia. There are domestic trains linking Ulaanbaatar station with other cities in Mongolia.

Why is Ulaanbaatar station important?

The station acts as a crucial connection point for domestic train routes, linking Ulaanbaatar with numerous cities across Mongolia. Also, as a significant juncture along the renowned Trans-Siberian Railway, which spans Russia, Mongolia, and China, Ulaanbaatar Station.

Where is Ulaanbaatar located?

The city is located in north central Mongolia at an elevation of about 1,300 meters (4,300 feet) in a valley on the Tuul River. Ulaanbaatar is the political, commercial, cultural, and scientific center of Mongolia and an important financial center of Central Asia. It is a major transportation hub.

Why is it called Ulaanbaatar?

The name "Ulaanbaatar" translates to "Red Hero," a title bestowed in 1924 to honor Mongolia's independence from China, facilitated by Soviet support. Ulaanbaatar Railway Station in Ulaanbaatar, Mongolia - sight map, attraction information, photo and list of walking tours containing this attraction.



Where is the address of the Ulaanbaatar communication network ba



[Ulaanbaatar Railway Station, Ulaanbaatar](#)

Ulaanbaatar Railway Station in Ulaanbaatar, Mongolia - sight map, attraction information, photo and list of walking tours containing this attraction. Get offline map and directions using our ...

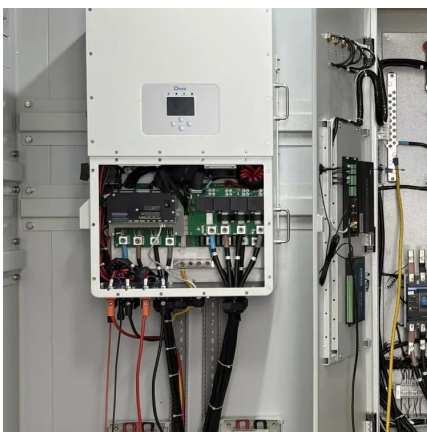
[Ulaanbaatar Map , Mongolia , Detailed Maps of Ulaanbaatar \(Ulan Bator\)](#)

Oct 9, 2024 · Ulaanbaatar is the capital and most populous city of Mongolia. It has a population of 1.6 million and is the coldest capital city in the world in terms of average annual temperature.



Ulaanbaatar railway

Aug 24, 2024 · UBTZ is a leading transport organization that contributes significantly to the social and economic development of Mongolia. UBTZ is owned equally by the governments of the ...



[Information Communications Network LLC Overview](#)

Oct 1, 2024 · Information Communications Network LLC (Mongolian: ?????????? ?????????? ??????? ???) is a leading provider of broadband services for the carrier marketplace and ...

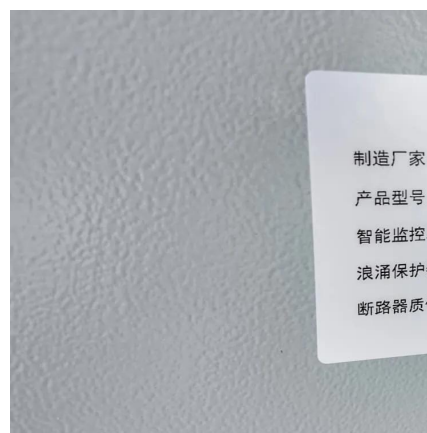


[Ulaanbaatar Transportation: Get in and Get Around](#)

Aug 13, 2025 · The train is another convenient choice of Ulaanbaatar transportation (See also Ulaanbaatar Train Station). The train journey to Ulaanbaatar is possible from Russia, Moscow, ...

[Ulaanbaatar Railway Station](#)

Jan 10, 2025 · Ulaanbaatar Railway Station is located in the southwest of Ulaanbaatar, the capital of Mongolia. Built in 1949 by the Soviets, this station is now the biggest station and the most ...



[3G / 4G / 5G coverage in Ulaanbaatar, Mongolia](#)

This map represents the coverage of 2G, 3G, 4G and 5G mobile network in Ulaanbaatar. See also : mobile bitrates map in Ulaanbaatar and Unitel Mobile, Mobicom Mobile mobile networks ...



Contact Us

For catalog requests, pricing, or partnerships, please visit:
<https://llsolarenergy.co.za>

Scan QR Code for More Information



<https://llsolarenergy.co.za>