

# **What is the wind and solar complementary DNA for solar container communication stations**





## Overview

---

Which cluster of wind power stations exhibit the weakest complementarity with radiation?

Analysis of the matrix reveals that the 4th, 5th, 7th, and 8th clusters of wind power stations exhibit the weakest complementarity with the radiation of photovoltaic stations. In contrast, the 5th, 7th, 8th, and 10th clusters of photovoltaic stations similarly demonstrate poor complementarity with the wind speed of wind power stations.

Do wind power and photovoltaic stations complement each other?

Typically, wind power and photovoltaic stations are situated at different locations, necessitating the study and analysis of wind speed-radiation complementarity across various regions. This study focuses on wind power stations and photovoltaic stations in Qinghai and Gansu provinces to explore their complementarity.

Does solar and wind energy complementarity reduce energy storage requirements?

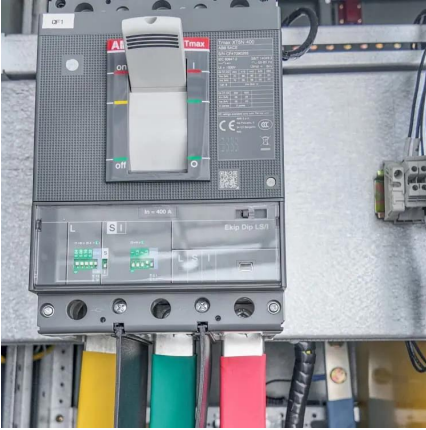
This study provided the first spatially comprehensive analysis of solar and Wind energy Complementarity on a global scale. In addition, it showed which regions of the world have a greater degree of Complementarity between Wind and solar energy to reduce energy storage requirements.

How to measure complementarity between wind speed and radiation?

The Kendall CC, Spearman CC, and fluctuation coefficient are combined to construct a comprehensive measure of the complementarity between wind speed and radiation, which provides a reliable tool for quantitatively evaluating the complementary characteristics of wind and solar energy. 2. A copula-based wind-solar complementarity coefficient R



## What is the wind and solar complementary DNA for solar container

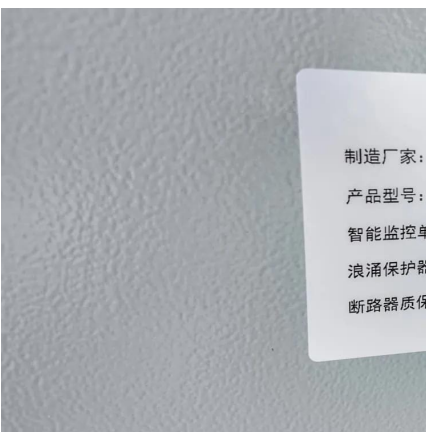


### [Research and Application of Wind-Solar Complementary ...](#)

Jan 29, 2024 · Wind-solar complementary power supply systems are used in various applications: port and navigation power supply, road and landscape lighting, video surveillance, off-grid ...

### [Communication base station wind and solar ...](#)

Nov 27, 2025 · The wind-solar-diesel hybrid power supply system of the communication base station is composed of a wind turbine, a solar cell module, an integrated controller for hybrid ...



### [What is the use of wind and solar complementary edf for ...](#)

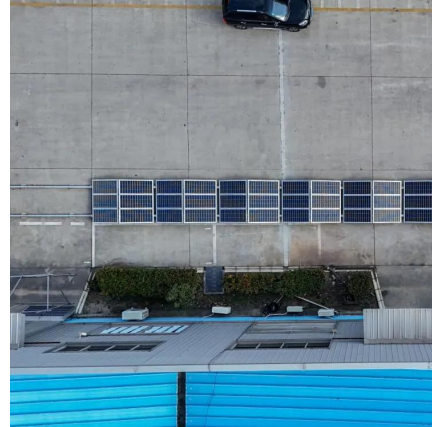
Oct 22, 2025 · In contrast, the 5th, 7th, 8th, and 10th clusters of photovoltaic stations similarly demonstrate poor complementarity with the wind speed of wind power stations. What is wind ...

### [What are the wind and solar complementary equipment ...](#)

Nov 5, 2025 · What are the wind and solar complementary equipment for network Photoelectrical complementary portable base station for communication Description technical



field [0001] The ...



### [Communication base station wind and solar complementary communication](#)

How to make wind solar hybrid systems for telecom stations? Realizing an all-weather power supply for communication base stations improves signal facilities' stability and sustainability. ...



### [Design of a Wind-Solar Complementary Power Generation ...](#)

Apr 27, 2025 · In order to improve the utilization efficiency of wind and photovoltaic energy resources, this paper designs a set of wind and solar complementary power generation ...



### [A copula-based wind-solar complementarity coefficient: ...](#)

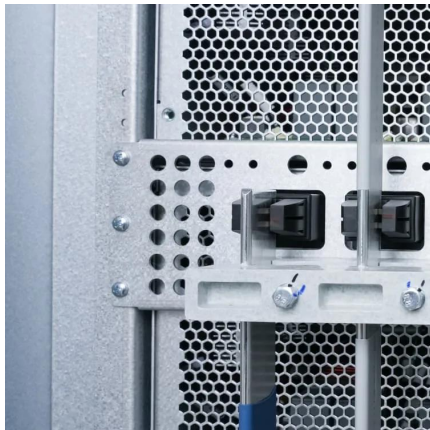
Mar 1, 2025 · A measure of wind-solar complementarity coefficient  $R$  is proposed in this paper. Utilizes the copula function to settle the Spearman and Kendall correlation coefficients ...





### [Matching Optimization of Wind-Solar Complementary Power ...](#)

Sep 23, 2024 · The intermittency, randomness and volatility of wind power and photovoltaic power generation bring trouble to power system planning. The capacity configuration of integrated ...



### [Review of mapping analysis and complementarity between solar and wind](#)

Nov 15, 2023 · This review aims to identify the available methodologies, data, and techniques for mapping the potential of solar and wind energy and its complementar...

### [An in-depth study of the principles and technologies of wind-solar](#)

Jul 26, 2024 · Through the analysis of technological innovation and system optimization strategies, this study explores ways to enhance system performance and economy by relying ...



## Contact Us

---

For catalog requests, pricing, or partnerships, please visit:  
<https://llsolarenergy.co.za>



## Scan QR Code for More Information



<https://llsolarenergy.co.za>