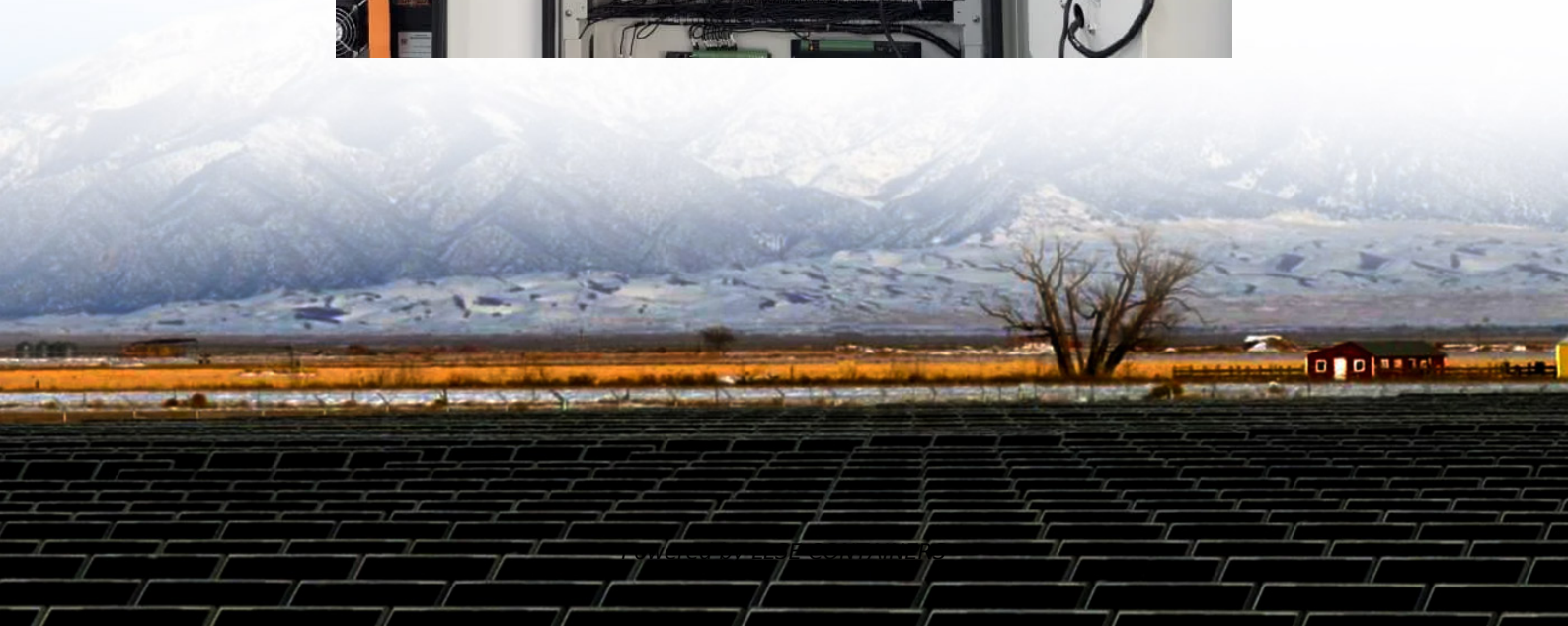


# What is the speed of the flywheel energy storage





## Overview

---

High-speed flywheels- made from composite materials like carbon fiber and fiberglass, typically operate at speeds between 20,000 and 60,000 revolutions per minute (RPM) and can store energy for a few seconds to a few minutes. How does a flywheel energy storage system work?

Flywheel Energy Storage Systems (FESS) rely on a mechanical working principle: An electric motor is used to spin a rotor of high inertia up to 20,000-50,000 rpm. Electrical energy is thus converted to kinetic energy for storage. For discharging, the motor acts as a generator, braking the rotor to produce electricity.

What limits the energy storage capacity of a flywheel energy storage system?

Additionally, the energy storage capacity of a flywheel energy storage system is limited by the maximum rotational speed of the rotor and the maximum allowable stresses on the rotor materials.

What is a flywheel energy storage system (fess)?

Flywheel energy storage systems (FESS) use electric energy input which is stored in the form of kinetic energy. Kinetic energy can be described as “energy of motion,” in this case the motion of a spinning mass, called a rotor. The rotor spins in a nearly frictionless enclosure.

Are flywheel energy storage systems safe?

Limited Energy Storage Capacity: Flywheel energy storage systems have limited energy storage capacity, and they are best suited for short-term energy storage applications. Risk of Mechanical Failure: The high rotational speeds of the flywheel rotor mean that there is a risk of mechanical failure if the rotor is not properly contained.



## What is the speed of the flywheel energy storage



### [Flywheel Energy Storage Systems and their Applications: ...](#)

Oct 19, 2024 · Flywheel energy storage systems have gained increased popularity as a method of environmentally friendly energy storage. Fly wheels store energy in mechanical rotational ...

### [Flywheel Energy Storage System](#)

Flywheel Energy Storage Systems (FESS) are defined as systems that store energy by spinning a rotor at high speeds, converting the rotor's rotational energy into electricity. They utilize a high ...



### [The High-speed Flywheel Energy Storage System](#)

Sep 25, 2018 · 2. Electromechanical energy storage using a flywheel A flywheel energy storage system converts electrical energy supplied from DC or three-phase AC power source into ...

### [Overview of Flywheel Systems for Renewable Energy ...](#)

Jan 9, 2025 · Energy can be stored through various forms, such as ultra-capacitors, electrochemical batteries, kinetic flywheels, hydro-electric power or compressed air. Their ...



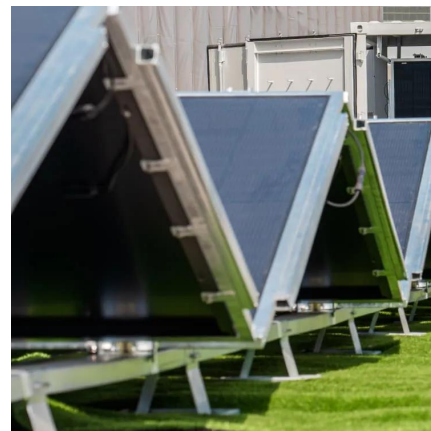
### FESS Fkywheel Energy Storage Systems

Feb 14, 2025 · Energy and Minerals  
A rotating mass, ideally spinning in a vacuum. . As frictionless a rotation point as possible, Power is stored by rotating the mass of the flywheel; Power is ...



### Flywheel Energy Storage System , SpringerLink

Sep 4, 2025 · Flywheel energy storage stores electrical energy in the form of mechanical energy in a high-speed rotating rotor. The core technology is the rotor material, support bearing, and ...



### What is the standby speed of the flywheel energy storage?

Sep 13, 2024 · 4. Operating at standby speed enables flywheels to provide reliable energy storage solutions, ensuring stability and grid resilience. The effective management of standby ...





## [Flywheel energy storage explained](#)

Flywheel energy storage (FES) works by accelerating a rotor (flywheel) to a very high speed and maintaining the energy in the system as rotational energy. When energy is extracted from the ...



## **Flywheel Energy Storage**

4 days ago · Flywheel energy storage stores kinetic energy by spinning a rotor at high speeds, offering rapid energy release, enhancing grid stability, supporting renewables, and reducing ...

## [Flywheel Energy Storage Systems \(FESS\)](#)

Most modern high-speed flywheel energy storage systems consist of a massive rotating cylinder (a rim attached to a shaft) that is supported on a stator - the stationary part of an electric ...



## [Technology: Flywheel Energy Storage](#)

Oct 30, 2024 · Summary of the storage process  
Flywheel Energy Storage Systems (FESS) rely on a mechanical working principle: An electric motor is used to spin a rotor of high inertia up to ...



## Contact Us

---

For catalog requests, pricing, or partnerships, please visit:  
<https://llsolarenergy.co.za>

### Scan QR Code for More Information



<https://llsolarenergy.co.za>