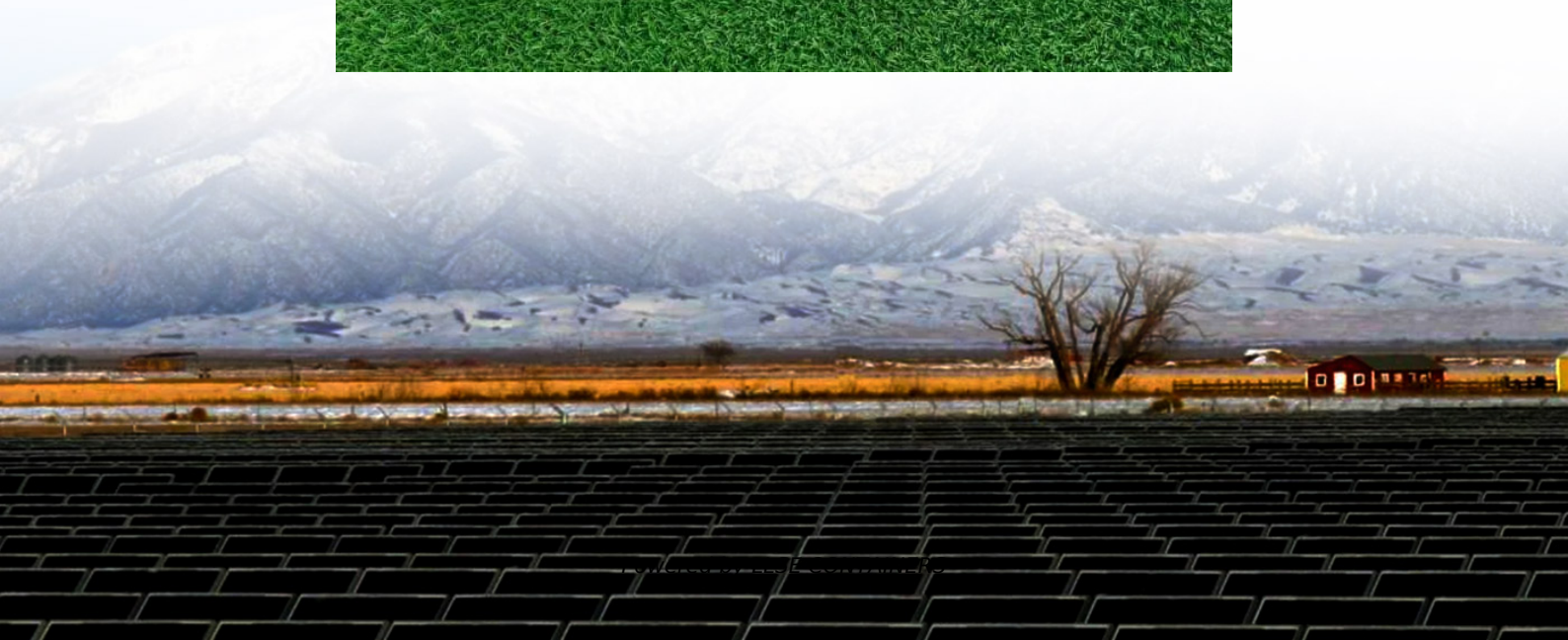


# **What is the maximum power storage power supply**





## Overview

---

What is power capacity?

Definition: Power capacity refers to the maximum rate at which an energy storage system can deliver or absorb energy at a given moment. • Units: Measured in kilowatts (kW) or megawatts (MW). • Significance: Determines the system's ability to meet instantaneous power demands and respond quickly to fluctuations in energy usage.

What is the difference between a high power capacity & energy capacity?

For instance, a high power capacity is vital for grid frequency regulation, while high energy capacity is crucial for renewable energy integration. • Power Capacity: 500 kW means it can deliver up to 500 kilowatts instantly. • Energy Capacity: 2 MWh allows it to provide power for up to 4 hours at 500 kW (since  $2 \text{ MWh} \div 500 \text{ kW} = 4 \text{ hours}$ ).

What is energy capacity?

Significance: Determines the system's ability to meet instantaneous power demands and respond quickly to fluctuations in energy usage. • Definition: Energy capacity is the total amount of energy that an energy storage system can store or deliver over time. • Units: Measured in kilowatt-hours (kWh) or megawatt-hours (MWh).

Why is energy storage important?

Energy storage is a crucial technology for the integration of intermittent energy sources such as wind and solar and to ensure that there is enough energy available during high demand



## What is the maximum power storage power supply

---



### [The Best of the BESS: The Role of Battery Energy Storage ...](#)

Oct 24, 2025 · In an era of rapid technological advancement and increasing reliance on renewable energy, battery energy storage systems (BESS) are emerging as pivotal players in ...

### [Understanding Power and Energy Capacity in ...](#)

Aug 8, 2024 · Discover the key differences between power capacity and energy capacity in battery storage systems. Learn how these metrics ...



### [WHAT IS THE MAXIMUM CHARGEABLE DISCHARGEABLE POWER OF ENERGY STORAGE](#)

What is an energy storage system? An energy storage system (ESS) for electricity generation uses electricity (or some other energy source, such as solar-thermal energy) to charge an ...



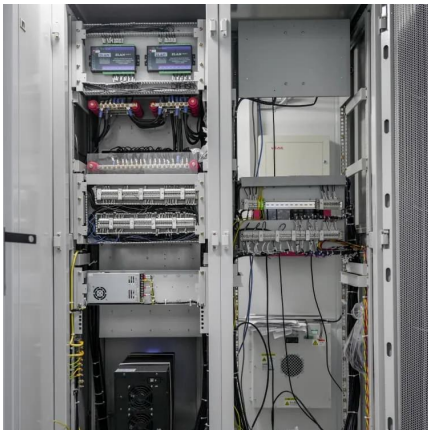
### [What is the maximum energy storage power ...](#)

Sep 18, 2024 · The maximum energy storage power supply refers to systems that can deliver vast amounts of energy. These systems are crucial for ...



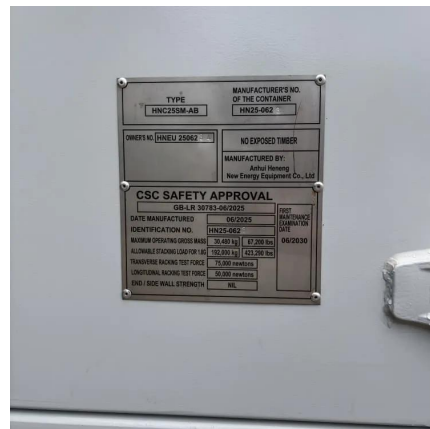
### [BESS Energy Storage Specs: Performance, Efficiency & Lifespan](#)

Learn essential BESS specifications, including power rating, DoD, round-trip efficiency, and cycle life to optimize performance and ensure long-term reliability.



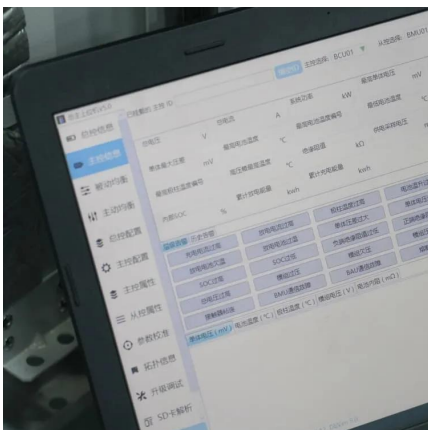
### [Amount of capacitance on the power supply's output](#)

Dec 2, 2025 · Magna-Power manufactures high-power programmable DC power supplies and electronic loads, combining robust power processing topologies with state-of-the-art vertically ...



### [Uninterruptible Power Supply Basics . Tech](#)

Jun 17, 2025 · Uninterruptible Power Supply (UPS) Basic: Power-Delivery Methods, Capacity Ranges, and How to Select the Right System. UPS ...





## Power Storage

Power storage is defined as the capability to store energy for varying durations, such as daily, weekly, or monthly, to balance energy supply and demand fluctuations, particularly in systems ...



### [Understanding Energy Storage: Power Capacity vs. Energy ...](#)

Sep 16, 2024 · Discover the key differences between power and energy capacity, the relationship between Ah and Wh, and the distinctions between kVA and kW in energy storage systems.

### [10.2 Key Metrics and Definitions for Energy ...](#)

Sometimes you will see capacity of storage specified in units of power (watt and its multiples) and time (hours). For example: 60 MW battery system ...



### [BESS Energy Storage Specs: Performance, ...](#)

Learn essential BESS specifications, including power rating, DoD, round-trip efficiency, and cycle life to optimize performance and ensure long-term ...



### [What is the maximum energy storage power supply?](#)

Apr 30, 2024 · The maximum energy storage power supply refers to the highest capacity system designed for storing and supplying energy, primarily characterized by 1. Total energy capacity ...



### [Understanding Power Storage Installed Capacity: Key ...](#)

Mar 2, 2025 · What Exactly Is Power Storage Installed Capacity? Let's start with the basics: power storage installed capacity refers to the maximum amount of electricity a system can ...



### [Grid-Scale Battery Storage: Frequently Asked Questions](#)

Jul 11, 2023 · What is grid-scale battery storage? Battery storage is a technology that enables power system operators and utilities to store energy for later use. A battery energy storage ...



### [What is the maximum power output of a wall](#)

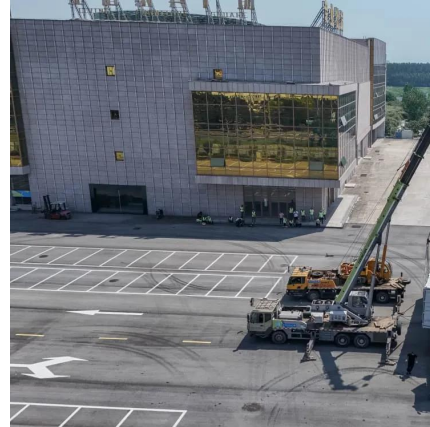
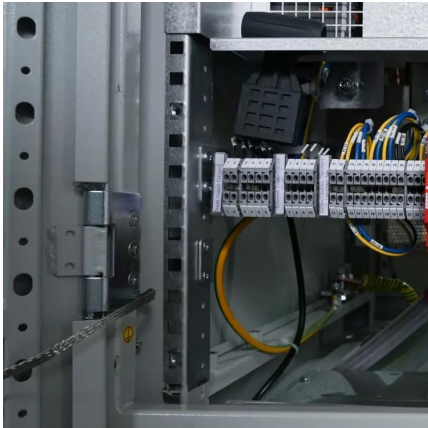
Oct 18, 2025 · What is the Maximum Power Output of a Wall - Mounted ESS? As a supplier of Wall Mounted Energy Storage Systems (ESS), I've encountered numerous inquiries regarding ...





## Electrical Energy Storage

4 days ago · Leveraging a two-way flow of electricity from EV battery storage to balance power supply and demand could also help global efforts to integrate more renewables in the power ...



### [What is the maximum energy storage power supply?](#)

Sep 18, 2024 · The maximum energy storage power supply refers to systems that can deliver vast amounts of energy. These systems are crucial for managing electricity demand, stabilizing the ...

## Electrical Energy Storage

4 days ago · Leveraging a two-way flow of electricity from EV battery storage to balance power supply and demand could also help global efforts to ...



### [Comprehensive review of energy storage systems...](#)

Jul 1, 2024 · The applications of energy storage systems have been reviewed in the last section of this paper including general applications, energy utility applications, renewable energy ...





### [What is the maximum energy storage of a ...](#)

Mar 8, 2024 · The maximum energy storage of a capacitor depends on its capacitance and the voltage across it. 1. The formula for calculating ...



### [PowerEdge: Power Settings , Dell US](#)

4 days ago · Disabling PSU redundancy allows the server to draw from additional power supplies, thus increasing the maximum amount of power that can be supplied to the server.

### **Powerwall 3 Datasheet**

Apr 24, 2025 · Powerwall 3 Power Everything  
Powerwall 3 is a fully integrated solar and battery system, designed to accelerate the transition to sustainable energy. Customers can receive ...



### [Data Sheet Intricacies-- Absolute Maximum ...](#)

Dec 1, 2011 · It allows the input voltage to go as far as 25 V above and below the power supply without damaging the part. Maximum differential input ...



## 10.2 Key Metrics and Definitions for Energy Storage

Sometimes you will see capacity of storage specified in units of power (watt and its multiples) and time (hours). For example: 60 MW battery system with 4 hours of storage. What does it mean? ...



## Contact Us

---

For catalog requests, pricing, or partnerships, please visit:  
<https://llsolarenergy.co.za>

## Scan QR Code for More Information



<https://llsolarenergy.co.za>