

# **What is the current direction of the battery cabinet**





## Overview

---

What is the direction of electric current in a battery?

The direction of electric current is in the direction of movement of positive charge. Thus, the current in the external circuit flow from the positive terminal to the negative terminal of the battery. And, electrons move through the conductor in the opposite direction.

Does current flow in the same direction inside a battery?

However, this conventional wisdom has led to a common misconception: that the current flows in the same direction inside the battery as it does outside the battery. In other words, many people assume that the current flows from the negative terminal to the positive terminal both inside and outside the battery. But is this really the case?

.

Does the current flow backwards inside a battery?

During the discharge of a battery, the current in the circuit flows from the positive to the negative electrode. According to Ohm's law, this means that the current is proportional to the electric field, which says that current flows from a positive to negative electric potential.

What is the direction of electric current in a circuit?

The direction of electric current is from the positive terminal to the negative terminal of a source (conventional current), while electrons flow in the opposite direction. The direction of electric current may be a bit confusing, and its understanding is a must to know the flow of electric current in a circuit.



## What is the current direction of the battery cabinet

---



### [Battery Current: AC or DC, Current Limitation and How Current ...](#)

3 days ago · When a battery produces current, it pushes electrons in a single, consistent direction--because all chemical batteries output DC current, not AC. The flow may sound ...

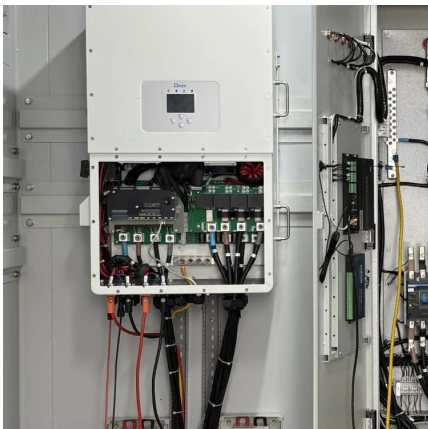
### [Which Direction Does A Car Battery'S Current Flow?](#)

May 29, 2025 · The current flows from the battery in one direction via its positive terminal and back to it via its negative terminal, also known as its earth terminal, because it is earthed to the ...



### [What is the direction of current flow in a Battery and why?](#)

May 31, 2024 · Conventional current is always opposite to the flow of electron flow Now from a battery current (conventional) flows right from positive polarity to the negative polarity.



### [Does the Current Flow Backwards Inside a Battery?](#)

Nov 25, 2015 · During the discharge of a battery, the current in the circuit flows from the positive to the negative electrode. According to Ohm's law, this means that the current is proportional ...



### Direction of Electric Current , Explained with ...

The direction of electric current is in the direction of movement of positive charge. Thus, the current in the external circuit flow from the positive ...



### Direction of Electric Current , Explained with Diagram

The direction of electric current is in the direction of movement of positive charge. Thus, the current in the external circuit flow from the positive terminal to the negative terminal of the battery.



### Inside battery current direction

Apr 22, 2025 · Solution For Inside battery current direction  
Concepts Current flow, Battery operation, Conventional current direction  
Explanation In a battery, the flow of current is defined ...





### The direction of battery current flow

What are some important aspects of battery Flow? Important aspects of battery flow include current direction, short-circuits, and safety protocols. Current Direction: Batteries operate using ...



### Re: Which direction does current flow?

Nov 11, 2011 · Before a lot was known about electrons it was thought that current flows out of the positive terminal of the battery, through the external circuit components, and back into the ...

### **homework and exercises**

Sep 17, 2016 · 1 I have found that current always is from high voltage end of resistor to the low voltage end. But in battery sometimes it flows from + end of battery to - and mostly from - to +. ...



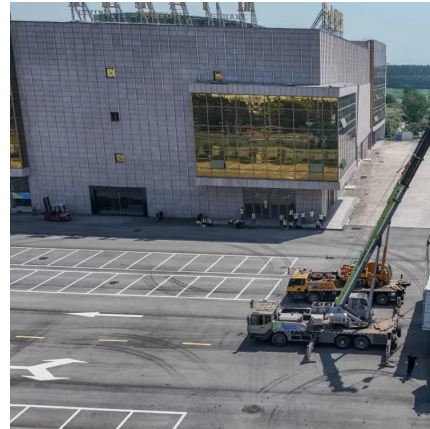
### The Mysterious Case of Battery Current: Does it Really Flow ...

Apr 3, 2025 · The Implications of Reversed Current Flow The fact that current flows in the opposite direction inside a battery compared to outside has some interesting implications: ...



### Which Direction Does A Car Battery'S Current ...

May 29, 2025 · The current flows from the battery in one direction via its positive terminal and back to it via its negative terminal, also known as its ...



### Does the Current Flow Backwards Inside a ...

Nov 25, 2015 · During the discharge of a battery, the current in the circuit flows from the positive to the negative electrode. According to Ohm's law, ...

## Contact Us

---

For catalog requests, pricing, or partnerships, please visit:  
<https://llsolarenergy.co.za>

**Scan QR Code for More Information**



<https://llolarenergy.co.za>