

What is the battery connected to the base station





Overview

How does a base battery work?

This process is called grid-balancing. Base batteries deploy energy to the grid faster than any other service, which is how Base is able to recoup the cost of the battery equipment and keep prices low for homeowners. The charge level of your Base battery will naturally fluctuate over time, rising and falling throughout a multi-day cycle.

Which battery is best for telecom base station backup power?

Among various battery technologies, Lithium Iron Phosphate (LiFePO₄) batteries stand out as the ideal choice for telecom base station backup power due to their high safety, long lifespan, and excellent thermal stability.

What is a base battery system?

The Base battery system is built for performance and reliability. It combines a high-capacity lithium iron battery with intelligent software to optimize energy use. The Base battery system has three main components: the battery pack, inverter, and hub. The long white unit is the battery pack. We mount the battery pack on the ground.

Do base batteries run in two directions?

Base batteries run in two directions, which is how Base is able to keep costs low for homeowners. The batteries charge during off-peak hours, like midday and late at night, when energy is more available and demand is low.



What is the battery connected to the base station



[How about base station energy storage ...](#)

Apr 7, 2024 · This section delves into the different types of batteries commonly used in base station energy storage and evaluates their ...

[Ultimate Guide to Base Station Power Selection: Lithium vs.](#)

Nov 17, 2025 · With the large-scale rollout of 5G networks and the rapid deployment of edge-computing base stations, the core requirements for base station power systems --stability, ...



[Basic components of a 5G base station](#)

Download scientific diagram , Basic components of a 5G base station from publication: Evaluating the Dispatchable Capacity of Base Station Backup ...

[What is the purpose of batteries at telecom ...](#)

Nov 7, 2025 · Among the many types of batteries, why can lead-acid batteries become the first choice for telecom base stations? This is mainly ...



[What is the purpose of batteries at telecom base stations?](#)

Nov 7, 2025 · Among the many types of batteries, why can lead-acid batteries become the first choice for telecom base stations? This is mainly due to its following advantages: High ...



[Telecom Battery Backup System, Sunwoda Energy](#)

A telecom battery backup system is a comprehensive portfolio of energy storage batteries used as backup power for base stations to ensure a reliable and stable power supply.



[How much energy storage battery is used in base stations?](#)

Aug 25, 2024 · These batteries enable base stations to operate efficiently, particularly when coupled with solar or wind energy systems. As the demand for connectivity rises, the efficiency ...





[Telecom Base Station Backup Power Solution: ...](#)

Jun 5, 2025 · Discover the 48V 100Ah LiFePO4 battery pack for telecom base stations: safe, long-lasting, and eco-friendly. Optimize reliability with ...

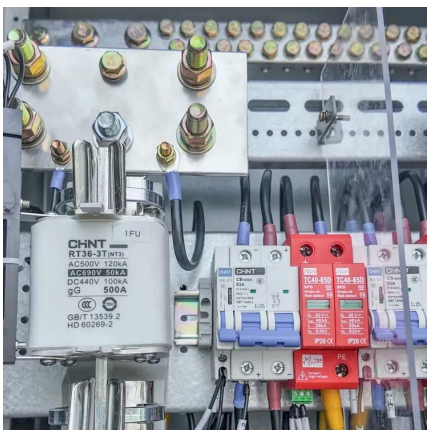


[Overview of Telecom Base Station Batteries](#)

Definition Telecom base station battery is a kind of energy storage equipment dedicatedly designed to provide backup power for telecom base stations, ...

[What Is a Base Station? Exploring the Core of 5G Networks...](#)

Aug 19, 2025 · Base stations are the core of mobile communication, and with the rise of 5G, thermal and energy challenges are increasing. This article explains the definition, structure, ...



[How the Base battery works: A complete guide to grid...](#)

2 days ago · Learn how Base's home battery system works, from grid connectivity to outage protection. Discover how our intelligent software optimizes your home's energy use and ...



[Overview of Telecom Base Station Batteries](#)

Definition Telecom base station battery is a kind of energy storage equipment dedicatedly designed to provide backup power for telecom base stations, applied to supply continuous and ...

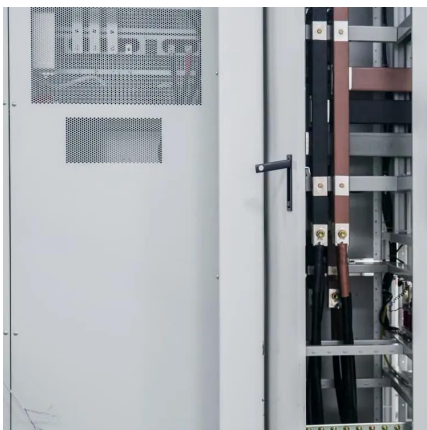


[Telecom Base Station Backup Power Solution: Design Guide ...](#)

Jun 5, 2025 · Discover the 48V 100Ah LiFePO4 battery pack for telecom base stations: safe, long-lasting, and eco-friendly. Optimize reliability with our design guide.

[How about base station energy storage batteries . NenPower](#)

Apr 7, 2024 · This section delves into the different types of batteries commonly used in base station energy storage and evaluates their respective strengths and weaknesses. Lithium-ion ...



[Basic components of a 5G base station](#)

Download scientific diagram , Basic components of a 5G base station from publication: Evaluating the Dispatchable Capacity of Base Station Backup Batteries in Distribution Networks , Cellular ...



[How the Base battery works: A complete ...](#)

2 days ago · Learn how Base's home battery system works, from grid connectivity to outage protection. Discover how our intelligent software ...



Contact Us

For catalog requests, pricing, or partnerships, please visit:
<https://llsolarenergy.co.za>

Scan QR Code for More Information



<https://llsolarenergy.co.za>