

# **What is the base station power control device**





## Overview

---

What is a base station controller?

Base station controllers (BSCs) are integral to the mobile telecommunications infrastructure, providing essential management and control functions that ensure efficient network operation. They handle the allocation of radio channels, which is crucial for reducing interference and optimising the use of available spectrum.

What is a base station controller (BSC)?

In today's world of mobile communication, the Base Station Controller (BSC) plays a key role in ensuring your phone calls and data transfer happen smoothly. The BSC is a vital part of the network infrastructure that supports wireless communication by connecting and managing multiple base stations within the mobile network.

What is base station Power?

Base station power refers to the output power level of base stations, which is defined by specific maximum limits (24 dBm for Local Area base stations and 20 dBm for Home base stations) and includes tolerances for deviation from declared power levels, as well as specifications for total power control dynamic range. How useful is this definition?

.

What is a base station power cabinet?

The base station power cabinet is a key equipment ensuring continuous power supply to base station devices, with LLVD (Load Low Voltage Disconnect) and BLVD (Battery Low Voltage Disconnect) being two important protection mechanisms in the power cabinet.



## What is the base station power control device

---



### [BSC \(base station controller\)](#)

Mar 4, 2023 · Base Station Interface Unit (BIU):  
The BIU provides the interface between the BSC and the BTS. It converts the digital signals from the MPU into analog signals that are ...

### [Base station power control strategy in ultra-dense networks ...](#)

Aug 1, 2025 · This paper presents a method based on DRL for power allocation and base station sleep that jointly optimizes the system EE and SE and gives the terminals the appropriate task ...



### [What is Base Station Controller? A Simple Guide for Everyone](#)

Aug 19, 2025 · Power control is another key function, as the BSC adjusts signal strength to maintain optimal quality without wasting energy or causing unnecessary interference. Effective ...

### [Understanding Base Station Controller Architecture: A ...](#)

Oct 3, 2024 · Base station controller architecture plays a crucial role in the functioning of mobile networks, serving as the intermediary between mobile devices and the core network. It ...



### [Base Station Controller \(BSC\)](#)

Oct 4, 2025 · A Base Station Controller (BSC) is a network component in a cellular network that is responsible for controlling one or more base transceiver stations (BTSs). The BSC is ...



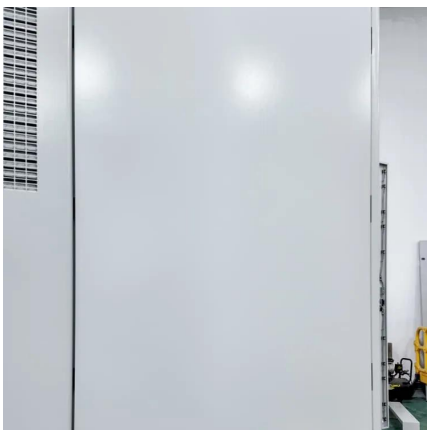
### **Base Station Controller**

A Base Station controller (BSC) is a telecommunication network component responsible for the control of one or more Base Transceiver Stations (BTS). The BSC controls the activities of the ...



### [LLVD & BLVD in Base Station Power Cabinets](#)

1 day ago · LLVD and BLVD Protection in Base Station Power Cabinets Introduction In modern communication networks, base stations, as core ...





[LLVD & BLVD in Base Station Power Cabinets](#)

1 day ago · LLVD and BLVD Protection in Base Station Power Cabinets Introduction In modern communication networks, base stations, as core infrastructure, are crucial for stable operation. ...

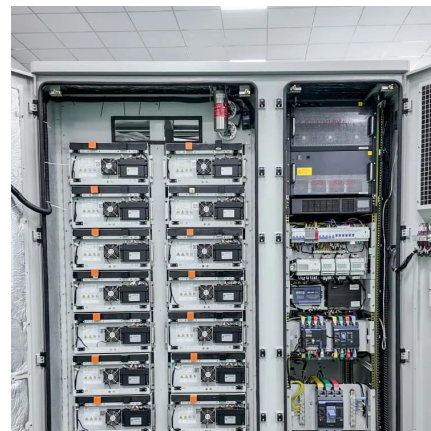


**Power Base Station**

The transmitter characteristics define RF requirements for the wanted signal transmitted from the UE and base station, but also for the unavoidable unwanted emissions outside the transmitted ...

[BSC \(base station controller\)](#)

Mar 4, 2023 · Base Station Interface Unit (BIU): The BIU provides the interface between the BSC and the BTS. It converts the digital signals ...



[What Is Base Station Controller \(BSC\)?](#)

Jul 24, 2025 · We've all heard the term "Base Station Controller (BSC)" before, but do you know what it does? A base station controller is a critical mobile network component that controls one ...



## Discrete

Introduction In wireless base stations, the power amplifier (PA) dominates signal-chain performance in terms of power dissipation, linearity, efficiency, and cost. Monitoring and ...



## Contact Us

---

For catalog requests, pricing, or partnerships, please visit:  
<https://llsolarenergy.co.za>

## Scan QR Code for More Information



<https://llsolarenergy.co.za>