

What is a single-phase inverter





Overview

What is single phase inverter?

As the name says it all, a single-phase inverter connection has a single-phase power load and alternative switches to counterbalance them. There are two types of single-phase inverters – half-bridge inverter and full-bridge inverter. Now that you know what is single phase inverter, you must also know its types, which include:.

What is the difference between a single phase and three phase inverter?

Single-phase inverters are suitable for powering common household appliances, electronics, and lighting. Three-phase inverters: In contrast, a three-phase inverter generates three sinusoidal AC waveforms, each out of phase with the others by 120 degrees.

Are split phase solar inverters the same as two phase inverter?

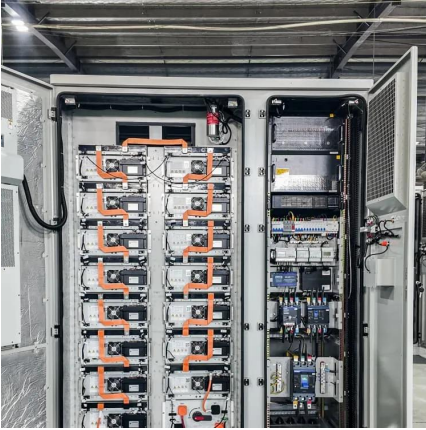
" Split phase Solar Inverter is the same as two phase inverter": Nope, they're not the same! Split phase inverters use a single power source to deliver two 120V outputs that are 180 degrees out of phase. Two-phase, on the other hand, is a totally different system with separate power sources, and it's rarely used today.

What is a single phase full bridge inverter?

The power circuit of a single phase full bridge inverter is constructed with precision, featuring four thyristors labeled T1 to T4 , four diodes D1 to D4 and a two wire DC input power source denoted as V_s .



What is a single-phase inverter



[Single-Phase Inverter - Electricity - Magnetism](#)

Oct 26, 2023 · A single-phase inverter operates by converting a DC input, often sourced from a battery or a fuel cell, into an AC output. This is achieved through a process known as switching.

[Single-Phase vs Three-Phase Inverters: What's the Difference?](#)

Dec 4, 2025 · If your home is single-phase and you plan to stay under 6-8kW, a single-phase inverter is usually the easy, affordable choice. Three-Phase Inverters A three-phase inverter ...



[What is a Single Phase Output Inverter?](#)

Dec 14, 2023 · A single phase output inverter is an electronic device that converts direct current (DC) power into alternating current (AC) power with a single sinusoidal waveform. In other ...

Single Phase Inverter

Jul 23, 2025 · Single Phase Inverter A single-phase inverter is a type of inverter that converts DC source voltage into single-phase AC output voltage at a desired voltage and frequency and it ...



[Single Phase Inverter: A Complete Guide with Types & Benefits](#)

A single-phase inverter is a type of inverter that converts DC (direct current) source voltage into a single-phase AC (alternate current) output at a desired frequency and voltage.



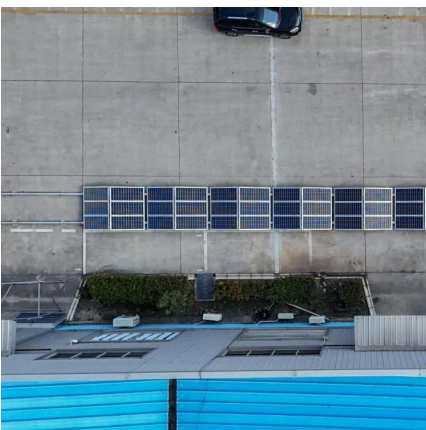
[Single Phase vs Split Phase Inverter: Key Differences Explained](#)

Nov 23, 2024 · Explore the key differences between single phase and split phase inverters in this comprehensive guide. Whether you're powering basic appliances or running heavy-duty ...



[What Is a Single Phase Inverter and How It Works?](#)

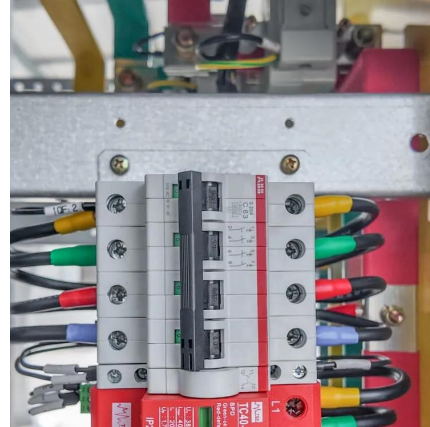
Nov 21, 2025 · A single phase inverter is a device that converts direct current (DC) electricity into alternating current (AC) electricity. This process is vital for integrating renewable energy ...





How a Single Phase Inverter Works

Oct 25, 2025 · A single-phase inverter is an electronic power conversion device that transforms direct current (DC) power into alternating current (AC) power. This conversion is necessary ...



Contact Us

For catalog requests, pricing, or partnerships, please visit:
<https://llsolarenergy.co.za>

Scan QR Code for More Information



<https://llsolarenergy.co.za>