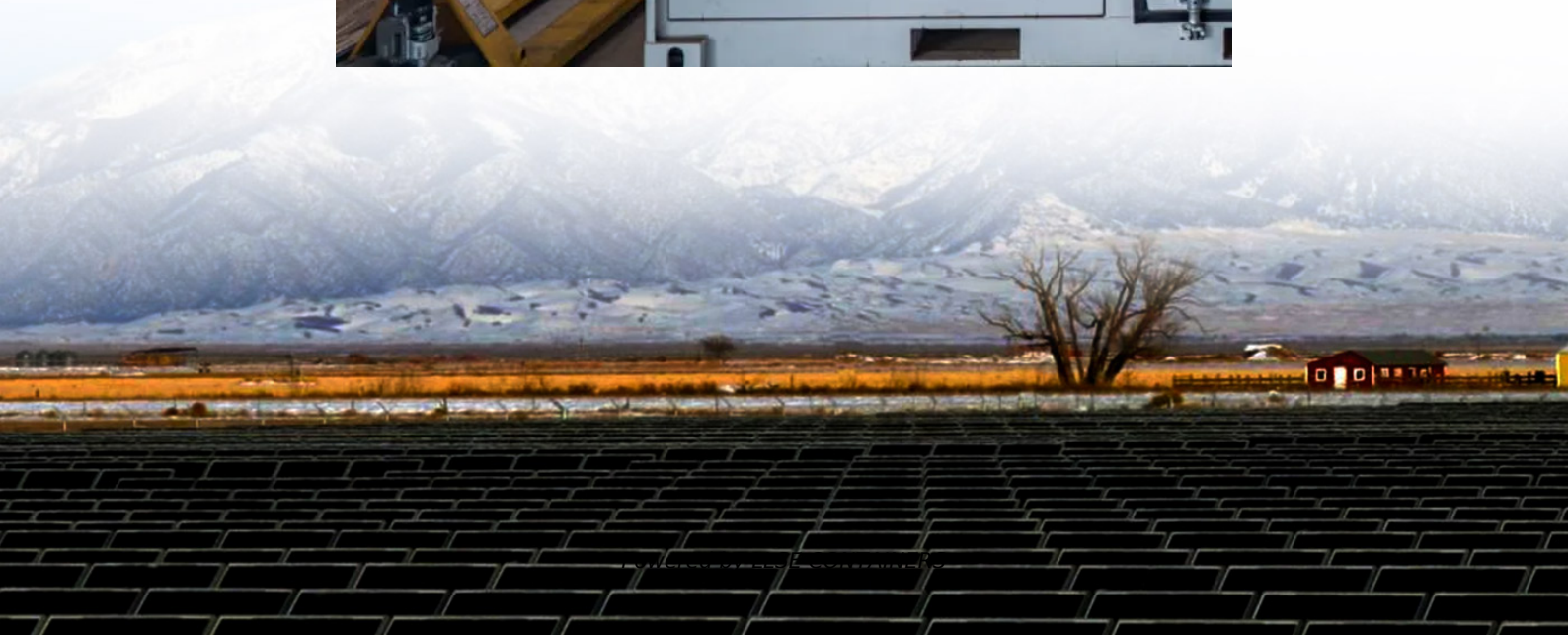


# **What is a power-dedicated base station**





## Overview

---

What is base station Power?

Base station power refers to the output power level of base stations, which is defined by specific maximum limits (24 dBm for Local Area base stations and 20 dBm for Home base stations) and includes tolerances for deviation from declared power levels, as well as specifications for total power control dynamic range. How useful is this definition?

.

How much power does a base station have?

Maximum base station power is limited to 38 dBm output power for Medium-Range base stations, 24 dBm output power for Local Area base stations, and to 20 dBm for Home base stations. This power is defined per antenna and carrier, except for home base stations, where the power over all antennas (up to four) is counted.

What is the maximum base station Power?

Maximum base station power is limited to 24 dBm output power for Local Area base stations and to 20 dBm for Home base stations, counting the power over all antennas (up to four). There is no maximum base station power defined for Wide Area base stations.

How much power does a cellular base station use?

A cellular base station can use anywhere from 1 to 5 kW power per hour depending upon the number of transceivers attached to the base station, the age of cell towers, and energy needed for air conditioning. Cellular base stations use power without any interruption and also needs maintenance.



## What is a power-dedicated base station

---

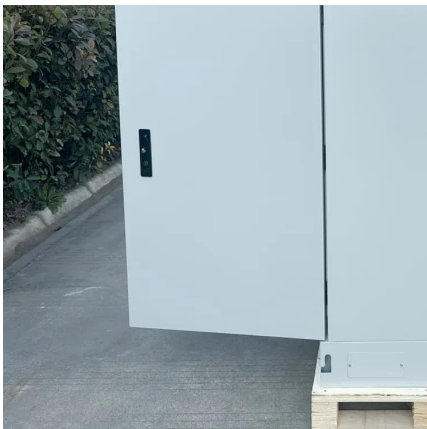


### [Power Base Stations Modular Design: Revolutionizing ...](#)

Why Traditional Infrastructure Fails Modern Networks? As 5G deployments accelerate globally, have you ever wondered why 62% of telecom operators report power base stations ...

### [Communication Base Station Smart Hybrid PV Power Supply ...](#)

The Telecom Base Station Intelligent Grid-PV Hybrid Power Supply System helps telecom operators to achieve "carbon reduction, energy saving" for telecom base stations and machine ...



### [What Does a Base Station Do and Why Is It Essential for ...](#)

Sep 5, 2025 · What Is a Base Station? A base station is a fixed point of communication between mobile devices and the wider telecom network. It transmits and receives radio signals, ...

### [A Green Base Station Dual Power Supply Strategy](#)

Apr 24, 2024 · To address the issue of how to maximize renewable power utilization, a dual power supply strategy for green base station is proposed in this article. The strategy consists of





Grid ...

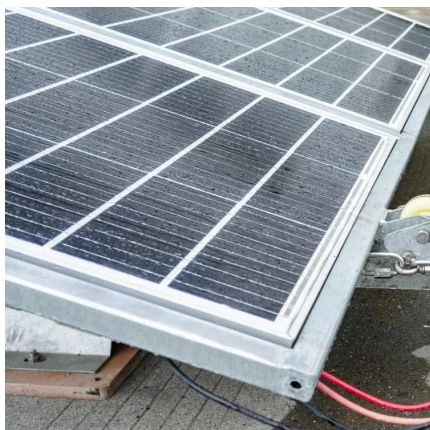


### [What are the dedicated power base stations](#)

Nov 24, 2025 · A cellular base station can use anywhere from 1 to 5 kW power per hour depending upon the number of transceivers attached to the base station, the age of cell ...

### [Joint Base Station Selection and Power Allocation Design for](#)

Apr 26, 2024 · Cell-free (CF) networks can reduce cell boundaries by densely deploying base stations (BSs) with additional hardware costs and power sources. Integrating a reconfigurable ...



### [5G macro base station power supply design strategy and ...](#)

Oct 24, 2024 · For macro base stations, Cheng Wentao of Infineon gave some suggestions on the optimization of primary and secondary power supplies. "In terms of primary power supply, we ...



## Contact Us

---

For catalog requests, pricing, or partnerships, please visit:  
<https://llsolarenergy.co.za>

### Scan QR Code for More Information



<https://llsolarenergy.co.za>