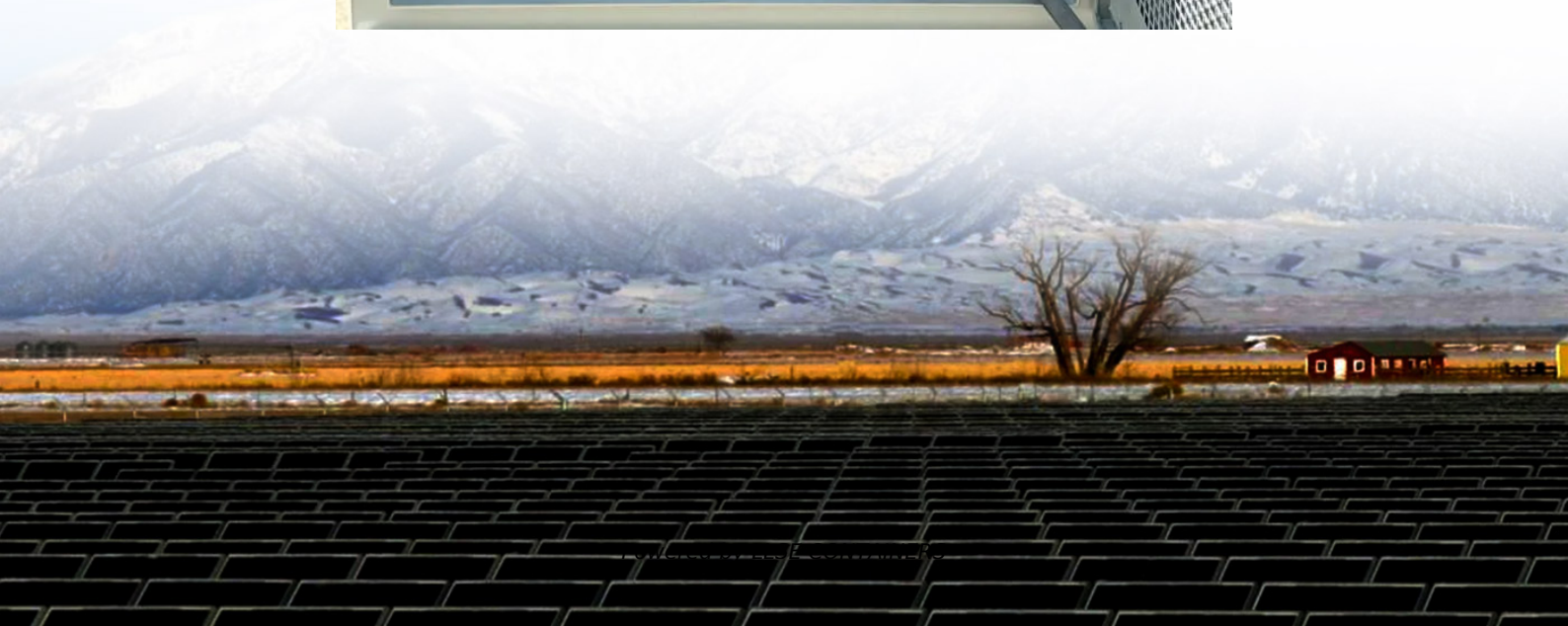


What batteries does BMS use





Overview

What is a battery management system (BMS)?

Like lead-acid batteries, lithium batteries can be permanently damaged by overcharging, deep discharging, or extreme temperatures. That's where the Battery Management System (BMS) comes in. Often called the brain of the battery, the BMS ensures your batteries operate safely, efficiently, and for as long as possible. In this guide, we'll cover:

What are the components of a battery management system (BMS)?

A typical battery management system (BMS) consists of the following main components: Battery Management Controller (BMC), Voltage and Current Sensors, Temperature Sensors, Balancing Circuit, and Power Supply Unit.

What are the different BMS architectures for a battery system?

Different battery systems call for different BMS architectures: Centralized: Single controller handles all cell data Distributed: Module-level sensors report to a central unit Modular: Smart modules manage subsets of the battery independently Sensors: Voltage, current, temperature Microcontroller (MCU): BMS "brain" for logic and data processing.

What is a BMS used for?

A Battery Management System (BMS) is widely used in various applications such as electric vehicles (EVs), energy storage systems (ESS), uninterruptible power supplies (UPS), and industrial battery applications.



What batteries does BMS use

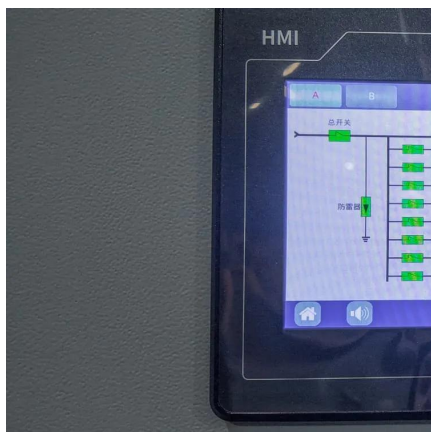


[What Is a Battery Management System ...](#)

Aug 7, 2025 · A Battery Management System (BMS) is an essential component in modern battery-powered applications, responsible for ...

[What Is a BMS? A Complete Guide to the Basic Functions ...](#)

Apr 3, 2025 · That guardian is the BMS (Battery Management System). Often called the "brain" and "protector" of modern lithium battery packs, the BMS is just as critical as the battery cells ...

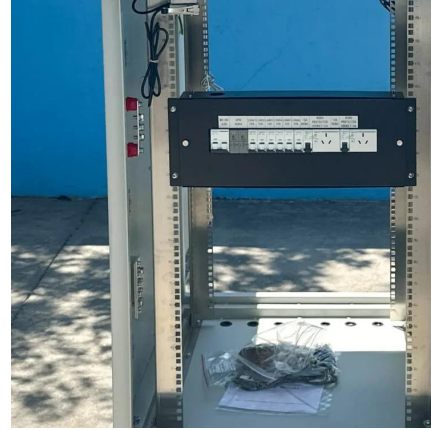


[Battery Management Systems \(BMS\): A Complete Guide](#)

Mar 6, 2025 · A Battery Management System (BMS) is essential for ensuring the safe and efficient operation of battery-powered systems. From real-time monitoring and cell balancing to thermal ...

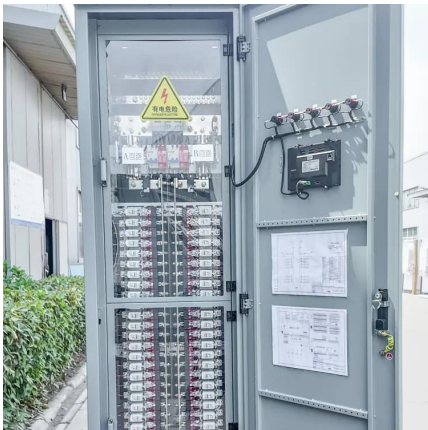
[What Is BMS \(Battery Management System\) and Why Needs ...](#)

Sep 29, 2025 · A Battery Management System (BMS) is the intelligent control unit that protects lithium batteries from overcharge, over-discharge, overheating, and short circuits. Learn how a ...



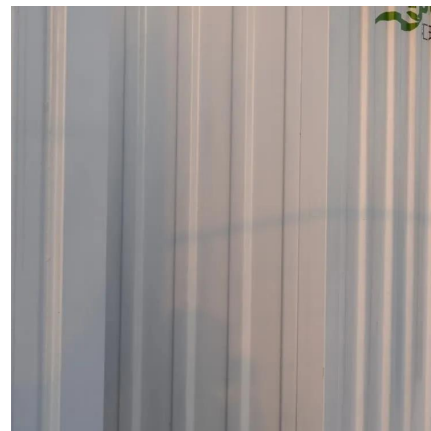
[Battery Management System \(BMS\) Detailed ...](#)

May 7, 2025 · Battery Management System (BMS) is the "intelligent manager" of modern battery packs, widely used in fields such as electric ...



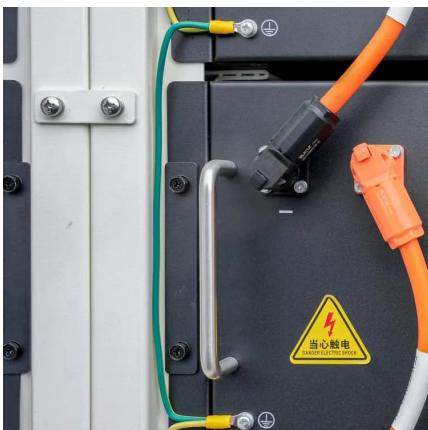
[What Is a Battery Management System \(BMS\)?](#)

Aug 7, 2025 · A Battery Management System (BMS) is an essential component in modern battery-powered applications, responsible for monitoring, protecting, and optimizing the ...



[Battery Management Systems \(BMS\): A ...](#)

Mar 6, 2025 · A Battery Management System (BMS) is essential for ensuring the safe and efficient operation of battery-powered systems. From real ...





[Understanding BMS \(Battery Management System\): The ...](#)

Nov 11, 2025 · Discover how an advanced Battery Management System (BMS) is the critical brain behind lithium-ion batteries, enhancing safety, maximizing performance, and extending ...

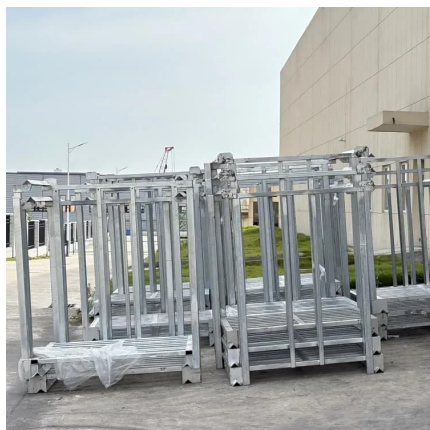


[Understanding Battery Management Systems \(BMS\): The ...](#)

1 day ago · Why is a BMS Crucial for Lithium-Ion Batteries? Lithium-ion batteries have powerful chemistry, but they require precise operation within strict voltage, temperature, and current ...

[What Is A BMS \(Battery Management System\)?](#)

Sep 29, 2025 · A battery management system is the "brain" of battery, which is critical for safety and operation. Here's a deep dive on the BMS.



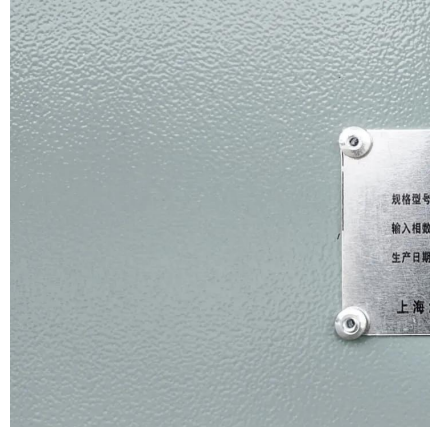
[What is a Battery Management System \(BMS\)? Essential ...](#)

May 5, 2025 · A Battery Management System (BMS) safeguards lithium-ion batteries by monitoring voltage, current, and temperature, preventing overcharge, discharge, and thermal ...



[What Is a BMS in Batteries? Definition, Functions, and ...](#)

Jun 10, 2025 · A Battery Management System (BMS) is the intelligent controller that ensures batteries are used safely, efficiently, and reliably. Whether you're an engineer, a tech ...

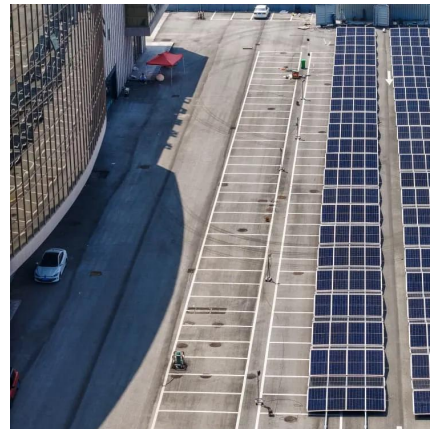


[What is a Battery Management System ...](#)

May 5, 2025 · A Battery Management System (BMS) safeguards lithium-ion batteries by monitoring voltage, current, and temperature, preventing ...

[Battery Management System \(BMS\) Detailed Explanation: ...](#)

May 7, 2025 · Battery Management System (BMS) is the "intelligent manager" of modern battery packs, widely used in fields such as electric vehicles, energy storage stations, and consumer ...



Contact Us

For catalog requests, pricing, or partnerships, please visit:
<https://ilsolarenergy.co.za>



Scan QR Code for More Information



<https://llsolarenergy.co.za>