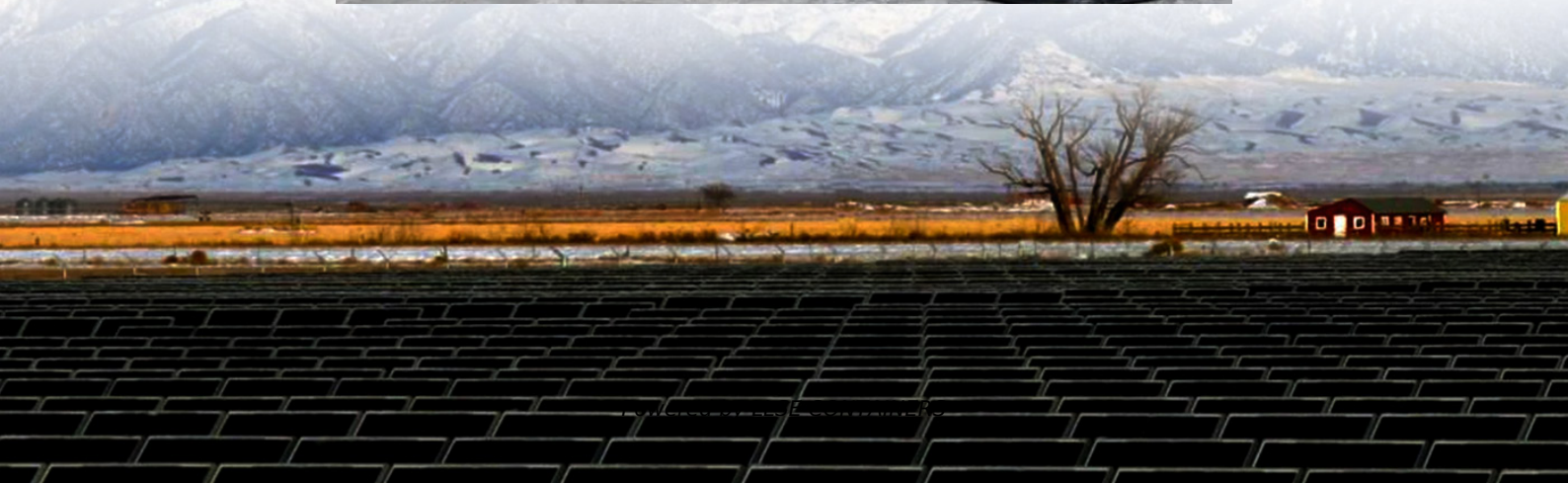


# What are the types of power station energy storage batteries





## Overview

---

What are the different types of battery energy storage systems?

Different types of Battery Energy Storage Systems (BESS) includes lithium-ion, lead-acid, flow, sodium-ion, zinc-air, nickel-cadmium and solid-state batteries. As the world shifts towards cleaner, renewable energy solutions, Battery Energy Storage Systems (BESS) are becoming an integral part of the energy landscape.

What are battery storage power stations?

Battery storage power stations are usually composed of batteries, power conversion systems (inverters), control systems and monitoring equipment. There are a variety of battery types used, including lithium-ion, lead-acid, flow cell batteries, and others, depending on factors such as energy density, cycle life, and cost.

What is a battery energy storage system?

Battery energy storage systems (BESS) are essential for renewable energy integration, grid stability, and backup power. The choice of battery chemistry impacts performance, cost, safety, and lifespan, making it crucial to select the right type for each application.

What type of batteries are used in energy storage?

Currently, the market primarily relies on lithium iron phosphate (LiFePO<sub>4</sub>) batteries. Shenzhen GSL Energy Co., Ltd. was established in 2011, specializing in residential, commercial, and industrial LiFePO<sub>4</sub> energy storage systems. GSL ENERGY offers certified LiFePO<sub>4</sub> storage energy batteries for homes, businesses, and utilities.



## What are the types of power station energy storage batteries

---

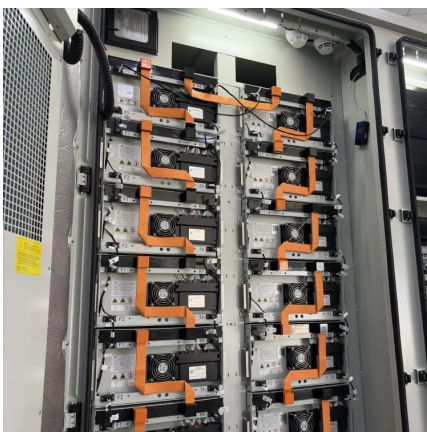


### Energy Storage Batteries

Aug 13, 2025 · As the adoption of renewable energy storage continues to grow rapidly, the demand for efficient and reliable energy storage solutions has also surged. Energy storage ...

### [9 types of battery - What Are The Best Batteries For Energy Storage?](#)

Aug 21, 2024 · This article, we will investigate the most suitable types of battery for energy storage systems and the factors that should be considered when selecting them.



### [The Best Battery Types for Energy Storage: A Guide](#)

Feb 18, 2025 · Introduction Battery energy storage systems (BESS) are essential for renewable energy integration, grid stability, and backup power. The choice of battery chemistry impacts ...

### [Stationary Energy Storage , Battery Council International](#)

Dec 4, 2025 · Stationary energy storage is critical to supporting a strong energy future - delivering the reliability, resilience, and sustainability our nation depends on. To meet diverse ...



### [What are the types of batteries for energy storage stations?](#)

Apr 13, 2024 · The future of energy storage solutions hinges upon the evolution of battery technologies. As global demands for renewable energy sources escalate, exploring diverse ...



### [Battery storage power station - a comprehensive guide](#)

1 day ago · Battery storage power stations store electrical energy in various types of batteries such as lithium-ion, lead-acid, and flow cell batteries. These facilities require efficient operation ...



### [Types of Battery Energy Storage Systems \(BESS\) Explained](#)

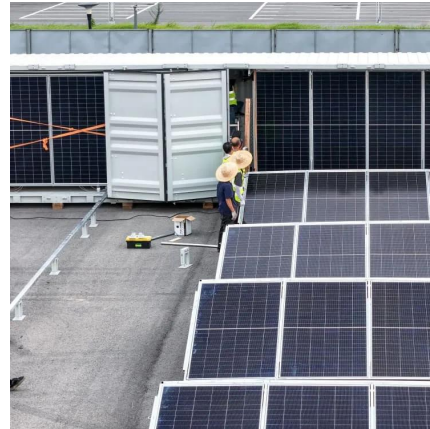
Jan 14, 2025 · Explore the main types of Battery Energy Storage Systems (BESS) including lithium-ion, lead-acid, flow, sodium-ion, and solid-state batteries, and learn how to choose the ...





### [What types of batteries are commonly used in a Battery Storage ...](#)

May 15, 2025 · Flow batteries provide deep - discharge capability and independent power and energy scaling. If you're in the market for a Battery Storage System Station, I'd love to chat ...



### [What Types of Batteries Are Used in Energy-Storage Charging Stations](#)

5 days ago · This article explains how battery technologies for charging stations have developed, compares the advantages and disadvantages of the main battery types, and highlights how ...

### [What are the types of batteries for energy storage power ...](#)

Battery storage power stations are usually composed of batteries, power conversion systems (inverters), control systems and monitoring equipment. There are a variety of battery types ...



## Contact Us

---

For catalog requests, pricing, or partnerships, please visit:  
<https://llsolarenergy.co.za>



## Scan QR Code for More Information



<https://llsolarenergy.co.za>