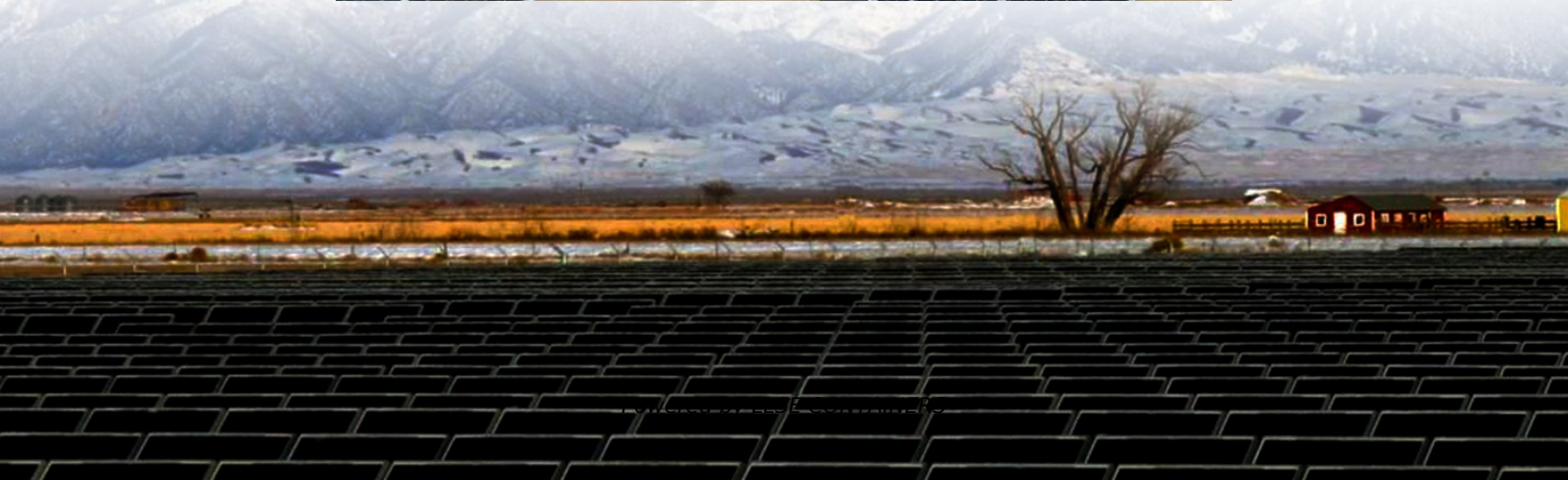


What are the requirements for grid-connected inverter installation





Overview

What is a grid connected inverter?

A grid connected inverter is a vital part of a grid-connect solar electricity system as it converts the DC current generated by solar panels to the 230 volt AC current needed to run household appliances. It is important they are manufactured in compliance with strict requirements to ensure safe operation.

What happens if an inverter is not compatible with a grid?

Updated testing methods ensure that inverters meet modern grid compatibility standards. Non-compliance with AS/NZS 4777 standards can lead to: Rejection of grid connection applications. Safety hazards, such as electrical shocks and fires. Reduced system efficiency and reliability. Fines or penalties for installers and manufacturers.

When will evoenergy update a grid-connected inverter installation requirement?

The Australian Standard AS/NZS 4777.1 (which sets the installation requirements for grid-connected inverters) has been updated and will be mandatory from 23 February 2025. To align with this, Evoenergy is updating its connection requirements for solar and battery systems.

Do you need to certify your inverter?

For homeowners, ensuring compliance provides peace of mind and guarantees the system's long-term performance. Installers must follow AS/NZS 4777.1 guidelines to ensure safe, compliant installations. Manufacturers must certify their inverters under AS/NZS 4777.2 to sell them in Australia or New Zealand.



What are the requirements for grid-connected inverter installation



[Updated Inverter Installation Rules 2025: What You Need to ...](#)

Mar 31, 2025 · The AS/NZS 4777.1 standard outlines installation requirements for grid-connected inverters in Australia and New Zealand. The 2024 revision introduces updated technical ...

[Comprehensive Guide to AS/NZS 4777.1 and ...](#)

Jun 29, 2024 · What are AS/NZS 4777.1 and AS/NZS 4777.2? AS/NZS 4777.1:2020 This standard outlines installation requirements for grid ...

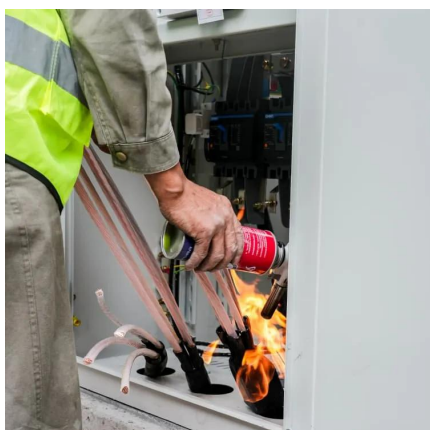


[Comprehensive Guide to AS/NZS 4777.1 and AS/NZS 4777.2 ...](#)

Jun 29, 2024 · What are AS/NZS 4777.1 and AS/NZS 4777.2? AS/NZS 4777.1:2020 This standard outlines installation requirements for grid-connected inverters. It specifies the ...

[Testing Requirements for Grid-Connected Hybrid Inverters](#)

4 days ago · This guide outlines the mandatory tests licensed electricians must perform during installation and commissioning to meet regulatory expectations and achieve a compliant hybrid ...

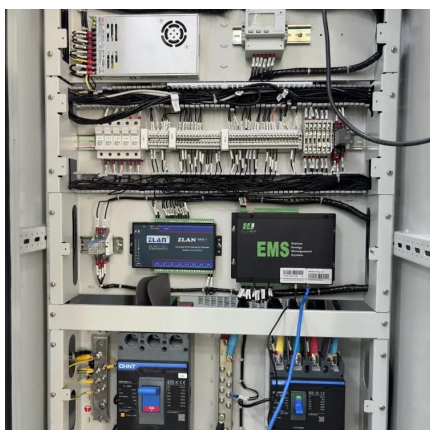


[Our Summary : AS/NZS 4777.1:2024 - Grid Connection of ...](#)

AS/NZS 4777.1: Covers the installation requirements for the inverter energy system (IES). AS/NZS 5139: Applies to battery systems from the battery through to the inverter input ...

[AS/NZS 4777.1 Update - What Installers Need to Know?](#)

AS/NZS 4777.1 Update: Discover the latest inverter rules, safety upgrades & what they mean for solar, V2G & battery systems in 2024 and beyond.



[Standard AS/NZS 4777.1 Frequently Asked Questions](#)

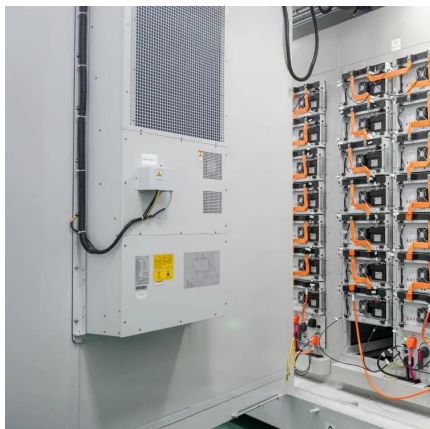
These supply types also assist in identifying when inverters are considered grid connected and are required to meet DNSP technical requirements, inverter compliance requirements and ...



[National Connection Guidelines](#)

Changes to Inverter Installation Standards In August 2024, Standards Australia released a new version of AS/NZS 4777.1 Grid connection of energy systems via inverters Part 1: Installation

...



[Our Summary : AS/NZS 4777.1:2024 - Grid ...](#)

AS/NZS 4777.1: Covers the installation requirements for the inverter energy system (IES). AS/NZS 5139: Applies to battery systems from the battery ...

[Grid Connected Inverter requirements](#)

Dec 15, 2022 · Grid Connected Inverter requirements Industry guidance: December 2021 About this guidance A grid connected inverter is a vital part of a grid-connect solar electricity system ...



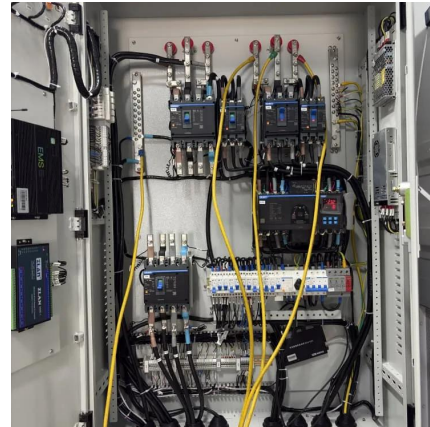
Important updates to Evoenergy's solar & battery connection requirements

The Australian Standard AS/NZS 4777.1 (which sets the installation requirements for grid-connected inverters) has been updated and will be mandatory from 23 February 2025.



TEST REPORT AS/NZS 4777.2 Grid connection of energy ...

Mar 9, 2023 · When the multiple mode inverter is operating in stand-alone mode and is disconnected from the grid, the stand-alone port shall conform to the requirements for d.c. ...



Contact Us

For catalog requests, pricing, or partnerships, please visit:
<https://llsolarenergy.co.za>

Scan QR Code for More Information



<https://llsolarenergy.co.za>