

Wellington sells energy storage





Overview

Who owns the Wellington Battery energy storage system?

AMPYR Australia has announced the acquisition of Shell Energy Australia's 50% stake in the Wellington Battery Energy Storage System (BESS) in New South Wales. This acquisition makes AMPYR the sole owner of the 1,000 megawatt-hour (MWh) project.

Who owns the Wellington Bess project?

With its Wellington BESS stage two project (100MW), Ampyr now owns 100% of the 1000MWh Wellington project. Ampyr and Shell Energy Australia had been joint venture partners in the BESS scheme (image of site) since October 2022. Ampyr is aiming for energisation of stage one in 2026, with stage two to follow in 2027.

Does ampyr own the Wellington Bess project?

Ampyr now owns 100% of the 400MW Wellington BESS project in New South Wales. Ampyr Australia has acquired Shell's 50% stake in the 300MW Wellington battery energy storage system (BESS) in New South Wales. With its Wellington BESS stage two project (100MW), Ampyr now owns 100% of the 1000MWh Wellington project.

How many GW of energy storage will Australia have by 2030?

It is worth noting that Ampyr Australia is targeting an operational portfolio of 3GW of energy storage in the country by 2030. Its Singapore-headquartered parent company, Ampyr Energy, is developing around 12GW of projects globally.



Wellington sells energy storage



[AMPYR takes control of Wellington BESS , News , IJGlobal](#)

Feb 4, 2025 · Stonepeak-backed AMPYR Australia has acquired Shell Energy Australia's 50% stake in the 300MW/600MWh Wellington battery energy storage system stage 1 project in ...

[AMPYR acquires Shell stake in 600MWh Australian BESS](#)

Feb 4, 2025 · AMPYR Australia has acquired Shell Energy Australia's 50 per cent stake in the 300 MW / 600 MWh Wellington battery energy storage system (BESS) stage one project in New ...



[Shell Offloads Oz Battery Stake](#)

Feb 4, 2025 · Ampyr Australia has acquired Shell's 50% stake in the 300MW Wellington battery energy storage system (BESS) in New South Wales. With its Wellington BESS stage two ...



[AMPYR achieves Financial Close of Wellington Stage 1 BESS](#)

2 days ago · The Wellington Stage 1 BESS is a crucial element in advancing Australia's energy storage capabilities. AMPYR is on track to deliver more than 6 GWh of energy storage projects ...

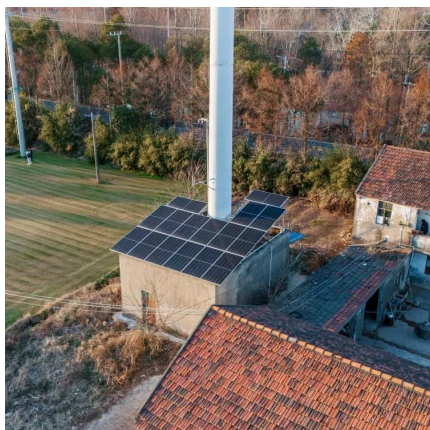


[AMPYR Australia takes full ownership of Wellington BESS ...](#)

Feb 3, 2025 · AMPYR Australia has acquired Shell Energy Australia's 50% stake in the Wellington Battery Energy Storage System (BESS) stage 1 (300 MW / 600 MWh) in New South Wales.

[2025 AMPYR Project Factsheet Wellington](#)

Apr 8, 2025 · The Wellington Battery Energy Storage System (BESS) will store excess renewable energy ready for use by homes and businesses during peak times. BESS projects play an ...



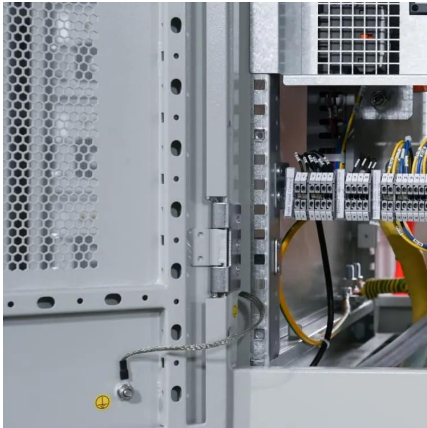
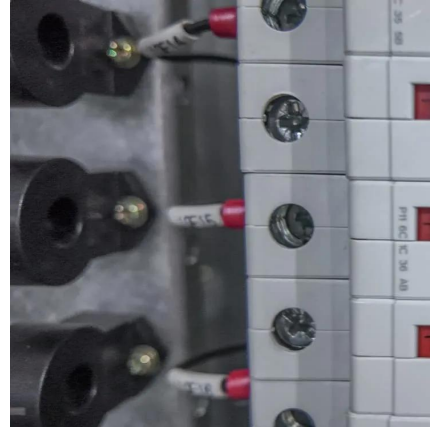
[Ampyr Energy takes control of 1 GWh big battery project](#)

Feb 4, 2025 · Ampyr Australia, the local arm of Singapore-based outfit Ampyr Energy, says it has acquired oil major Shell Energy's 50% stake in the 300 MW / 600 MWh first stage of the ...



[AMPYR Australia Acquires Full Ownership of Wellington Battery Energy](#)

Feb 7, 2025 · AMPYR Australia has announced the acquisition of Shell Energy Australia's 50% stake in the Wellington Battery Energy Storage System (BESS) in New South Wales.



[Ampyr buys Shell's equity in 1GWh BESS in New South Wales](#)

Feb 4, 2025 · The Wellington BESS will be located within the CentralWest Orana REZ. Image: Ampyr Australia. Renewable energy developer Ampyr Australia has secured Shell Energy ...

[AMPYR Australia takes over Shell's 50% stake in Wellington ...](#)

Feb 5, 2025 · It now fully owns the battery storage facility. AMPYR Australia is now the full owner of the Wellington Battery Energy Storage System (BESS) after acquiring Shell Energy ...



Contact Us

For catalog requests, pricing, or partnerships, please visit:
<https://ilsolarenergy.co.za>



Scan QR Code for More Information



<https://llsolarenergy.co.za>