

Voltage level of solar combiner box





Overview

What is a solar combination box?

What is a Solar Combiner Box?

A Solar Combiner Box is an essential electrical device used in photovoltaic (PV) power generation systems. Its primary function is to combine the output currents of multiple solar panel strings (PV strings) into a single output, which is then sent to the inverter for DC to AC conversion.

How do I choose a solar combiner box?

Investing in certified equipment ensures peace of mind and long-term reliability for your solar system. Compatibility with system components is another critical factor when selecting a solar combiner box. The box must integrate seamlessly with your photovoltaic system to ensure optimal performance and reliability.

What is a PV combiner box?

In every photovoltaic (PV) system, stable power generation relies on more than panels and inverters. Hidden behind the scenes is a critical piece of equipment: the PV combiner box. Though easy to overlook, this device plays a decisive role in current collection, circuit safety, surge protection, and intelligent monitoring.

How many PV string inputs can a combiner box support?

A standard combiner box supports 6–24 PV string inputs, with typical current per string ranging from 10–20A. Key features include: Reverse current protection is essential when module shading or mismatched strings cause imbalance. 2. Multiple Layers of Electrical Safety Protection These protection layers significantly reduce system downtime.



Voltage level of solar combiner box



[Solar Combiner Box: The Ultimate Buying Guide](#)

Solar Combiner Box: The Ultimate Buying Guide
Combiner boxes can be further classified into various types based on factors such as the number of input circuits, system voltage level, ...

[Understanding PV Combiner Boxes: Design, Function, ...](#)

Nov 22, 2025 · A complete guide to PV combiner boxes, covering structure, safety protection, monitoring, IP ratings, selection principles, and future smart trends. Learn how advanced ...



[Voltage of the combiner box of the photovoltaic power ...](#)

Nov 3, 2023 · A solar combiner box is unnecessary for projects voltage from 1,000VDC to 1,500VDC holds the promise of a more cost-effective and productive utility-scale plant due to ...



[Electrical Parameters to Consider When Designing a Combiner Box](#)

In photovoltaic (PV) power generation systems, the design of the combiner box is one of the key aspects. Its function is to aggregate the direct current (DC) from multiple PV strings and ...



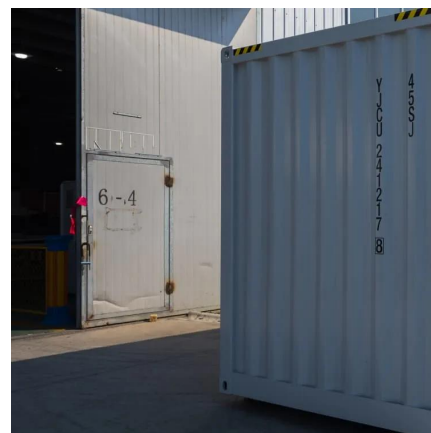
[The Ultimate Guide to Solar Combiner Boxes: From Basics to ...](#)

Sep 26, 2024 · Explore the comprehensive guide to PV Solar Combiner Boxes: Learn about types, components, selection criteria, installation best practices, maintenance, and advanced ...



[The Ultimate Guide to Residential Solar Combiner Box](#)

Dec 1, 2025 · This comprehensive guide examines the indispensable role of Solar Combiner Boxes in residential photovoltaic (PV) systems. Often described as the "central nervous ...



[How to Calculate PV Combiner Box Specifications?](#)

2 days ago · Learn how to calculate PV combiner box specifications for your solar project. Discover how to size input strings, fuse ratings, voltage, and current to ensure safety and ...





[Combiner Box Selection Guide: How to Choose the Right PV DC Box](#)

Dec 3, 2025 · Learn how to select the right solar combiner box with combiner box selection guide. Compare types, features, voltage ratings, and safety certifications for PV installations.



Contact Us

For catalog requests, pricing, or partnerships, please visit:
<https://llsolarenergy.co.za>

Scan QR Code for More Information



<https://llsolarenergy.co.za>