

UPS battery cabinet turned off the battery





Overview

How do you maintain a UPS battery?

Solution: Maintain UPS systems in climate-controlled, clean environments. Avoid placing batteries near heat sources or in areas with high vibration. Using proper ventilation and temperature monitoring can significantly extend battery life.

Why is my ups battery not charging?

UPS systems are designed to provide uninterrupted power during electrical failures, but like any technology, they can encounter issues—often related to the batteries. Here are common problems and solutions for UPS battery issues

1. **Battery Not Charging** Check Connections: Loose or corroded connections can prevent the battery from charging properly.

Why does my ups keep recharging?

Frequent Battery Discharges Check for Power Issues: If the UPS frequently switches to battery mode, check for power fluctuations or unstable voltage in your electrical system. **Reduce Load:** Overloading the UPS can cause frequent battery discharges. Ensure that the connected devices do not exceed the UPS's rated capacity.

How do I know if my ups is bad?

Inconsistent Power Output Battery Calibration: If the UPS is delivering inconsistent power, perform a calibration. This process involves fully discharging and recharging the battery to reset the internal settings and improve accuracy. **Battery Replacement:** Inconsistent power output can also be a sign of deteriorating battery health.



UPS battery cabinet turned off the battery



["UPS: The output power is turned off due to a low battery."](#)

Jun 29, 2021 · If the batteries are very far gone (AKA "toast"), it is feasible that the output turned off during the self test. In your data log, what does the battery voltage show - normally and ...

[Starting the UPS in Battery Mode](#)

Lithium Battery Cold Start Check that the cables between the UPS and the lithium battery cabinet are properly connected. Turn off mains input circuit breaker 1 (Q1-1), mains input circuit ...

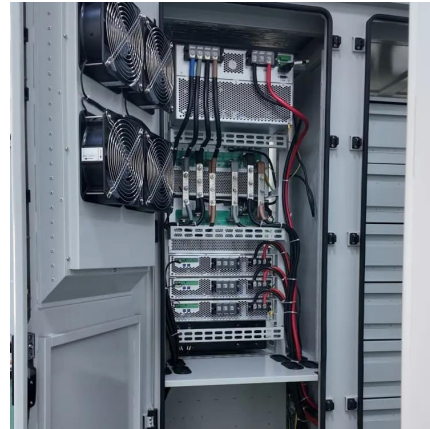


[Common UPS Battery Problems: Causes and Quick Solutions](#)

Aug 22, 2025 · Conclusion Understanding common UPS battery problems and implementing quick troubleshooting measures ensures reliable power backup for critical systems. Whether ...

[UPS: The output power is turned off. Why?](#)

Jun 28, 2021 · Hello, we have Symmetra LX 16000 UPS. There are 2 power modules 8KVA, 2 intelligence modules and 2 battery modules. The load is just about 10%. As we wanted to ...



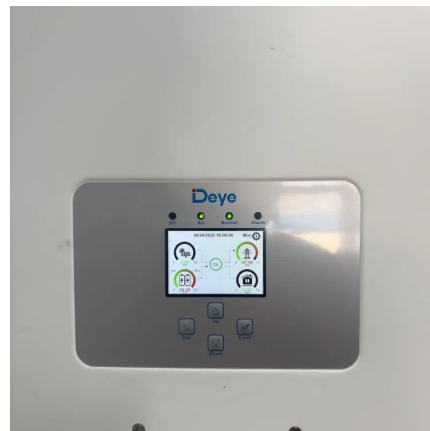
What does this mean

Mar 1, 2024 · Output power turned off means the UPS output power has turned off and you have no power at the outlets on the back of your UPS. I see battery related events there so ...



Can you switch-on an UPS when the Main Supply is Off?

Jul 3, 2025 · Yes, you can turn on a UPS when the main power is turned off, although this depends on the type of UPS & the battery condition: Offline (or) Standby UPS Online or ...



Solved: UPS shuts down long before battery ...

Jun 28, 2021 · Hello I have the following problem with my Backup UPS BX700U-GR: the UPS shuts itself down when running on battery long ...





[Common UPS Battery Issues and How to Address Them](#)

Oct 23, 2024 · UPS systems are designed to provide uninterrupted power during electrical failures, but like any technology, they can encounter issues--often related to the batteries. ...



[Can you switch-on an UPS when the Main ...](#)

Jul 3, 2025 · Yes, you can turn on a UPS when the main power is turned off, although this depends on the type of UPS & the battery condition: Offline ...

[How UPS Battery Cabinet Keep Businesses Powered](#)

Jun 20, 2025 · Discover how UPS battery cabinet protect your business from costly downtime. Learn how they work, why they matter, and how to choose the right one.



[Solved: UPS shuts down long before battery is empty](#)

Jun 28, 2021 · Hello I have the following problem with my Backup UPS BX700U-GR: the UPS shuts itself down when running on battery long before the battery is nearing depletion. So ...



Shut Down the Battery Solution

Manually set the battery breaker of each individual battery cabinet to the OFF (open) position to disconnect the battery power from the UPS. NOTE: The system BMS and rack BMS will still ...



Contact Us

For catalog requests, pricing, or partnerships, please visit:
<https://llsolarenergy.co.za>

Scan QR Code for More Information



<https://llsolarenergy.co.za>