

# **UPS battery cabinet safety distance**





## Overview

---

Is safety a mandatory requirement for UPS?

Ensuring the safety of service personnel is a mandatory requirement for UPS equipment and installations. Safety must be designed in to UPS systems; the only question is how to implement the safety design to achieve the maximum additional benefits in the form of improved system level resiliency.

How should a battery room be positioned?

The positioning of the battery room must be in close proximity to the UPS modules being supported. For voltage drop considerations, the UPS modules and battery systems should be in adjacent spaces— either side-by-side or vertically stacked. Battery room layouts should be clean and designed to maximize space usage.

How should a UPS system be stacked?

For voltage drop considerations, the UPS modules and battery systems should be in adjacent spaces— either side-by-side or vertically stacked. Battery room layouts should be clean and designed to maximize space usage. Proper code clearances must be maintained in and around battery strings for required maintenance support and life safety systems.

How do I install SMF VRLA batteries in a UPS system?

When installing batteries in a UPS system, especially SMF VRLA batteries, follow these simple steps to ensure safety: Battery Type: Use SMF VRLA batteries designed to recombine hydrogen gas safely. Hydrogen Gas: Manage hydrogen gas to prevent escape. Follow safety standards like IEEE-1187.



## UPS battery cabinet safety distance

---



### The Complete Guide to Choosing a Safe and Reliable Battery Storage Cabinet

Learn everything about choosing a safe, compliant, and effective battery storage cabinet. Explore features, risks, maintenance practices, cabinet types, and essential safety considerations for ...

### [Guidelines for storage & usAGE of lead acid batteries](#)

May 19, 2022 · 2 Lead-Acid Batteries Lead-acid batteries are the most widely used electrical energy storage, primarily for uninterrupted power supply (UPS) equipment and emergency ...



### [The distance between battery cabinets](#)

The difference between fireproof chemical and battery cabinets Please also read: Loxxer - fireproof charging and storage cabinets for li-ion batteries PGS 37-2 is an important guideline ...



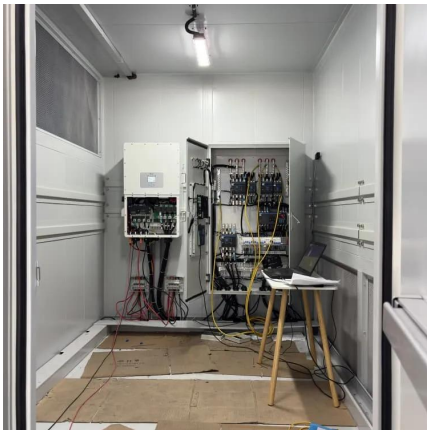
### [General requirements for the installation of UPS systems](#)

Oct 21, 2023 · Safety Measures: Use flame retardant doors for added safety. Limit electrical installations to lighting, ventilation, and safety equipment. Safety Equipment: Install smoke and ...



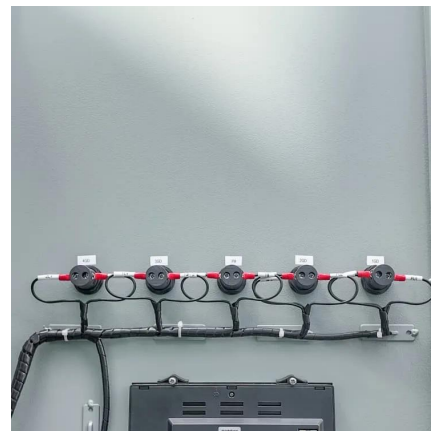
### [Installation Environment and Clearance Requirements](#)

Do not install the UPS in environments with conductive metal scraps in the air. The optimal operating temperatures for valve-regulated lead-acid (VRLA) batteries are 20-30°C. Operating ...



### [UPS installation safety requirements](#)

Jun 17, 2025 · This is why there are international and European regulations that businesses - and their data center facilities - must comply with. These distinct safety requirements of backfeed ...



### **Safety Rules**

Apr 19, 2018 · Safety Rules An Update on Lithium-ion Battery Use in Critical Facilities Introduction Lithium-ion batteries (LIB) offer many benefits when used in conjunction with data center ...





[PowerXpert 9395 UPS 550 kVA installation and ...](#)

Feb 27, 2023 · C A U T I O N If Eaton battery cabinets are located in the same room as the UPS, the battery cabinet environmental requirements supersede the UPS requirements. Operating ...



[MISSION CRITICAL FACILITIES DESIGN](#)

Apr 30, 2015 · Properly designed and constructed battery rooms in mission critical facilities will provide a safe, efficient, environmentally friendly place to house and care for critical UPS ...

[General requirements for the installation of ...](#)

Oct 21, 2023 · Safety Measures: Use flame retardant doors for added safety. Limit electrical installations to lighting, ventilation, and safety equipment. ...



[Installation Procedure for UPS for External Batteries](#)

NOTE: The distance between the modular battery cabinet (s) and the UPS must not exceed 100 m. Contact Schneider Electric for installations with a longer distance.



## Contact Us

---

For catalog requests, pricing, or partnerships, please visit:  
<https://llsolarenergy.co.za>

### Scan QR Code for More Information



<https://llsolarenergy.co.za>