

Two different solar container lithium battery packs connected in parallel





Overview

Can you connect two lithium batteries in parallel?

Yes, you can connect two lithium batteries in parallel to increase capacity while maintaining voltage. Ensure both batteries have identical voltage, capacity, and state of charge to prevent imbalances. Use proper wiring, fuses, and a battery management system (BMS) to mitigate risks like overheating or uneven current flow.

Why do lithium ion batteries need to be connected in series?

To meet the power and energy requirements of the specific applications, lithium-ion battery cells often need to be connected in series to boost voltage and in parallel to add capacity. However, as cell performance varies from one to another [2, 3], imbalances occur in both series and parallel connections.

What temperature should lithium batteries be installed in parallel?

Lithium batteries in parallel should operate within -20°C to 60°C . Cold environments increase internal resistance, causing uneven load distribution. Heat accelerates degradation; a 10°C rise above 30°C can halve lifespan. Always install batteries in temperature-controlled spaces and use BMS with thermal sensors.

Does connecting more cells in parallel prolong a pack's lifetime?

The range of cell capacity variations in each group was the same. By looking at the current gradient between cells, they concluded that connecting more cells in parallel can reduce the probability of inconsistency and thus prolong the pack's lifetime.



Two different solar container lithium battery packs connected in pa



Management of imbalances in parallel-connected lithium-ion battery packs

Aug 1, 2019 · Uneven electrical current distribution in a parallel-connected lithium-ion battery pack can result in different degradation rates and overcurrent issues in the cells. Understanding the ...

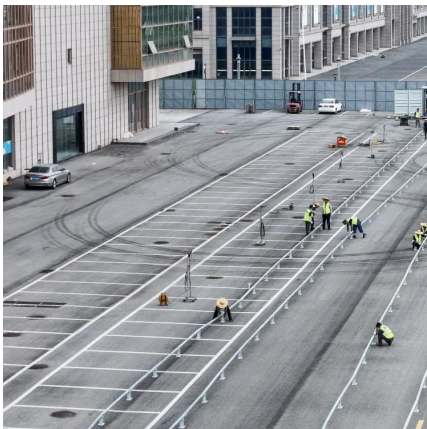
[Reformulating Parallel-Connected Lithium-Ion Battery ...](#)

Oct 21, 2025 · Jaffar Ali Lone, Nilsu Atlan, Simone Fasolato, Davide M Raimondo and Ross Drummond Abstract--This work presents analytical solutions for the current distribution in ...



[Can a lithium battery pack be used in parallel?](#)

Nov 21, 2025 · For example, if you have two 12 - volt, 10Ah lithium battery packs and you connect them in parallel, you'll end up with a 12 - volt, 20Ah battery system. This can be super useful in ...



[Balancing multiple LiTime 24V batteries connected in parallel](#)

Nov 10, 2024 · Below two steps are necessary to reduce the voltage difference between batteries and let the battery system perform the best of in in series or/and in parallel. Step 1: Fully ...



[How to Balance Lithium Batteries with Parallel ...](#)

Sep 1, 2023 · A parallel BMS regulates the current flow between 2 or multiple batteries connected in parallel, learn how it works and how to connect it.



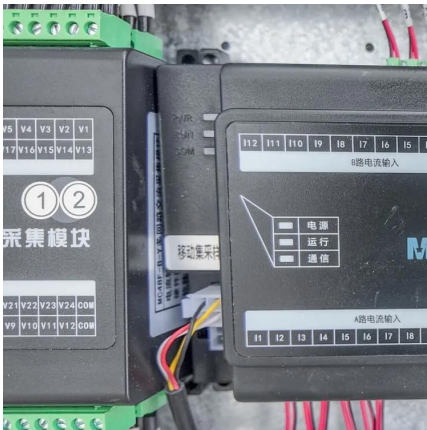
[Run two \(almost\) same battery packs in parallel](#)

Feb 21, 2025 · When using standard BMS, parallel connection of lithium batteries is not acceptable due to very likely damage to the BMS electronics (which may result in damage to ...



[Can You Safely Connect Two Lithium Batteries in Parallel?](#)

Yes, you can connect two lithium batteries in parallel to increase capacity while maintaining voltage. Ensure both batteries have identical voltage, capacity, and state of charge to prevent ...





[Two different lithium battery packs connected in parallel](#)

Nov 26, 2025 · Connecting multiple lithium batteries into a string of batteries allows us to build a battery bank with the potential to operate at an increased voltage, or with increased capacity ...



[How to Balance Lithium Batteries with Parallel BMS?](#)

Sep 1, 2023 · A parallel BMS regulates the current flow between 2 or multiple batteries connected in parallel, learn how it works and how to connect it.

[Paralleling Lithium Batteries in Solar Systems: Principles, ...](#)

Sep 15, 2025 · Solar power generation relies on sunlight, with peak power generation during the day and zero power generation at night. This requires lithium batteries to store sufficient ...



[Can I parallel multiple Lithium Battery Packs?](#)

May 27, 2025 · A lithium battery pack consists of multiple individual lithium cells connected in series and/or parallel to achieve the desired voltage and capacity. When cells are connected in ...



[Can I parallel multiple Lithium Battery Packs?](#)

May 27, 2025 · A lithium battery pack consists of multiple individual lithium cells connected in series and/or parallel to achieve the desired voltage ...



Contact Us

For catalog requests, pricing, or partnerships, please visit:
<https://llsolarenergy.co.za>

Scan QR Code for More Information



<https://llsolarenergy.co.za>