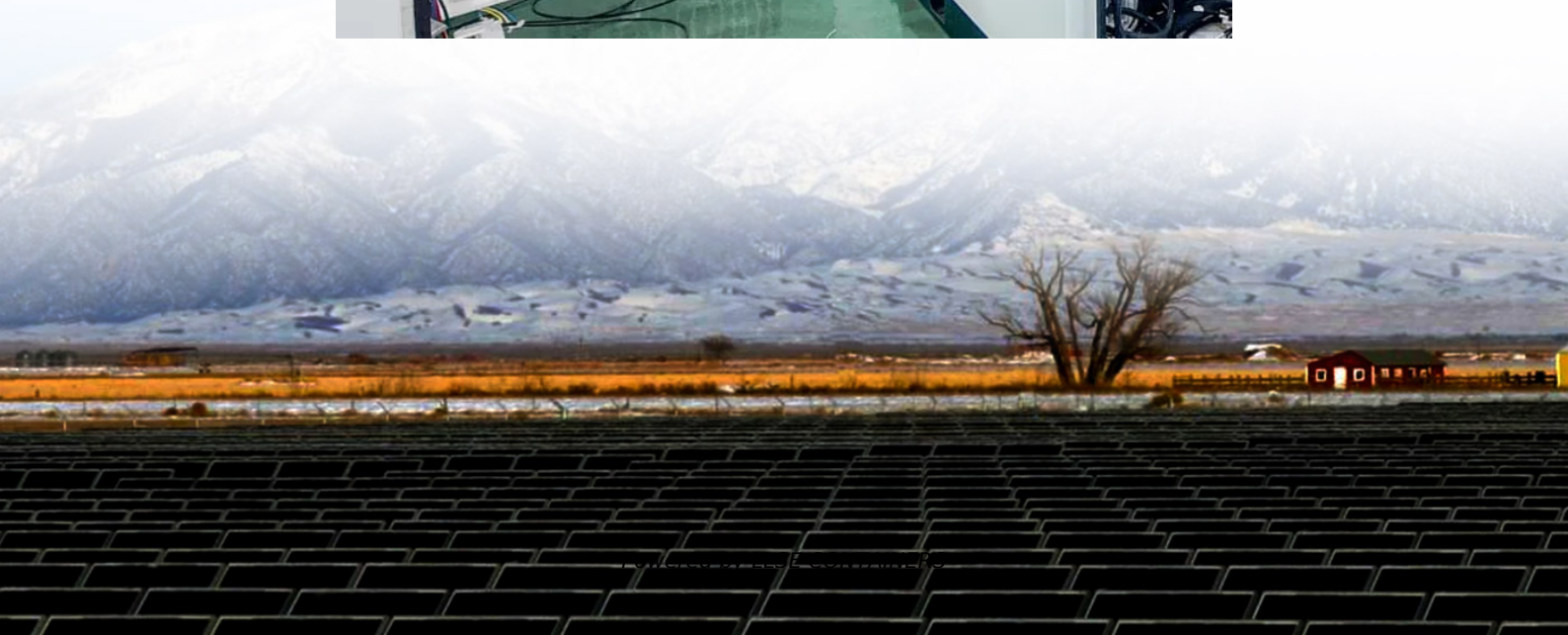


# Tool battery trigger protection





## Overview

---

What is a power tool trigger switch?

The power tool trigger switch is the unsung hero of your workshop. This seemingly simple component grants you complete control over the tool's operation, ensuring precision and safety during various projects. A malfunctioning trigger switch, however, can turn your trusty power tool into a frustrating and potentially dangerous device.

Why do I need a trigger switch?

**Ergonomic Design:** A comfortable trigger switch reduces fatigue and improves control during extended use. If your power tool experiences issues like erratic power delivery, inability to turn on/off, or a malfunctioning variable speed control, the trigger switch might be the culprit. Here's a basic guide for replacement:.

How do I replace a power tool trigger switch?

Here's a basic guide for replacement: Consult the user manual: Identify the correct replacement switch model for your specific power tool. **Safety First:** Unplug the tool and ensure it's completely powered off before disassembly. **Disassembly:** Following the user manual's instructions, disassemble the tool to access the trigger switch.

What is a lock-on trigger switch?

**Lock-On Trigger Switch:** Enables continuous operation without holding the trigger down, perfect for demolition or grinding. (Keywords: lock-on switch, grinder trigger switch) **Paddle Switch:** Common on larger power tools like angle grinders, requiring a squeeze action for activation.



## Tool battery trigger protection

---

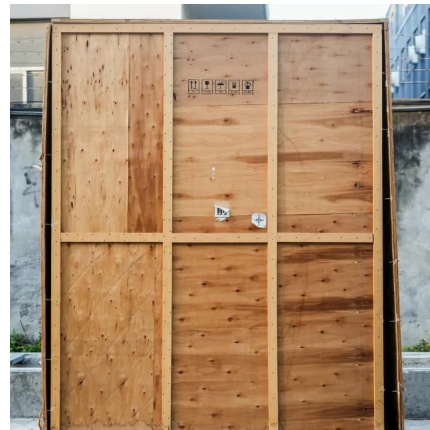


### [Power Tool Trigger Switch: Keeping You in Control](#)

The power tool trigger switch is a crucial component that provides control over the tool's operation. It allows you to initiate and regulate power delivery, ensuring precision and safety ...

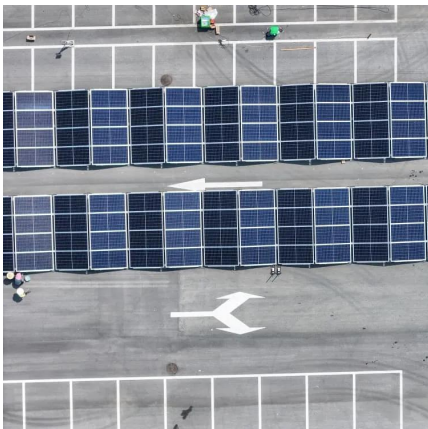
### [Battery Protection for Cordless Power Tools - ABLIC Inc.](#)

Dec 5, 2025 · ABLIC's battery protection ICs for multi-cell pack: Our vast product lineup provides strong support for developing safety-critical battery packs with secondary protection and other ...



### [CRIMPING TOOL · BATTERY POWERED · 62KN · DIES SERIES 85](#)

safety locking trigger protection membrane to ventilate the electronics keeping it safe from moisture and dust LED display panel for battery charge level, cycle conformity, maintenance ...



### [Battery Torque Wrench-Electric Torque Wrench-SMG](#)

Oct 24, 2024 · Our products are mainly battery torque wrench, pneumatic torque wrench, electric torque wrench, Tighten the shaft and related tools/accessories. We adopt world-class





...



### [Protect battery-powered tools in harsh environments ...](#)

Sep 5, 2023 · But what about the reliability of handheld, battery-operated tools? Tools exposed to harsh environments full of oil, grease and dirt constitute a perfect recipe for gummed-up ...



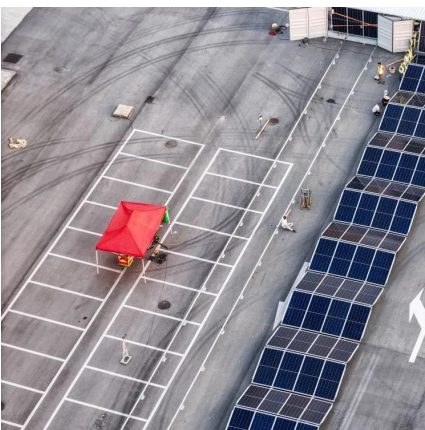
### [Why Should Tools Have Built-in Battery Protection?](#)

Jul 9, 2025 · Battery protection in tools refers to built-in circuits or software inside the tool body that monitor and protect the battery during operation. This helps prevent battery damage, ...



### [Improving Variable-speed Trigger Switches in Power ...](#)

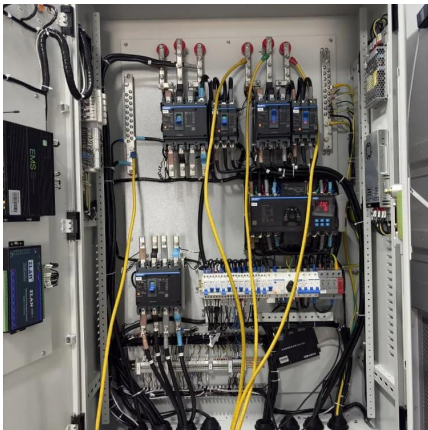
Sep 19, 2023 · Improving Variable-speed Trigger Switches in Power Tools through Capacitive Sensing TI Kevin Imagine a construction site where a hammer drill doesn't respond every time ...





## Understanding the Battery Protection System for Makita Tools

Dec 4, 2024 · Main Conditions that Trigger the Battery Protection System Overload Protection: This feature kicks in when the tool is overloaded, causing it to draw an unusually high current. ...



## High Power Variable Speed Trigger Switch With Battery Protection

High Power Variable Speed Trigger Switch With Battery Protection Electronics (Lithium) With UL Rated 16.1A 14.4V~28Vdc for application rating up to 45A, electronic bypass, cut off ...

## How to Use a Trigger Lock Tool for Continuous Power

5 days ago · The trigger lock tool is an accessory designed to maintain continuous power flow to a handheld power tool without requiring constant manual pressure on the trigger. This allows for ...



## Contact Us

---

For catalog requests, pricing, or partnerships, please visit:  
<https://llsolarenergy.co.za>



## Scan QR Code for More Information



<https://llsolarenergy.co.za>