

There is a power signal base station in Athens





Overview

Do mobile phones need a base station?

Mobile phones and other mobile devices require a network of base stations in order to function. The base station antennas transmit and receive RF (radio frequency) signals, or radio waves, to and from mobile phones near the base station. Without these radio waves, mobile communications would not be possible.

What is a base station antenna?

The base station antennas transmit and receive RF (radio frequency) signals, or radio waves, to and from mobile phones near the base station. Without these radio waves, mobile communications would not be possible. Radio waves have been used for communication for more than 100 years. Radio and television broadcasting are well-known examples of this.

What is a mobile phone base station?

A mobile phone base station provides coverage to a geographic area known as a “cell”. Cells are aligned next to each other in a similar pattern to a honeycomb, and it is for this reason that mobile phone networks are sometimes referred to as “cellular” networks.

What is a wireless base station?

A base station represents an access point for a wireless device to communicate within its coverage area. It usually connects the device to other networks or devices through a dedicated high bandwidth wire of fiber optic connection. Base stations typically have a transceiver, capable of sending and receiving wireless signals;



There is a power signal base station in Athens



Power Base Station

The transmitter characteristics define RF requirements for the wanted signal transmitted from the UE and base station, but also for the unavoidable unwanted emissions outside the transmitted ...

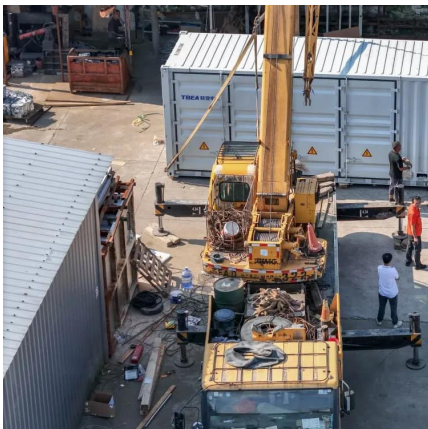
What Is A Base Station Antenna

Apr 22, 2024 · base station antenna is a crucial component of wireless communication networks, primarily used to facilitate the transmission and ...



5G NR launching in Greece: Preliminary in situ and ...

Mar 5, 2024 · Statistical analysis of the follow-up for inspections of the same base stations, before and after the 5G FR1 launching in Greece. Case study of a 5G FR1 base station during its pilot ...



The Athens Affair

Jun 29, 2007 · The mobile switching centers are particularly important to the Athens affair because they hosted the rogue phone-tapping software, and it is there that the eavesdropping ...



Base stations and networks

5 days ago · Base stations enable mobile communications Mobile phones and other mobile devices require a network of base stations in order to function. The base station antennas ...



EMF

Overview What happens when I make a call from my mobile phone? What is a mobile phone base station? Topography and physical constraints Mobile Network Cell capacity Radio frequency ...



BS (Base Station)

Mar 4, 2023 · A base station (BS) is a key component of modern wireless communication networks, providing the interface between wireless devices and the network infrastructure. In ...





What Is A Base Station Antenna

Apr 22, 2024 · base station antenna is a crucial component of wireless communication networks, primarily used to facilitate the transmission and reception of radio waves between a network ...



Base stations and networks

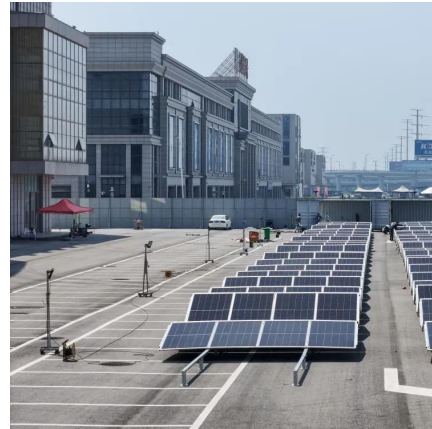
Base Stations Enable Mobile Communications
Antennas Are Placed in Various Locations
More Mobile Devices Means More Base Stations
Base Station Output Power Is Low
Exposure Limits Are Set by Independent Organizations
Exposure Levels Are Much Lower Than The Limits
Public Access Is Restricted Where Needed
No Adverse Health Effects According to The Who
The antenna output power level is typically between 10 and 100 watts for an outdoor base station. Television transmitters, by comparison, usually have a thousand times higher output power than outdoor base stations. Antennas mounted indoors have about the same power as mobile phones. See more on ericsson emf explained

EMF - Mobile Networks Explained - L2

Overview What happens when I make a call from my mobile phone? What is a mobile phone base station? Topography and physical constraints ...

Base Stations

Jul 23, 2025 · What is Base Station? A base station represents an access point for a wireless device to communicate within its coverage area. It usually connects the device to other ...



Contact Us

For catalog requests, pricing, or partnerships, please visit:
<https://llsolarenergy.co.za>

Scan QR Code for More Information



<https://llsolarenergy.co.za>