

Static configuration of wind power generation system





Overview

How is voltage stability assessed in a wind farm?

The voltage, reactive power and active power of each bus in the system are collected for voltage stability assessment. The capacity of the wind farm is 200 MW and the power factor is set as 0.99. The power flow analysis results and voltage distribution of the test can be demonstrated in Fig. 4, Fig. 5, respectively. Fig. 3.

How does wind speed affect voltage stability?

The wind speed is the critical factor that influenced the stability assessments. As the wind speed increases 8 m/s to 15 m/s, the output active power and reactive power of the wind farm changes, which influences the voltage stability margin of the test system.

Does wind speed affect voltage stability margin?

As the wind speed increases 8 m/s to 15 m/s, the output active power and reactive power of the wind farm changes, which influences the voltage stability margin of the test system. It is clear that the proposed approach is able to reflect the change of the voltage stability margin as the wind speed increases. Table 1.

Does reactive power affect static voltage stability?

With the growing complexity of power system, there is an urgent need for in-depth research on the impact of reactive power on static voltage stability. This paper proposes a quantitative assessment approach of static voltage stability for the power system with high-penetration wind power based on the energy function.



Static configuration of wind power generation system



[Design and Configuration of Wind Plants](#)

For purposes of characterizing the plant for transmission studies, the static, dynamic, and load-dependent effects of the collector system on the net reactive power at the interconnection ...

[Static configuration of wind power generation system](#)

About Static configuration of wind power generation system video introduction Our solar industry solutions encompass a wide range of applications from residential rooftop installations to large ...



[Quantitative assessment of static voltage stability for power system](#)

Dec 1, 2024 · This paper proposes a quantitative assessment approach of static voltage stability for the power system with high-penetration wind power based on the energy function.

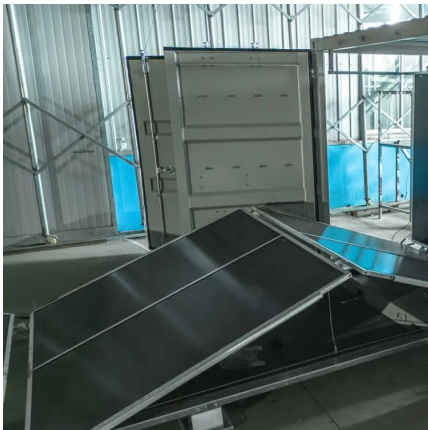
[Basics of Wind Power Generation System](#)

Oct 26, 2025 · This chapter introduces the basic knowledge related to modern wind power generation system (WPS), especially for the variable-speed WPS. It explains the important ...



[Static voltage stability analysis of power systems with wind ...](#)

May 7, 2025 · Furthermore, analysis is made on the main factors affecting the stability limit of static voltage in the system as well as the wind power accepting capacity of power grids in ...



[Two-Stage Optimal Configuration Strategy of Distributed](#)

Sep 23, 2024 · The transmission end of large-scale wind power generation bases faces challenges such as high AC-DC coupling strength, low system inertia, and weak voltage ...



[Static and dynamic configuration of wind power ...](#)

Nov 28, 2025 · Abstract-- This paper applies the static var compensator (SVC) to improve dynamic performance of wind power generation system. The mathematical model of double ...





Static and Transient Stability Analysis of Power System Containing Wind

Dec 25, 2021 · Regarding to the multi-unit power system, this paper proposes a stability analysis framework considering wind power plan by simulating the operating conditions of power ...



[Full-Characteristic Power Flow of Power Systems with Wind ...](#)

Mar 13, 2025 · The number of wind turbines in the power system is increasing, and it is practical and significant to study the power flow calculation including wind farm nodes. Based on the full ...

[Full-Characteristic Power Flow of Power Systems with ...](#)

Apr 14, 2025 · Abstract The number of wind turbines in the power system is increasing, and it is practical and significant to study the power flow calculation including wind farm nodes. Based ...



[Design and Configuration of Wind Plants](#)

For purposes of characterizing the plant for transmission studies, the static, dynamic, and load-dependent effects of the collector system on the net ...



Contact Us

For catalog requests, pricing, or partnerships, please visit:
<https://llsolarenergy.co.za>

Scan QR Code for More Information



<https://llsolarenergy.co.za>