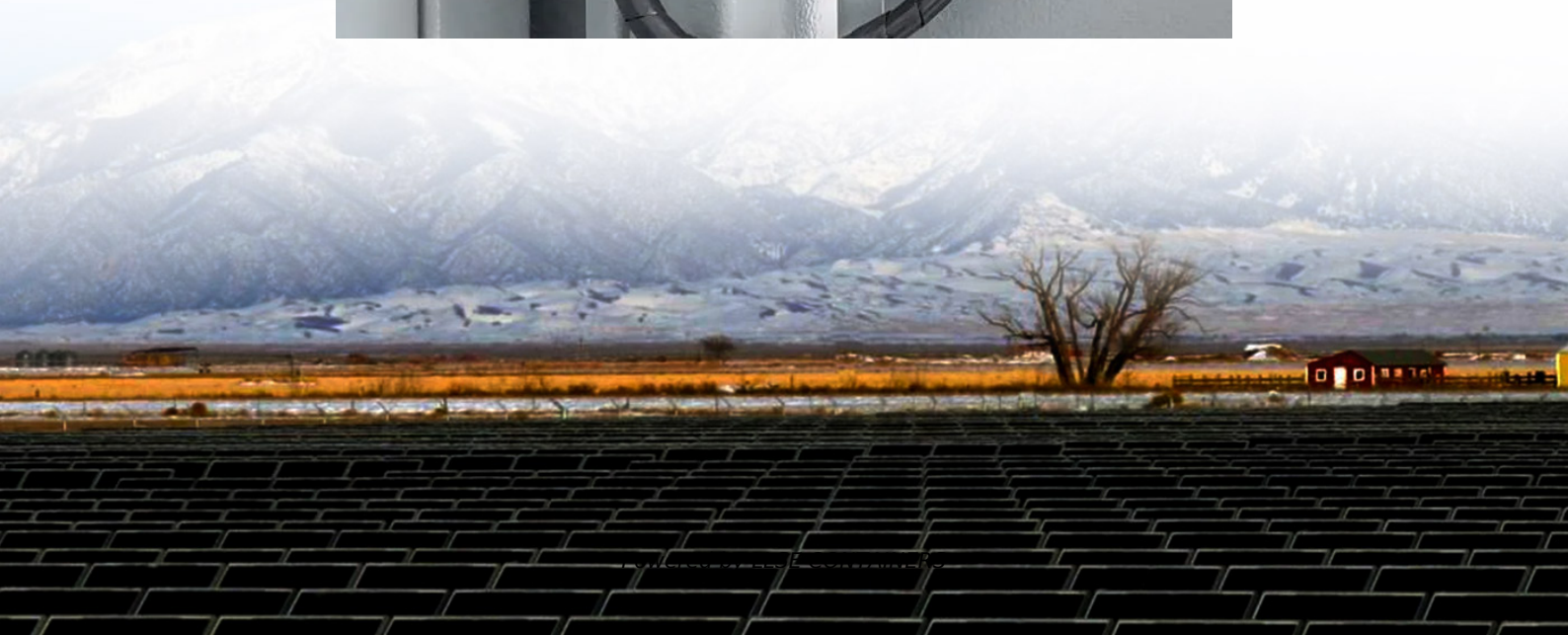


Solar panel roof angle standard





Overview

For maximum output, the sweet spot for solar panels in the continental U.S. is facing roughly south and tilted between 15 and 40 degrees, according to the Department of Energy. What angle should a solar roof be built at?

In a perfect world (well my perfect world anyway) all roofs would be built at the ideal pitch to maximize solar output. However, as mentioned before, most roofs in Australia are at 15° or 22.5°. So how much solar power are you losing if your panels are not at the perfect tilt angle?

.

What angle should solar panels be installed?

The optimal installation angle for solar panels matches the measurement value of your geographical location. People who live at locations measuring 35 degrees should usually select 35-degree roof pitches for optimal performance. Dynamic factors throughout the year, together with sun position, change the effectiveness of the recommended angle.

Are solar panels at a perfect tilt angle?

However, if my roof were flat output would be 12% lower compared to having the solar panels at 28°. So the moral of the story is: if your roof is pitched at more than 10°, your solar panels are probably not at their theoretically perfect tilt angle, but they will be close enough.

What is the best solar panel angle?

As we've mentioned earlier, your location's latitude plays a major part in determining the best solar panel angle. Across the continental U.S., the optimal tilt can range from 30-45 degrees. However, the further north you live, the more orientation can affect solar panel efficiency.



Solar panel roof angle standard

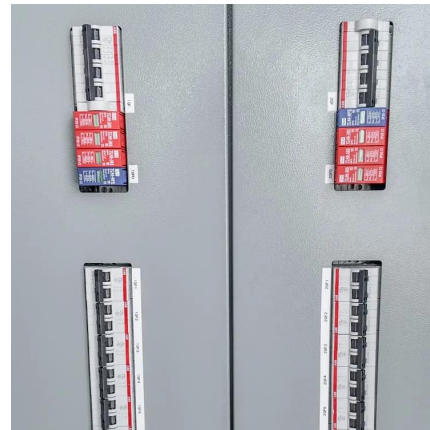


[Best Roof Angle for Solar Panels: Optimize Tilt for Maximum ...](#)

Sep 23, 2025 · The choice of the best roof angle for solar panels directly affects system output, long-term savings, and seasonal performance. This article explains how tilt and roof pitch ...

[Understanding Roof Pitch and Solar Panel Angles for Better ...](#)

May 16, 2025 · Additionally, a well-optimized solar energy system enhances property value, as future buyers recognize the benefits of lower energy bills and a reduced carbon footprint. ...



[Roof Pitch for Solar Panels: Best Angles for Maximum Efficiency](#)

Mar 14, 2025 · Discover the best roof pitch for solar panels to maximize efficiency. Learn how angles impact energy production and optimize your solar setup.

[What's the Best Angle for Solar Panels to Get Maximum ...](#)

Sep 17, 2025 · Overview The output and performance of solar panels will vary based on a lot of factors, including the tilt angle of the solar array. In this article we'll be covering standard



roof ...



[Understanding Roof Pitch and Its Impact on Solar Panel](#)

Aug 4, 2025 · Conclusion In summary, understanding roof pitch and its effect on solar panel performance is essential for maximizing energy output. By paying attention to the angle and ...

[Optimizing Roof Angle And Orientation For Solar Installation](#)

May 9, 2025 · The angle and orientation of your roof play pivotal roles in determining how much sunlight your solar panels can capture daily. Roofs with improper angles or facing the wrong ...



[Solar Panel Best Angle , Tilt & Orientation Guide 2025](#)

Sep 6, 2025 · Find the best solar panel angle for your location. Learn tilt formulas, seasonal adjustments, and tips to maximize energy efficiency in 2025.



Optimal Roof Angle for Solar Panels: A Practical Guide to ...

Oct 16, 2025 · The optimal roof angle for solar panels balances sun exposure with seasonal shifts, roof constraints, and installation costs. This guide explains how tilt and orientation influence ...



Which Solar Panel Angle Is Best?

What If You Have A Flat Roof? Does The Amount of Tilt Angle Really Matter? So What Is The Best Angle For A Solar Panel? The angle of the sun in the sky depends on both the season and your location. In winter the sun is lower in the sky, while in summer it is higher. The closer you live to the equator (i.e. the lower your latitude), the higher the sun is in the sky all year round. Also, the best tilt is affected by local weather patterns. This makes calculating the optimal angle difficult. See more on solarquotes hevan

Understanding Roof Pitch and Solar Panel ...

May 16, 2025 · Additionally, a well-optimized solar energy system enhances property value, as future buyers recognize the benefits of lower energy ...

Contact Us

For catalog requests, pricing, or partnerships, please visit:
<https://lsoleenergy.co.za>



Scan QR Code for More Information



<https://llsolarenergy.co.za>