

# **Solar panel current increases**





## Overview

---

Why do solar panels need voltage and current calculations?

A well-designed system ensures optimal energy yield, prevents electrical failures, and enhances system longevity. This article provides a comprehensive analysis of voltage and current calculations for different solar panel configurations, including series, parallel, and hybrid arrangements.

What happens if you connect solar panels in parallel?

That is connecting solar panels in parallel increases the available current of the system, so two identical panels connected in parallel will produce double the current as compared to just one single panel. But while the currents add up, the panel voltage stays the same.

Why do solar panels need a higher current value?

Thus, it is this higher current value which needs to be considered when installing cabling between parallel connected panels and DC loads, etc. It is also possible to have series connected solar panels called “strings”, and then connect the individual series strings together in parallel branches.

What is the effect of parallel wiring in photovoltaic solar panels?

Thus the effect of parallel wiring is that the voltage stays the same while the amperage adds up. Photovoltaic solar panels generate a current when exposed to sunlight (irradiance) and we can increase the current output of an array by connecting the pv panels in parallel.



## Solar panel current increases

---



### [String Voltage and Current Calculation for Different Solar Panel](#)

Mar 14, 2025 · When designing a solar photovoltaic (PV) system, calculating string voltage and current is crucial for ensuring compatibility with inverters and maximizing efficiency. A well ...

### [Understanding Solar Panel Voltage and Current Output](#)

Decode solar panels specifications to safely connect your panels to power station or charge controller. This quick guide unlocks full solar potential.



### [How Solar Panel Temperature Effect Impacts Open-Circuit ...](#)

Discover how the solar panel temperature effect reduces open-circuit voltage, slightly increases short-circuit current, and causes significant power loss. Learn about temperature coefficients ...



### [String Voltage and Current Calculation for ...](#)

Mar 14, 2025 · When designing a solar photovoltaic (PV) system, calculating string voltage and current is crucial for ensuring compatibility with ...



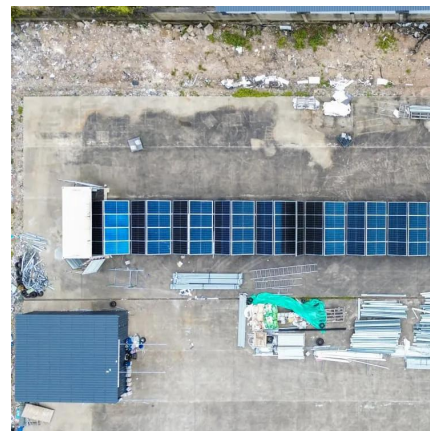
### [Understanding Current, Loads & Power ...](#)

1 day ago · When it comes to designing and installing solar electric systems, having a good grasp of the fundamentals is crucial. In this post, we'll ...



### [Understanding Solar Panel Voltage and ...](#)

Decode solar panels specifications to safely connect your panels to power station or charge controller. This quick guide unlocks full solar potential.



### [Current , Solamp IO Help Center](#)

Cell Current: Each individual solar cell produces a certain amount of current, depending on its size, efficiency, and the intensity of the sunlight.  
Module Current: In a solar panel (module), ...







### [How do solar panels increase current?](#)

May 21, 2024 · Solar panels increase current by converting sunlight into electrical energy through several mechanisms: 1. Photovoltaic effect, 2. ...



### [How do solar panels increase current? . NenPower](#)

May 21, 2024 · Solar panels increase current by converting sunlight into electrical energy through several mechanisms: 1. Photovoltaic effect, 2. Material composition, 3. System design, 4. ...

### [Relationship between voltage and current of ...](#)

Overview: The field performance of photovoltaic "solar" panels can be characterized by measuring the relationship between panel voltage, current, and power output under differing environmental ...



### [What is the difference between voltage and current in solar cell](#)

Solar panels don't just magically turn sunlight into electricity--they rely on two key electrical concepts: voltage (V) and current (I). If you've ever seen a solar panel's specs, you've probably ...



## Why solar panel voltage remains rather constant while current increases

Nov 13, 2025 · Did an experiment and found that when the light intensity shining onto the solar panel increases, the measured current increases while the measured voltage remains more or ...



## [Parallel Connected Solar Panels For Increased Current](#)

Apr 24, 2024 · How to Connect Solar Panels in Parallel Photovoltaic solar panels generate a current when exposed to sunlight (irradiance) and we can increase the current output of an ...

## [Understanding Current, Loads & Power Generation](#)

1 day ago · When it comes to designing and installing solar electric systems, having a good grasp of the fundamentals is crucial. In this post, we'll briefly look into the types of electrical current, ...



## Contact Us

For catalog requests, pricing, or partnerships, please visit:  
<https://lsoleenergy.co.za>



## Scan QR Code for More Information



<https://llsolarenergy.co.za>