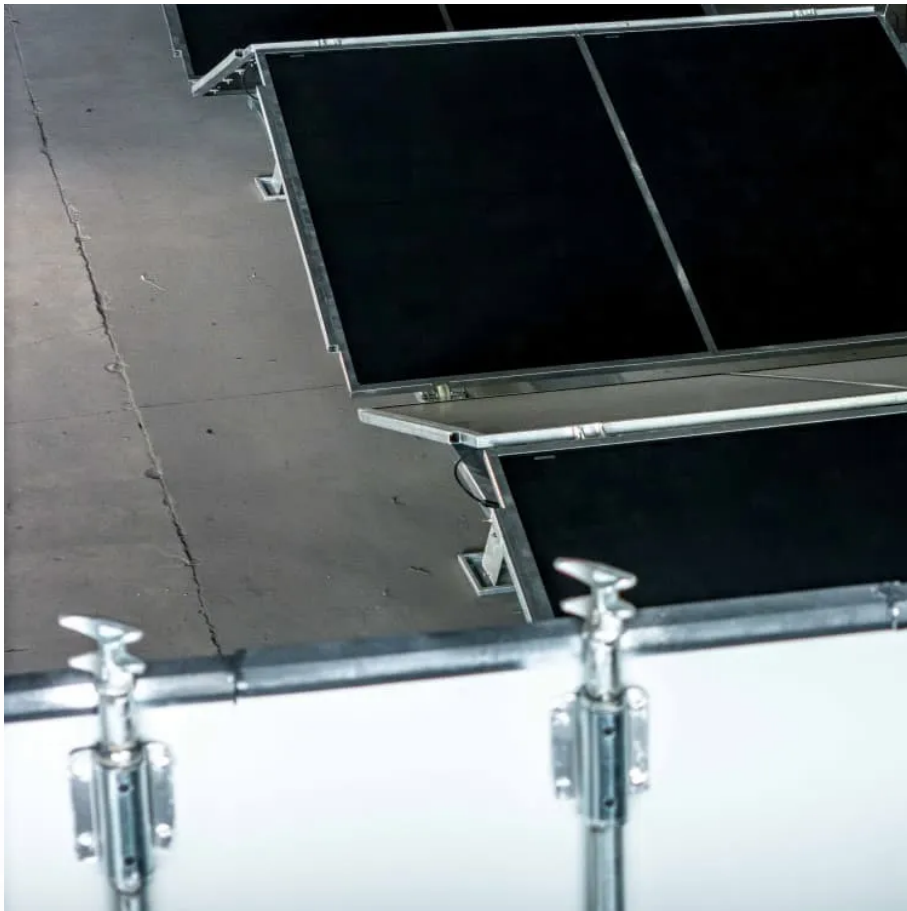


# **Sine wave inverter voltage**





## Overview

---

What voltage does a sine wave inverter use?

**Input Voltage:** This must match the voltage of your DC power source. Common values are 12V, 24V, or 48V. In conclusion, sine wave inverters play a crucial role in converting DC power from sources like batteries or solar panels into the AC power that most of our appliances and devices need.

What are the different types of sine wave inverters?

The square wave, modified sine wave, and quasi-sine wave all have a number of harmonics, which, as you know, are sine waves with frequencies that are odd multiples of the fundamental frequency and different amplitudes. Harmonics are especially troublesome in some applications, so high-quality sine wave inverters are the most widely used type.

How does a pure sine wave inverter work?

A pure sine wave inverter efficiently converts direct current (DC) into alternating current (AC) by generating a waveform that closely matches the smooth sinusoidal profile of grid-supplied electricity. The internal process involves several key stages:.

How do I choose a sine wave inverter?

When selecting a sine wave inverter, it's crucial to consider the power requirements of your appliances and the energy source. A power output rating that matches your total power requirement, coupled with the right input voltage for your DC source, will ensure a reliable and efficient system.



## Sine wave inverter voltage

---

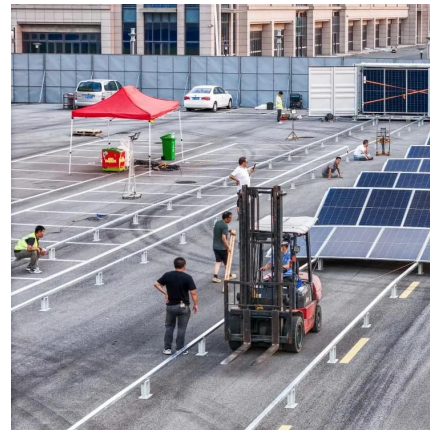


### What are the Differences: Pure Sine Wave Inverter vs Modified Sine Wave

Oct 12, 2024 · Modified sine wave inverters: Modified sine wave inverters may cause problems with some devices, such as increased noise in audio equipment, erratic behavior of electronic ...

### Sine Wave Inverter - Definition, Circuit Diagram & Waveforms

Jul 10, 2021 · In this topic, you study Sine Wave Inverter - Definition, Circuit Diagram, Waveforms & Advantages. Sine Wave Inverter uses Sinusoidal Pulse Width Modulation (SPWM) ...



### AN-CM-374 Sine Wave Based Inverter

Jan 31, 2024 · The offset of the sine wave is set by the VREF voltage (corresponding to  $V_{DD}/2$ ), and the amplitude is controlled by an automatic gain control (AGC) implemented with another ...

### 6.4. Inverters: principle of operation and parameters

The three most common types of inverters made for powering AC loads include: (1) pure sine wave inverter (for general applications), (2) modified square wave inverter (for resistive, ...



## DESIGN & CONSTRUCTION OF SINE WAVE INVERTER

Mar 18, 2024 · These altered inverters generate a sine wave, which is utilized to supply power to sensitive electronic devices. Here, a straightforward voltage-driven inverter circuit is ...

## CHAPTER 2

Dec 22, 2023 · generator. The filter capacitor across the input terminals of the inverter provides a constant dc link voltage. The inverter therefore is an adjustable-frequency voltage source. The ...



## How Does a Pure Sine Wave Inverter Work? A ...

4 days ago · A pure sine wave AC signal oscillates smoothly in a symmetrical, curved pattern, with voltage rising from 0 to a positive peak, falling back to 0, dropping to a negative peak, and ...







## [Design your own Sine Wave Inverter Circuit from the Scratch ...](#)

Nov 30, 2025 · The voltage waveform output from a modified inverter is optimized to produce a modified square wave which is closer to a sine wave but not a pure sine wave. These inverters ...



## [Inverter Types & Working Principle , Sine Wave, Square ...](#)

How Does An Inverter Work? Modular Inverters System Square Wave Inverter Working Modified Sine Wave Inverter Working Single-Phase Sine Wave Inverter Working Basic Operation of The Sine Wave Inverter Three-Phase Inverter Working An inverter takes the DC output voltage of the renewable energy system or backup batteries and converts it to AC. In small-scale user systems, the output is typically a standard utility voltage (120 V or 240 VAC in North America) and can be a single-phase output voltage or a three-phase voltage, depending on the system. These inverters are generally See more on electricalacademia Electricity - Magnetism

## **Sine Wave Inverters - Electricity - Magnetism**

Oct 26, 2023 · A sine wave inverter operates by transforming a DC input into an AC output that closely mimics the pure sine wave of traditional power ...

## [800VA Pure Sine Wave Inverter's Reference Design](#)

Apr 1, 2023 · The pure Sine Wave inverter has various applications because of its key advantages such as operation with very low harmonic distortion and clean power like utility-



supplied ...



### Sine Wave Inverters - Electricity - Magnetism

Oct 26, 2023 · A sine wave inverter operates by transforming a DC input into an AC output that closely mimics the pure sine wave of traditional power grid electricity. This smooth, ...



### Pure Sine Wave Inverter: Clean Power Guide 2025

Apr 21, 2025 · A pure sine wave inverter ensures proper voltage regulation and minimizes the risk of overheating, malfunction, or reduced lifespan due to waveform irregularities.



### Inverter Types & Working Principle , Sine Wave, Square Wave...

2 days ago · The article provides an overview of inverter technology, explaining how inverters convert DC to AC power and detailing the different types of inverters--sine wave, square ...



## Contact Us

---

For catalog requests, pricing, or partnerships, please visit:  
<https://llsolarenergy.co.za>

### Scan QR Code for More Information



<https://llsolarenergy.co.za>