

Safe distance between solar container lithium battery and inverter





Overview

How far away should a solar panel inverter be?

When considering the solar panel inverter distance, one of the first things to remember is how far your inverter and battery are from the main electrical panel. For example, placing your inverter and battery in a guest house 100 feet away from the main panel can affect your system's performance. Voltage Drop and Efficiency.

What is the ideal distance between solar panels and batteries?

The ideal distance between solar panels and batteries is up to 10 feet. This distance helps keep energy losses minimal, typically below 2%. Keeping your setup within this range ensures optimal efficiency in your solar energy system. Why is the distance important in a solar energy system?

.

How far should a solar panel inverter be from a guest house?

In conclusion, managing your solar panel inverter distance by storing the inverter and battery in a guest house and running the lines to the main panel over 100 feet is practical. This is true, provided the system is designed correctly.

Do solar panels & batteries need to be far apart?

Solar optimized cable wires like the WindyNation 8 AWG will definitely help in case the panels and batteries have to be far apart. In RVs the solar panels are usually on the roof and the battery is inside the vehicle. There is only a few feet between them so energy loss is minimal.



Safe distance between solar container lithium battery and inverter



[Solar Panel Distance \(Battery + Charge Controller + ...\)](#)

What Is Power Loss? How Far Can Solar Panels Be from Battery? How Far Away Can Solar Panels Be from Inverter? Do You Need An Inverter For Solar Power? How Far Apart Should Solar Components be? How Far Can Solar Panels Be from A House? How Far Can You Run Solar Panels? How Far Apart Should Solar Panels be? Many solar arrays are installed on the roof of the house. That location puts the solar panels close to the controller, batteries, and inverter. Ideally, you do not want more than 20-30 feet of line between the solar array and the next solar component, whether a controller or a battery system. See more on solvoltaics portablesolarexpert

Guide to the Right Distance between Solar ...

The distance between solar panels and battery can make or break a setup. Use these charts to properly configure your solar panel system.

[How Far Should Solar Panels Be? 5 Efficiency ...](#)

The distance between your solar panels and inverter/battery, along with proper roof spacing, plays a pivotal role in system efficiency. By keeping ...



What is the maximum distance between the furthest battery to the inverter?

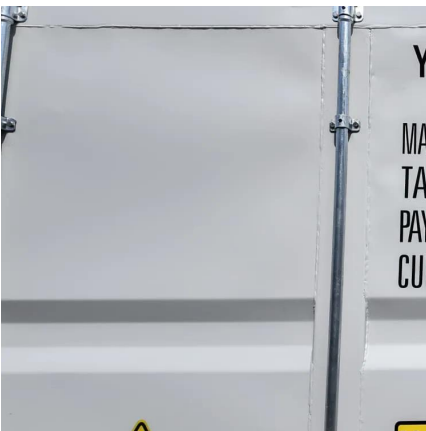
What is the distance between solar inverter and



battery? Solar Panels generate DC Current which is transported through DC wire via a Solar Charge Controller or Solar Inverter to a DC Battery. ...

[Solar Panel Distance \(Battery + Charge Controller + Inverter...](#)

Sep 9, 2022 · Does the distance between the solar panels, battery storage system, and controller make a difference? The distance between your solar panel components -- the panels, ...



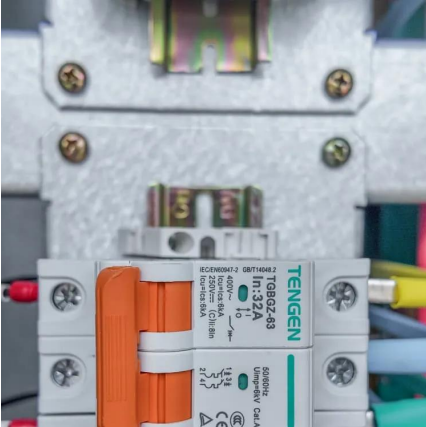
[Battery to inverter distance](#)

Dec 23, 2024 · The distance from the inverter mount location (very close to egress wall), to underground conduit, through conduit to concrete wall and up to working height and battery ...

[How Far Should Solar Panels Be? 5 Efficiency Secrets](#)

The distance between your solar panels and inverter/battery, along with proper roof spacing, plays a pivotal role in system efficiency. By keeping cable runs short, choosing the right materials, ...



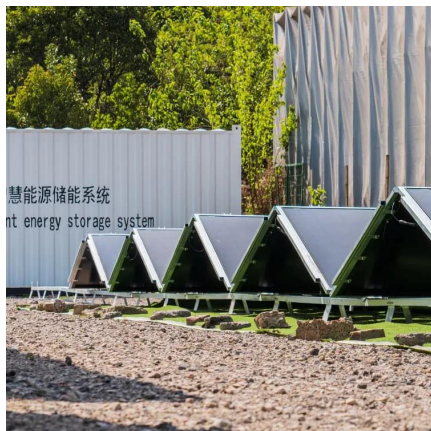


[Solar Panel Inverter Distance: How Far Can They Be from ...](#)

3 days ago · What Impact Does Placing the Battery and Inverter in a Separate Building Have? When considering your solar panel inverter distance, storing the inverter and batteries in a ...

[How Far Can Solar Panels Be from Battery to Maximize ...](#)

Dec 11, 2024 · Discover how the distance between solar panels and batteries affects the efficiency of your solar energy system. This article offers essential guidelines for optimal ...



[How Far Can Solar Panels Be From the Inverter?](#)

Jul 15, 2025 · The Relationship Between Solar Panels and Inverters Solar panels and inverters are integral parts of any solar energy system. The panels generate electricity from sunlight, ...

[Maximum distance between solar panels and inverter](#)

In the case of RVs, solar panels are typically on the roof, and the battery is inside the vehicle, with only a few feet between them, minimizing energy loss. However, in homes, the distance ...



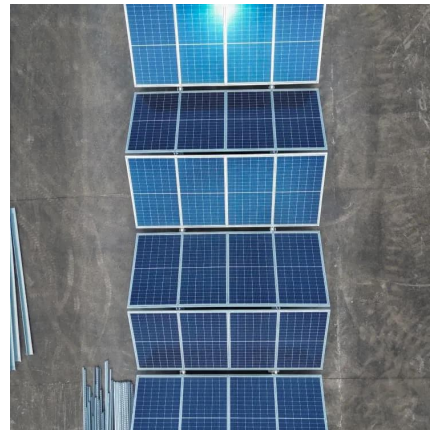


[Guide to the Right Distance between Solar Panels and Battery](#)

The distance between solar panels and battery can make or break a setup. Use these charts to properly configure your solar panel system.

[How Far Can Solar Panels Be from Battery and ...](#)

Sep 12, 2024 · The inverter is a device that converts DC electricity from solar panels and batteries to AC electricity that can be used to power your ...



[How Far Can Solar Panels Be from Battery and Other ...](#)

Sep 12, 2024 · The inverter is a device that converts DC electricity from solar panels and batteries to AC electricity that can be used to power your home or business. The distance between the ...

Contact Us

For catalog requests, pricing, or partnerships, please visit:
<https://lsoleenergy.co.za>



Scan QR Code for More Information



<https://llsolarenergy.co.za>