

Roof orientation and solar panel installation





Overview

What is the best orientation for solar panels?

The ideal orientation of solar panels depends on the orientation of the roof. This is because solar panels are placed on the roofs. To determine the best orientation for your solar panels, your roof should face southwards.

Why is roof orientation and tilt important?

Two critical factors, roof orientation and tilt, play important roles in maximizing the energy that solar panels can capture from the sun. Understanding and optimizing these factors can significantly enhance solar panel efficiency and ensure you can generate the most energy from the installations. Why Roof Orientation and Tilt Are Critical?

.

What is solar panel orientation?

Solar panel orientation refers to the placement, direction, and angle of solar panels, specifying the cardinal direction the panel faces, which helps it receive direct sunlight throughout the day. The cardinal directions are the north, south, east, or west, and they depend on your location and the path of the sun.

Which roof angle is best for solar energy production?

An angle that matches the latitude of the location generally offers the best year-round potential for solar energy production. The ideal roof orientation for maximizing solar panel efficiency varies by hemisphere. In the Northern Hemisphere, solar panels achieve maximum efficiency when mounted on south-facing roofs.



Roof orientation and solar panel installation

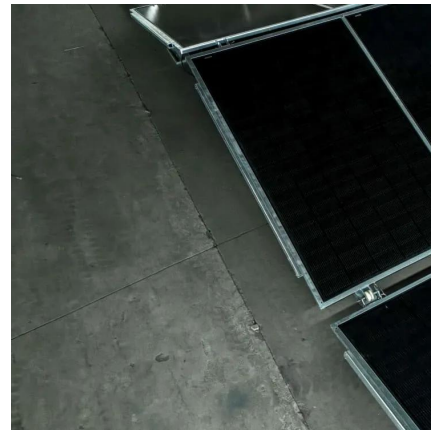


[Best Direction for Solar Panels on Roof](#)

Mar 28, 2025 · The best roof direction for solar panels considers several variables, including geographical location, roof pitch, and potential shading from trees or other structures. An ...

[Optimizing Roof Angle And Orientation For ...](#)

May 9, 2025 · When planning for solar panel installation, one critical aspect that significantly influences energy production is the design of your roof. ...



[Best Placement for Solar Panels on Roof](#)

Jul 17, 2025 · To get the most out of your solar panel system, placement plays a crucial role in ensuring optimal sunlight exposure, system ...

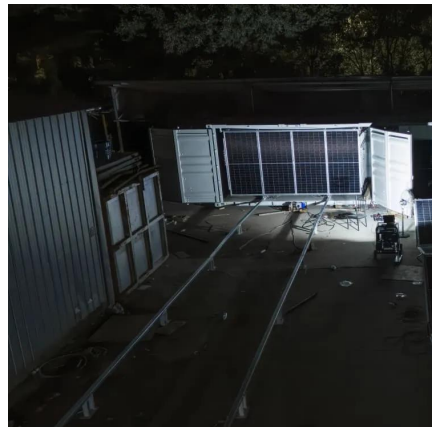
[The Science Behind Roof Orientation and ...](#)

3 days ago · The efficiency of solar panels is impacted by the specific characteristics of the roof on which they are installed. Two critical factors, ...



[Optimizing Roof Angle And Orientation For Solar Installation](#)

May 9, 2025 · When planning for solar panel installation, one critical aspect that significantly influences energy production is the design of your roof. The angle and orientation of your roof ...



[Solar Panel Placement: Best Direction & Orientation Guide](#)

3 days ago · The way your solar panels are positioned can drastically impact their performance. Proper solar panel ...



[The Best Orientation for Solar Panels . Geo Green Power](#)

Dec 5, 2025 · Learn the best orientation for solar panels (South) and effective alternatives like East-West facing roof orientation for solar panels.





[Best Direction for Solar Panels on Roof](#)

Mar 28, 2025 · The best roof direction for solar panels considers several variables, including geographical location, roof pitch, and potential ...



[Solar Panel Placement: Best Direction & Orientation Guide](#)

3 days ago · The way your solar panels are positioned can drastically impact their performance. Proper solar panel orientation and solar panel direction allow your solar system to generate ...

[Solar Panel Roof Requirements: What You Need to Know](#)

Apr 14, 2024 · The Importance of Roof Suitability for Solar Panel Installation The roof is key when installing solar panels. Their orientation, pitch, and materials affect how much solar energy ...



[Best Placement for Solar Panels on Roof](#)

Jul 17, 2025 · To get the most out of your solar panel system, placement plays a crucial role in ensuring optimal sunlight exposure, system efficiency, and long-term savings. In this detailed ...



[Solar Panel Roof Requirements: What You ...](#)

Apr 14, 2024 · The Importance of Roof Suitability for Solar Panel Installation The roof is key when installing solar panels. Their orientation, pitch, and ...

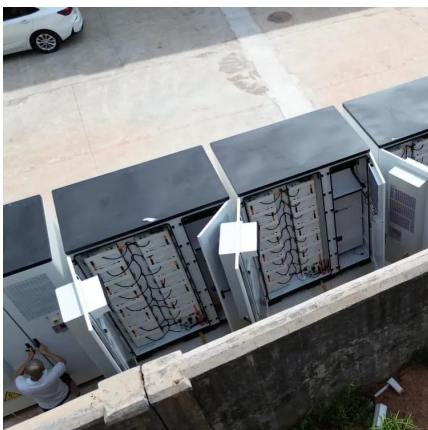


[Solar Panel Orientation: Everything You Need to Know](#)

Aug 19, 2024 · Roof pitch and roof orientation limit your options for solar panel placement and orientation, as you have to work with the existing roof structure and shape. Shading from trees ...

[Optimal Orientation for Solar Panels: Landscape vs. Portrait](#)

Wrapping Up Choosing between landscape and portrait orientation for solar panels depends on numerous factors, including roof structure, mounting system compatibility, environmental ...



[Solar Panel Direction & Orientation: 2025 Complete Guide](#)

Aug 8, 2025 · Discover the optimal direction and angle for solar panels to maximize energy output. Complete guide with calculations, tools, and location-specific recommendations for 2025.



Solar Panel Direction & Orientation: 2025 ...

Aug 8, 2025 · Discover the optimal direction and angle for solar panels to maximize energy output. Complete guide with calculations, tools, and ...



The Science Behind Roof Orientation and Solar Energy Output

3 days ago · The efficiency of solar panels is impacted by the specific characteristics of the roof on which they are installed. Two critical factors, roof orientation and tilt, play important roles in ...

Contact Us

For catalog requests, pricing, or partnerships, please visit:
<https://llsolarenergy.co.za>

Scan QR Code for More Information



<https://llolarenergy.co.za>