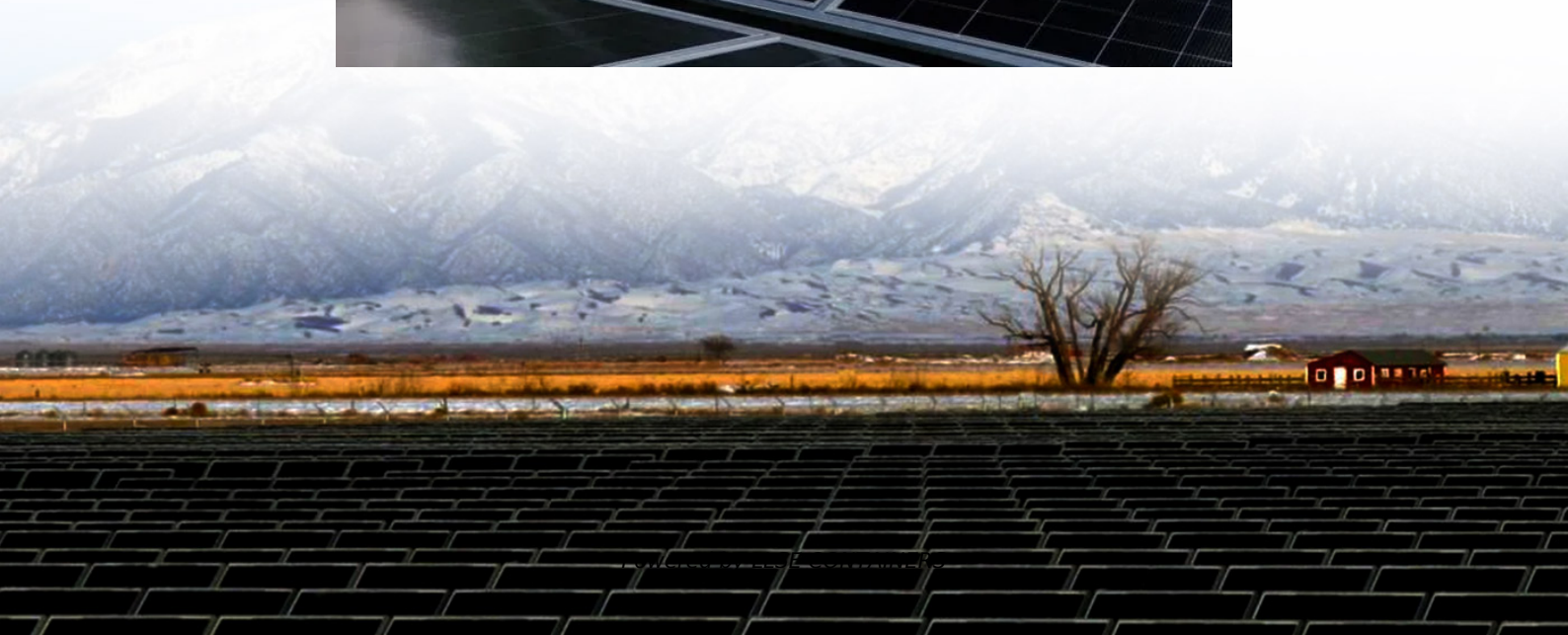


Power lines entering the base station should be avoided





Overview

Should lifting operations near overhead power lines be safe?

When it comes to lifting operations near overhead power lines, safety must always come first. The UK's Health and Safety Executive (HSE) provides clear guidance under GS6 – Avoiding danger from overhead power lines.

What precautions should be taken when working near electric overhead power lines?

The law says that any work near electric overhead power lines must be carefully planned and carried out to avoid danger from accidental contact or close proximity to the lines. The precautions necessary will depend on the nature of the work at the site and will be required even when work near the line is of short duration.

What is E of danger from overhead power lines?

E OF DANGER FROM OVERHEAD POWER LINES PE323PURPOSE This document provides guidance and sets out the arrangements that shall be followed when work near overhead power lines is to be undertaken and where there is a risk of contact with the wires. This document describes the step.

Can a plant pass under overhead power lines?

and bunting is available in HSE Guidance Note GS6.5.3.4 Where Plant May Pass Under Overhead Power Lines If it is necessary for plant working on a site to travel back and forth under overhead power lines, the area where they must pass through should be as



Power lines entering the base station should be avoided



[Safe Lifting Near Overhead Power Lines: A...](#)

Apr 7, 2025 · When it comes to lifting operations near overhead power lines, safety must always come first. The UK's Health and Safety Executive ...

[AVOIDANCE OF DANGER FROM OVERHEAD POWER ...](#)

Mar 26, 2024 · AVOIDANCE OF DANGER FROM OVERHEAD POWER LINES PE323 PURPOSE This document provides guidance and sets out the arrangements that shall be ...



IPAF Toolbox Talk A11

Mar 7, 2023 · The MEWP or its occupants inadvertently contacting power lines or entering an exclusion zone. An exclusion zone is the prescribed safety envelope area around live electrical ...

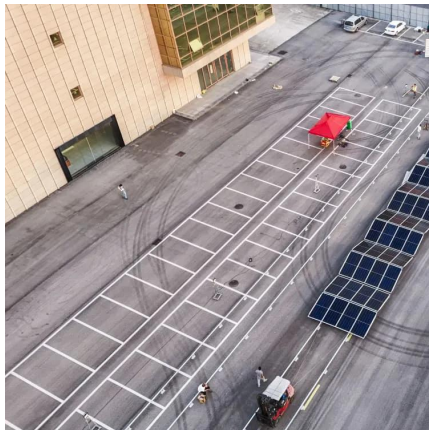
[GUIDELINES FOR WORKING IN CLOSE PROXIMITY TO ...](#)

Jul 23, 2024 · Secondary power lines located on private property in multi-family, commercial or industrial lots, as well as primary power lines located past the primary metering point, will need ...



[Safe Lifting Near Overhead Power Lines: A Guide Based on ...](#)

Apr 7, 2025 · When it comes to lifting operations near overhead power lines, safety must always come first. The UK's Health and Safety Executive (HSE) provides clear guidance under GS6 - ...



[7 Reasonable Measures for Working near Overhead Electricity Lines](#)

Dec 23, 2015 · 7 Reasonable Measures for Working near Overhead Electricity Lines The reasonable measures to ensure a safe system of work for works near O/H lines involve ...



[7 Reasonable Measures for Working near ...](#)

Dec 23, 2015 · 7 Reasonable Measures for Working near Overhead Electricity Lines The reasonable measures to ensure a safe system of work for works near O/H lines involve ...





[Electricity - overhead power lines](#)

Jul 11, 2025 · What you need to do The law says that any work near electric overhead power lines must be carefully planned and carried out to avoid danger from accidental contact or close ...



[Working Safely Near Overhead Power Lines](#)

Feb 4, 2021 · Working Safely Near Overhead Power Lines Working with or near power lines can expose workers to electrical hazards, but these dangers can be avoided through safe work ...

[Work Safely Around Electric Lines](#)

Aug 25, 2023 · Respect the Power of Electricity When you arrive at a job site, always identify power lines, poles, guy wires, and pad-mounted equipment, and point them out to your crew.



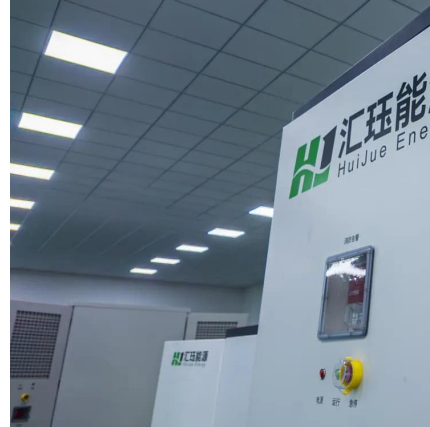
[Essential Powerline Safe Distance Guidelines ...](#)

Introduction Powerline safe distance refers to the minimum distance that individuals, machinery, and structures should maintain from overhead ...



[Working Near Overhead Power Lines Hazards ...](#)

Apr 15, 2025 · Learn the top hazards of working near overhead power lines and 10 proven safety measures to prevent accidents, injuries, and fatalities.



[Working Near Overhead Power Lines Hazards and Preventions](#)

Apr 15, 2025 · Learn the top hazards of working near overhead power lines and 10 proven safety measures to prevent accidents, injuries, and fatalities.

[Essential Powerline Safe Distance Guidelines for Optimal Safety](#)

Introduction Powerline safe distance refers to the minimum distance that individuals, machinery, and structures should maintain from overhead power lines to ensure Safety and prevent ...



Contact Us

For catalog requests, pricing, or partnerships, please visit:
<https://ilsolarenergy.co.za>



Scan QR Code for More Information



<https://llsolarenergy.co.za>