

Maximum current of battery cabinet charging and discharging





Overview

What is the maximum charge/discharge of a battery?

Two 5.12/5.32kWh batteries have a continuous discharge of 100A. This means that the maximum charge/discharge is limited to the 90A of the inverter. Other Current Limiting Factors Your current should also be suitable for the rated current of your battery cables.

Why does a battery need a maximum charge current?

Max charge current allows the high performance of a battery. It prevents the chemical and physical stresses commonly due to exceeding the current limit during charging. Thus, the battery maintains the charging speed and enhances its efficiency. A specific voltage limit is required to charge the battery, affecting the battery's health efficiently.

What is the maximum charge current of a battery?

Generally, the Maximum Charging current of the batteries is 0.1C or 0.5C to 1C. In other words, the battery can accept the charge current ranges from a minimum of 100mA to a maximum of 400mA. Max charge current prevents battery destruction, ensuring its safe and proper charging. Consequently, it helps in enhancing the lifespan of the battery.

Why is max charge current important?

Max charge current prevents the battery from overheating and thus increases lifespan and ensures safety. Max charge current plays a crucial role in enhancing the lifespan of the batteries. Charging the battery above the max charge current limit can destroy its internal components. As a result, the battery can lose its functioning.



Maximum current of battery cabinet charging and discharging

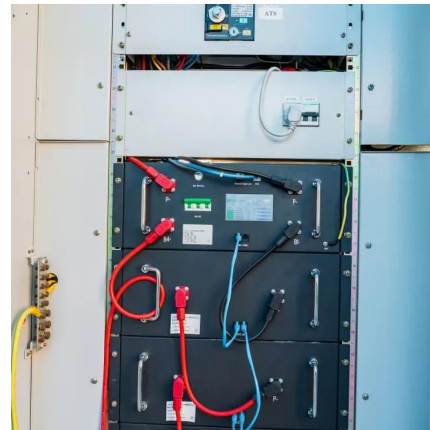


Selecting Battery Charge/Discharge Rates

When selecting the charge and discharge current limits you will always be limited to the lowest current value whether that is the inverter or the batteries. For example, the 3.6kW Ecco ...

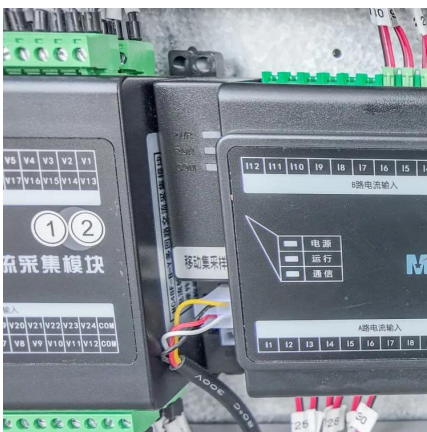
Maximum current of battery cabinet charging and discharging

A Review on Fast Charging/Discharging Effect in Lithium-Ion An optimized high current charging/discharging protocol aims to reduce the charging time/supply high power for a short ...



The role and impact of max charge current

Feb 15, 2024 · Ensure high performance Max charge current allows the high performance of a battery. It prevents the chemical and physical stresses commonly due to exceeding the current ...



Battery Charging & Discharging: 10 Key Parameters Explained

Mar 19, 2025 · Confused about battery performance? We break down 10 vital battery charging and discharging parameters. Optimize your battery life today!



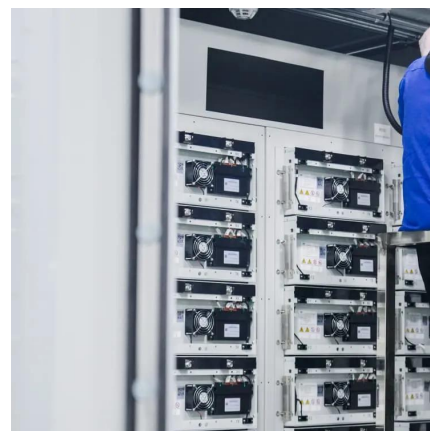
Battery operating limits

Nov 3, 2025 · Maximum charging and discharging current: with Li-Ion batteries, the specified values are usually close to the capacity, i.e you can discharge it in one hour. In batteries used ...



What is the maximum discharging current of a rack

Oct 29, 2025 · Conclusion In conclusion, the maximum discharging current is a crucial parameter to consider when choosing a rack-mounted battery. It determines the battery's ability to power ...



Contact Us

For catalog requests, pricing, or partnerships, please visit:
<https://ilsolarenergy.co.za>



Scan QR Code for More Information



<https://llolarenergy.co.za>