

# **Maximum current for charging and discharging energy storage batteries**





## Overview

---

What is the maximum charge/discharge of a battery?

Two 5.12/5.32kWh batteries have a continuous discharge of 100A. This means that the maximum charge/discharge is limited to the 90A of the inverter. Other Current Limiting Factors Your current should also be suitable for the rated current of your battery cables.

What does discharge rate mean on a battery?

The discharge rate indicates how quickly a battery can safely deliver energy. Like the charge rate, it's expressed as a multiple of the battery's capacity. 1C Discharge Rate: Discharging a 2000mAh battery at 2000mA. 2C Discharge Rate: Discharging the same battery at 4000mA.

What percentage of a battery should be discharged?

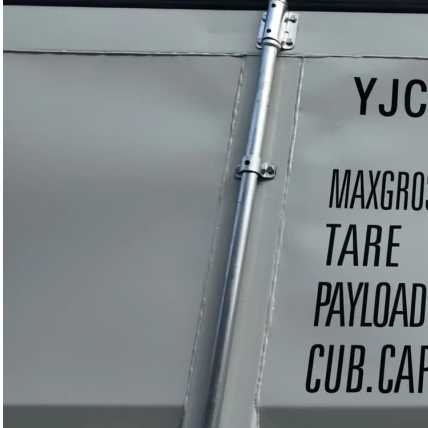
Shallow Discharge: Using only 20–30% of the battery's capacity. Deep Discharge: Using 80–100% of the battery's capacity. Deeper discharges can shorten the battery's lifespan. For example, a battery cycled at 80% DoD may last only 500 cycles, while the same battery cycled at 20% DoD could last 2000 cycles.

Do high discharge rates affect battery life?

High discharge rates are essential for power-hungry devices like drones or RC cars. However, consistently discharging at high rates can reduce the battery's lifespan. Pro Tip: Match the battery's discharge rate to your device's power requirements to avoid overloading the battery.



## Maximum current for charging and discharging energy storage batt

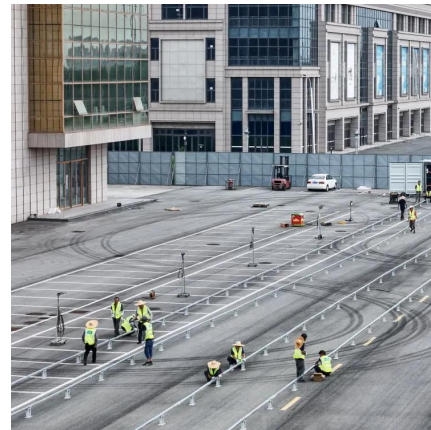


### [Mobile Battery Energy Storage System for Flexible Smart Power](#)

1 day ago · MAX POWER BCH Series mobile energy storage enables "slow charge, fast discharge" operation with 400-600kW capacity. It stabilizes power plant output and achieves ...

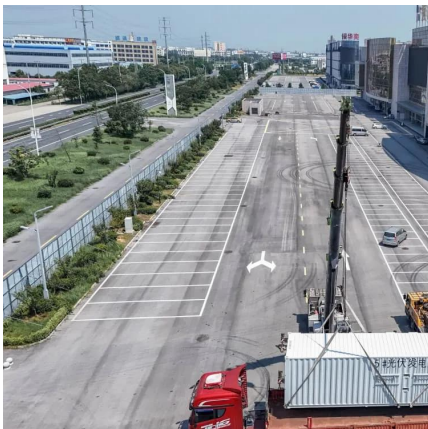
### [Energy storage battery discharge current standard table](#)

The accurate estimation of lithium-ion battery state of charge (SOC) is the key to ensuring the safe operation of energy storage power plants, which can prevent overcharging or over ...



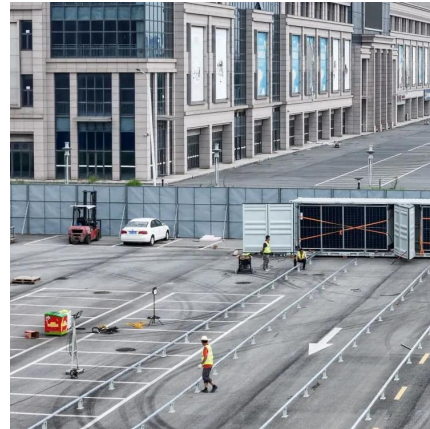
### [What is the maximum discharging current for ...](#)

May 22, 2025 · What is the maximum discharging current for a lithium solar battery? As a supplier of lithium solar batteries, I often encounter ...



### [Key Parameters of Energy Storage Batteries ...](#)

C is used to represent the rate capability of battery charging and discharging.  
 $\text{Charge/Discharge Rate} = \frac{\text{Charge/Discharge Current}}{\text{Rated Capacity}}$  For ...



### [What is the maximum discharging current for a lithium solar battery?](#)

May 22, 2025 · What is the maximum discharging current for a lithium solar battery? As a supplier of lithium solar batteries, I often encounter questions from customers regarding the maximum ...

### [Selecting Battery Charge/Discharge Rates](#)

When selecting the charge and discharge current limits you will always be limited to the lowest current value whether that is the inverter or the ...



### [Battery Energy Storage System Evaluation Method](#)

Jan 30, 2024 · Executive Summary This report describes development of an effort to assess Battery Energy Storage System (BESS) performance that the U.S. Department of Energy ...





### [Battery Charging & Discharging: 10 Key ...](#)

Mar 19, 2025 · Whether you are an engineer designing power systems, a solar energy enthusiast, or just someone looking to get the most out of ...



### [Battery Charging & Discharging: 10 Key Parameters Explained](#)

Mar 19, 2025 · Whether you are an engineer designing power systems, a solar energy enthusiast, or just someone looking to get the most out of your batteries, this guide will break down the 10 ...



### [Basics of BESS \(Battery Energy Storage System](#)

May 8, 2025 · Basic Terms in Energy Storage Cycles: Each number of charge and discharge operation C Rate: Speed or time taken for charge or discharge, faster means more power. ...



### [Selecting Battery Charge/Discharge Rates](#)

When selecting the charge and discharge current limits you will always be limited to the lowest current value whether that is the inverter or the batteries. For example, the 3.6kW Ecco ...



### [Technical Parameters and Management of Lithium Batteries in Energy](#)

Jan 14, 2025 · Learn about the key technical parameters of lithium batteries, including capacity, voltage, discharge rate, and safety, to optimize performance and enhance the reliability of ...

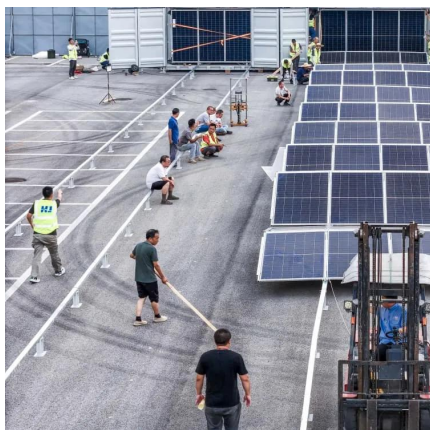


### [Key Parameters of Energy Storage Batteries Explained](#)

C is used to represent the rate capability of battery charging and discharging.  
Charge/Discharge Rate = Charge/Discharge Current / Rated Capacity For example: For a battery with a rated ...

### [Technical Parameters and Management of Lithium...](#)

Jan 14, 2025 · Learn about the key technical parameters of lithium batteries, including capacity, voltage, discharge rate, and safety, to optimize performance and enhance the reliability of ...



### [30-35kW Solis Three Phase High-voltage Energy Storage ...](#)

The Solis S6-EH3P (30-35)K-H-LV (21A) series,three-phase energy storage inverter is tailored for commercial PV energy storage systems, applicable to 3? 220V/230V grid. The inverter ...



## Contact Us

---

For catalog requests, pricing, or partnerships, please visit:  
<https://llsolarenergy.co.za>

### Scan QR Code for More Information



<https://llsolarenergy.co.za>