

Manila Solar Container Two-Way Charging Purchase Link





Overview

Does mober have a solar charging hub?

Its initial hub spanned 800 square meters and had 30 charging units. To further its sustainability goals, Mober is exploring the addition of solar photovoltaic (PV) panels and a 500 kWh battery energy storage system (BESS) at Central Charge.

Why did mober launch central charge in Pasay City?

Mober Founder and CEO Dennis Ng emphasized the importance of the launch of Central Charge in furthering the country's efforts towards green mobility. "We are proud to launch the biggest commercial EV charging hub in the Philippines in Pasay City."

Can CCS2 type 2 vehicles charge at Shell recharge?

Only CCS2-TYPE 2 vehicles can charge. How much is charging at Shell Recharge?

For our destination/mall locations, prices are available at Evro mobile app. For our forecourt locations, we charge P35 per kWh for 180kWh Ultra-rapid charging & P28 per kWh for AC22 slow charging. Where are your locations?

.

How many EV charging hubs does ng have?

Ng also announced plans to expand with two additional EV charging hubs —Northern Volt in the north and Southern Spark in the south— on properties ranging from 6,000 to 10,000 square meters.



Manila Solar Container Two-Way Charging Purchase Link



[Manila Energy Storage Charging Station Powering Tomorrow ...](#)

SunContainer Innovations - Summary: Discover how Manila's energy storage charging stations combine cutting-edge battery technology with renewable energy integration. Learn about their ...

[Mober Powers the Future of Green Logistics with Central Charge](#)

Mar 15, 2025 · "With Central Charge, we're not just charging trucks--we're charging forward toward a more sustainable future, proving that the Philippines can lead the way in green ...



[Mober launches Philippines' largest commercial EV charging ...](#)

Mar 10, 2025 · A glimpse at Mober's Central Charge EV commercial charging hub (Dexter Barro II/MANILA BULLETIN) Green logistics startup Mober unveiled on Monday, March 10, the ...

Mober makes bold move for sustainability with PH's biggest EV charging

Mar 10, 2025 · Mober, the pioneer in green logistics in the Philippines, has launched the country's largest electric vehicle (EV) charging



hub, further cementing its commitment to sustainable ...

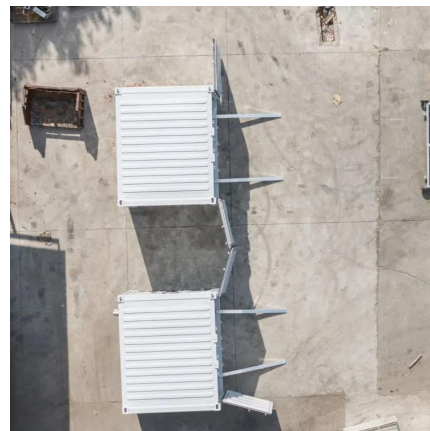


[Largest EV charging hub to accelerate shift to greener logistics](#)

Mar 10, 2025 · MANILA - Electric vehicle (EV) logistics company Mober launched Central Charge on Monday, the largest commercial EV charging hub in the Philippines, marking a major step ...

[Mober opens PH's largest EV charging hub](#)

Mar 10, 2025 · The expansion comes after Mober inaugurated its first charging hub in Zamora Street, Pasay City, in 2023. Its initial hub spanned 800 sqm and had 30 charging units. To ...



[Mober opens Philippines' largest EV charging hub](#)

Mar 10, 2025 · Mober opens Philippines' largest EV charging hub Mober, a logistics company focused on EVs, has opened the Philippines' largest commercial EV charging hub, Central ...



Philippine EV logistics firm Mober opens largest commercial EV charging

Mar 18, 2025 · Equipped with 50 7kW DC chargers and two 60kWh fast-charging units, Central Charge enables Mober to streamline operations and minimize vehicle downtime. Central ...



Contact Us

For catalog requests, pricing, or partnerships, please visit:
<https://llsolarenergy.co.za>

Scan QR Code for More Information



<https://llsolarenergy.co.za>