

Maintaining Lithium-ion Batteries for solar container communication stations





Overview

How should a lithium ion battery be charged before storage?

Before storage, lithium-ion batteries should be charged to the recommended state of charge (SoC) using a reliable battery management system or intelligent charger. Disconnecting the battery from the charger after reaching the desired SoC is essential to prevent overcharging.

How to store lithium ion batteries safely?

Regular voltage and state of charge tests should be conducted, the storage environment should be monitored for temperature and humidity levels, Battery Management System (BMS) firmware should be updated, and any signs of physical damage should be immediately addressed. What safety measures should be taken for storing lithium-ion batteries?

.

Can lithium-ion batteries be used for energy storage?

Novelty relies on IoT, mid-scale LiB, alerts, real conditions and interoperability. Long-term (two years) experimental results prove the suitability of the proposal. Energy storage through Lithium-ion Batteries (LiBs) is acquiring growing presence both in commercially available equipment and research activities.

Why do telecom base stations need a battery management system?

As the backbone of modern communications, telecom base stations demand a highly reliable and efficient power backup system. The application of Battery Management Systems in telecom backup batteries is a game-changing innovation that enhances safety, extends battery lifespan, improves operational efficiency, and ensures regulatory compliance.



Maintaining Lithium-ion Batteries for solar container communication



[IoT real time system for monitoring lithium-ion battery long ...](#)

Jul 1, 2022 · Energy storage through Lithium-ion Batteries (LiBs) is acquiring growing presence both in commercially available equipment and research activities. Sm...

[Maintaining Rack Lithium Batteries in Solar and Telecom ...](#)

Maintaining rack lithium batteries in solar and telecom setups requires regular voltage checks ($\pm 2\%$ of 48V nominal), BMS monitoring, and thermal management (15-30°C optimal). ...



[Ultimate Guide to Solar Battery Maintenance: Maximize ...](#)

May 6, 2025 · Discover expert solar battery maintenance tips to extend battery life, prevent damage, and boost performance. Learn best practices for 2025, from cleaning to BMS setup.



[White Paper on Lithium Batteries for Telecom Sites](#)

Apr 7, 2025 · Preface Building a high-quality and reliable battery infrastructure for telecom networks In the digital era, lithium-ion batteries (lithium batteries for short) have become a ...



A REVIEW OF THERMAL MANAGEMENT FOR LI ION BATTERIES

Land type for lead-acid batteries in communication base stations The global Battery for Communication Base Stations market size is projected to witness significant growth, with an ...



Battery Management Systems for Telecom Base Backup Batteries

Mar 17, 2025 · Their superior performance is driving increased adoption in modern telecom backup systems. Backup batteries ensure that telecom base stations remain operational even ...



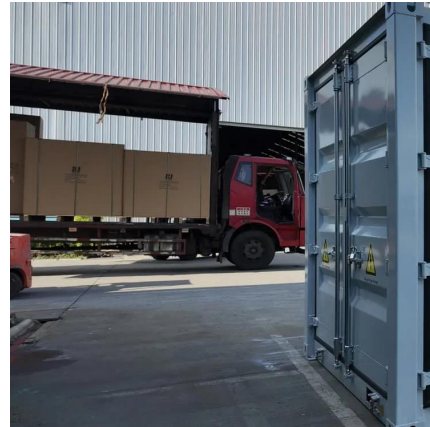
Complete Guide: Lithium-ion Battery Storage & Maintenance

Apr 19, 2024 · Complete guide for lithium-ion battery storage, including optimal temperature conditions, long-term storage guidelines, safety measures, and transportation tips.



Discharge rate of solar container battery in communication ...

Why do cellular base stations have backup batteries? Abstract: Cellular base stations (BSs) are equipped with backup batteries to obtain the uninterruptible power supply (UPS) and maintain ...



Contact Us

For catalog requests, pricing, or partnerships, please visit:
<https://llsolarenergy.co.za>

Scan QR Code for More Information



<https://llsolarenergy.co.za>