

Lithium iron phosphate battery station cabinet is soft





Overview

Do lithium iron phosphate batteries self-discharge?

Lithium Iron Phosphate batteries will slowly self-discharge when not in use or whilst in storage. The battery run time drops below 80% of the original run time. The battery charge time increases significantly. If necessary, clean the Li-Ion battery with a soft, dry cloth. Never use liquids, solvents, or abrasives to clean the Li-Ion battery.

What is lithium iron phosphate (LiFePO₄)?

Lithium Iron Phosphate (LiFePO₄) battery cells are quickly becoming the go-to choice for energy storage across a wide range of industries.

What is 48 V series lithium iron phosphate battery system?

48 V series lithium iron phosphate battery system has been designed to provide power backup for remote or outside telecom plants like Access Terminals, Base Transceiver Stations, and Base Station Controllers. This system has the characteristics of high system integration, well reliability, long service life, and wide operating temperature range.

Are soft-pack lithium batteries a safety hazard?

In a safety hazard, the soft-pack battery will only bulge and crack at most. The difference between soft-packed lithium batteries and hard-packed lithium batteries mainly refers to the material of the lithium battery pack shell. If there is a package on the outside, it is not easy to see. The battery body must be seen.



Lithium iron phosphate battery station cabinet is soft



Design and Application of Station Power Supply System for Lithium Iron

Nov 1, 2023 · The design scheme of the lithium iron phosphate power supply system is formulated, and the matching battery management system is designed.

Lithium Battery Energy Storage Cabinet

Industrial / Commercial Energy Storage System
Technology: Lithium Iron Phosphate (LiFePO₄)
Voltage: 716.8V -614.4V-768V-1228.8V Capacity:
280Ah Cycle life: >= 6000 times Operation ...



Integrated Energy Storage Cabinet

The Cabinet offers flexible installation, built-in safety systems, intelligent control, and efficient operation. It features robust lithium iron phosphate ...



What is the difference between the soft pack and hard pack lithium ...

Aug 1, 2025 · In addition, the finished product is simple, reliable and cost-effective. The above is the difference between soft-pack and hard-pack lithium-iron batteries. Juda has been ...



[Everything You Need to Know About LiFePO4 Battery Cells: A](#)

6 days ago · Complete Guide to LiFePO4 Battery Cells: Advantages, Applications, and Maintenance Introduction to LiFePO4 Batteries: The Energy Storage Revolution Lithium Iron ...



[What is the difference between the soft pack ...](#)

Aug 1, 2025 · In addition, the finished product is simple, reliable and cost-effective. The above is the difference between soft-pack and hard-pack ...



[Safety study of soft pack lithium iron phosphate batteries ...](#)

Sep 29, 2024 · In recent years, lithium battery explosion and fire accidents caused by collisions of new energy electric vehicles have occurred frequently, and the safety performance of lithium ...





[Design and Application of Station Power ...](#)

Nov 1, 2023 · The design scheme of the lithium iron phosphate power supply system is formulated, and the matching battery management system is ...



[What's a LiFePO4 Pouch Cell? Full ...](#)

Apr 27, 2025 · Part 1. What is a LiFePO4 pouch cell? First things first: a LiFePO4 pouch cell is a lithium battery that uses lithium iron phosphate ...

Application Manual

Dec 11, 2020 · 48 V series lithium iron phosphate battery system has been designed to provide power backup for remote or outside telecom plants like Access Terminals, Base Transceiver ...



[What's a LiFePO4 Pouch Cell? Full Comparison and Buying Tips](#)

Apr 27, 2025 · Part 1. What is a LiFePO4 pouch cell? First things first: a LiFePO4 pouch cell is a lithium battery that uses lithium iron phosphate (LiFePO4) as its cathode material. Unlike ...



[What Is A Soft Pack Lithium Iron Phosphate ...](#)

Dec 16, 2022 · A soft pack lithium iron phosphate battery is essentially a liquid lithium-ion battery encased in a layer of polymer shell. It is ...



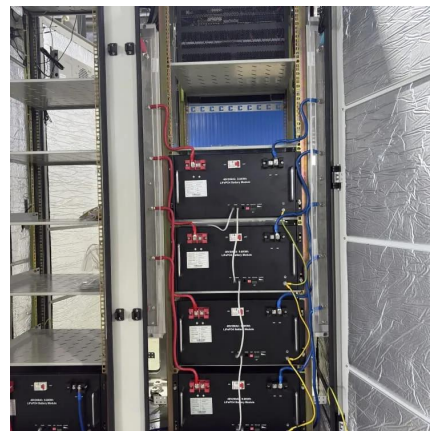
[What Is A Soft Pack Lithium Iron Phosphate \(LiFePO4\) Battery](#)

Dec 16, 2022 · A soft pack lithium iron phosphate battery is essentially a liquid lithium-ion battery encased in a layer of polymer shell. It is packaged using an aluminum-plastic film and, in the ...



[Lithium iron phosphate battery energy storage container](#)

Jan 30, 2024 · What is a Narada NEPs LFP high capacity lithium iron phosphate battery?,while delivering exceptional warranty,safety,and life. Whether used in cabinet,container or building ...



[Integrated Energy Storage Cabinet](#)

The Cabinet offers flexible installation, built-in safety systems, intelligent control, and efficient operation. It features robust lithium iron phosphate (LiFePO4) batteries with scalable ...





Contact Us

For catalog requests, pricing, or partnerships, please visit:
<https://llsolarenergy.co.za>

Scan QR Code for More Information



<https://llsolarenergy.co.za>