





Overview

Who should use a single-phase inverter?

Single-phase inverters are ideal for smaller solar systems, especially in private households. They are ideal for: Private households: Single-family homes and small apartments with moderate power consumption. Small commercial enterprises: Offices, stores or workshops with manageable energy requirements.

Can a single phase inverter be used in a 1 phase system?

The use of single-phase inverters in such environments can lead to overloads, power losses or inefficient operation. 1-phase systems only supply the grid via a single phase, which can lead to imbalances during higher load peaks and greater consumption.

What is a 1 phase solar inverter?

1-phase inverters are designed for smaller systems with an output of up to around 10 kW. For larger solar systems that need to generate more electricity, they quickly reach their technical limits. If the energy requirement exceeds this range, single-phase inverters can no longer provide the power efficiently.

What is a single-phase inverter?

Single-phase inverters convert the direct current (DC) generated by solar modules into grid-compliant alternating current (AC). They are particularly suitable for smaller photovoltaic systems in private households or small commercial applications with an energy requirement of up to around 10 kW.



Kosovo inverter single phase

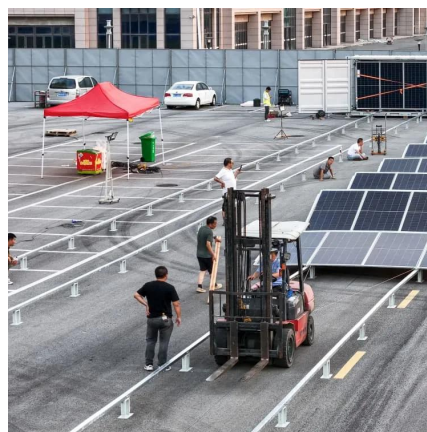


[Fronius Primo LITE 10kW Solar Inverter Single Phase Kosovo ...](#)

The transformerless, single-phase Fronius Primo Lite is the ideal solar inverter for residential applications with a 208/240 grid connection, boasting a wide input voltage range, dual MPPT ...

[SolaX X1-LITE LV , Single phase Low Voltage hybrid inverter](#)

Nov 5, 2025 · The SolaX X1-LITE LV single phase low voltage hybrid inverter from SolaX Power is available in multiple models with power ratings of 8kW, 10kW, and 12kW. The low startup ...



[MUST Low Frequency Pure Sine Wave Inverter EP3000 PLUS ...](#)

Must Low Frequency Pure Sine Wave Inverter Ep3000 Plus 2kw 2000w 12v 220v Power Inverter In Kosovo, Find Complete Details about Must Low Frequency Pure Sine Wave Inverter ...



[Single Phase String Inverter , Deye Single Phase On-grid Inverter](#)

Deye is leading single phase inverter manufacturer. This Single Phase on-grid solar string inverter is applicable to single and multiple alignments rooftop. Maximum power models at



Deye Inverter.



Contact Us

For catalog requests, pricing, or partnerships, please visit:
<https://llsolarenergy.co.za>

Scan QR Code for More Information



<https://llsolarenergy.co.za>