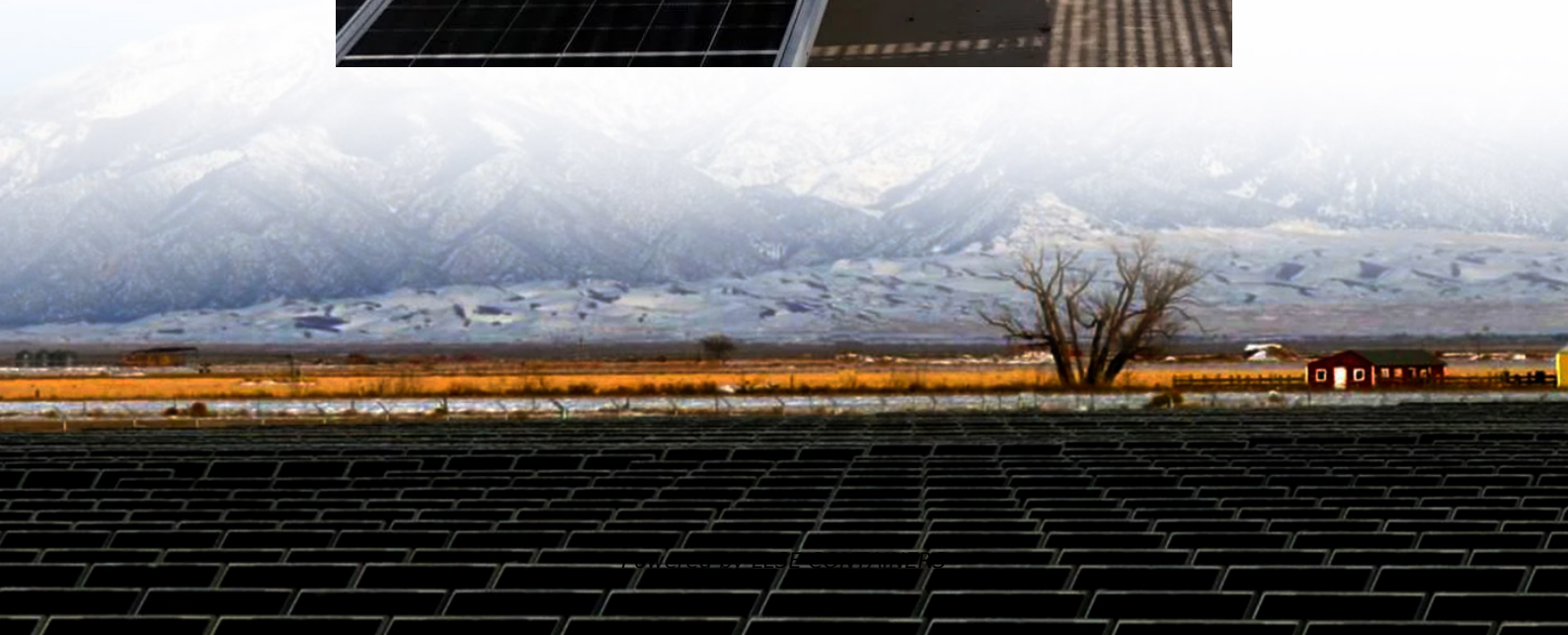


Inverter three-phase voltage range





Overview

What is a 3 phase inverter system?

A three-phase inverter system is operating at an output power level ranging from 10kW to above 300kW, used in commercial and decentralized utility-scale applications. High output power can be realized through stacking multiple medium-power blocks.

What is a three-phase string inverter system?

Three-phase string inverter systems convert the DC power generated by the photovoltaic (PV) panel arrays into the AC power fed into a 380 V or higher three-phase grid connection.

What is a three-phase voltage source inverter (VSI) with SPWM?

A three-phase Voltage Source Inverter (VSI) with SPWM (Sinusoidal Pulse Width Modulation) is a type of inverter that converts DC voltage into three-phase AC voltage with sinusoidal waveforms. It works by varying the pulse width of a high-frequency carrier signal according to the instantaneous amplitude of a reference sinusoidal waveform.

What is a three-phase inverter reference design?

Three-phase inverter reference design for 200-480VAC drives (Rev. A) This reference design realizes a reinforced isolated three-phase inverter subsystem using isolated IGBT gate drivers and isolated current/voltage sensors.



Inverter three-phase voltage range



[What is Three Phase Inverter?](#)

Nov 6, 2024 · A common three-phase inverter series accepts a phase voltage range of 170-280V and a line voltage range of 305-485V during the AC to DC conversion. In this context, a three ...

[Three Phase Voltage Source Inverter with SPWM](#)

Oct 27, 2024 · Introduction A three-phase Voltage Source Inverter (VSI) with SPWM (Sinusoidal Pulse Width Modulation) is a type of inverter that converts DC voltage into three-phase AC ...

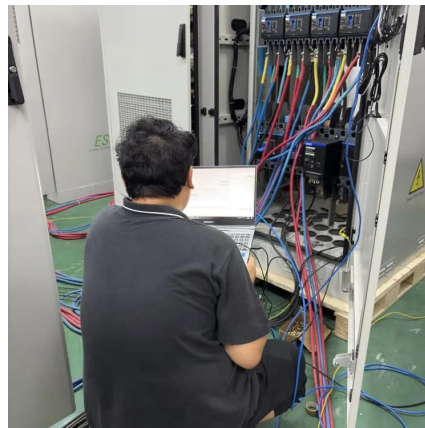


[Three-phase inverter reference design for 200-480VAC ...](#)

May 11, 2022 · Three-phase inverter reference design for 200-480 VAC drives with opto-emulated input gate drivers Description This reference design realizes a reinforced isolated three-phase ...

[Three-Phase String Inverter Systems Overview](#)

Oct 25, 2023 · A three-phase inverter system is operating at an output power level ranging from 10kW to above 300kW, used in commercial and decentralized utility-scale applications. High ...



30-35kW Solis Three Phase High-voltage Energy Storage Inverter

The Solis S6-EH3P (30-35)K-H-LV (21A) series, three-phase energy storage inverter is tailored for commercial PV energy storage systems, applicable to 3 \times 220V/230V grid. The inverter ...



What is the input voltage range of an on grid three phase ...

At our company, we offer a wide range of on grid three phase solar inverters with different input voltage ranges to meet the needs of our customers. Whether you're looking for a high-voltage ...



Three-Phase Buck-Boost Y-Inverter with Wide DC Input ...

Sep 11, 2019 · A promising three-phase inverter topology towards highly efficient low voltage inverters for fuel-cell applications is presented within this paper. The Y-inverter is comprised of ...





Contact Us

For catalog requests, pricing, or partnerships, please visit:
<https://llsolarenergy.co.za>

Scan QR Code for More Information



<https://llsolarenergy.co.za>