

# **Inverter grid connection requirements**





## Overview

---

What are the requirements for a IPSD inverter?

Inverters used with IPSDs must be tested to AS/NZS 4777.2. Systems over 30 kVA require interface protection. Must island in under 2 seconds upon loss of grid connection. Signage and protective measures (like securing current transformers, system schematics) required at the main switchboard.

Can a multiple mode inverter disconnect a grid-interactive port?

(e) The connection or reconnection time and behaviour shall conform to Clause 4.7. (g) Where the device under test is a multiple mode inverter meeting the performance classification for output requirements of AS IEC 62040.3, it may disconnect the grid-interactive port during this step.

What is an inverter energy system?

Inverter energy systems are often comprised of multiple inverters used in combination to provide the desired inverter energy system capacity or to ensure that voltage balance is maintained in multiple-phase connections to the grid.

Can a PV inverter be disconnected from a grid?

Some properties of a PV inverter grid connection can cause the grid voltage at the inverter to increase and exceed the permissible operating range if the feed power is high. If this occurs, SMA grid guard, an independent disconnection device integrated into the inverter, will safely disconnect the inverter from the grid.



## Inverter grid connection requirements

---

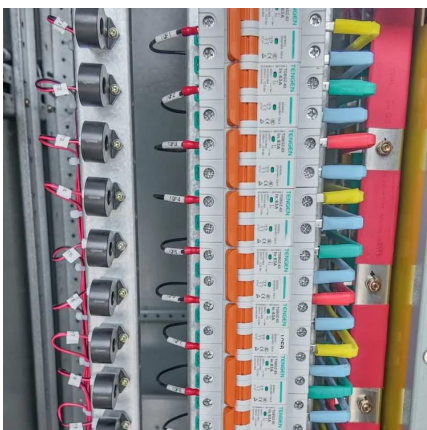


### [Our Summary : AS/NZS 4777.1:2024 - Grid ...](#)

Stakeholders involved in specifying, installing, or maintaining grid-connected inverters should carefully review these changes and ensure full ...

### What are the grid

Nov 18, 2025 · Electrical Characteristics Compatibility The first and foremost requirement for grid - connection is the compatibility of electrical characteristics between the three - phase string ...



### [Grid Connected Multiple Mode Inverters](#)

Nov 20, 2025 · There are two supply types related to grid connected multiple mode inverters (also known as hybrid inverters) used with photovoltaic (PV) and BESS described in AS/NZS 4777.1 ...

### [Our Summary : AS/NZS 4777.1:2024 - Grid Connection of ...](#)

Stakeholders involved in specifying, installing, or maintaining grid-connected inverters should carefully review these changes and ensure full compliance with AS/NZS 4777.1:2024, AS/NZS ...





### [PV grid-connected inverter certification rules](#)

Feb 17, 2024 · Can grid-connected PV inverters improve utility grid stability? ximizing power extraction from the PV modules. While maximizing power transfer remains a top priority, utility ...



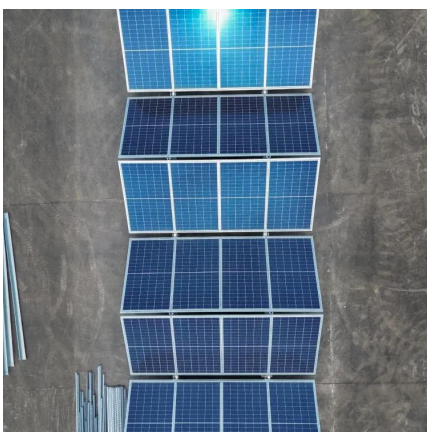
### [Technical Design Notes for Grid Connection of Small...](#)

Apr 12, 2022 · (for FiT Scheme) The following table provides technical information for inverter-based RE Systems with generation capacity of up to 1MW and non-inverter-based RE ...



### [Standard AS/NZS 4777.1 Frequently Asked Questions](#)

In August 2024, Standards Australia released a new version of AS/NZS 4777.1 Grid connection of energy systems via inverters Part 1: Installation requirements (AS/NZS 4777.1:2024).





## National Connection Guidelines

Changes to Inverter Installation Standards In August 2024, Standards Australia released a new version of AS/NZS 4777.1 Grid connection of energy systems via inverters Part 1: Installation

...



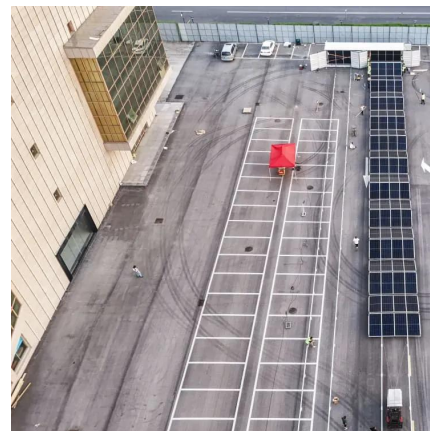
## Grid connection of energy systems via inverters

May 4, 2022 · Grid connection of energy systems via inverters, Part 2: Inverter requirements (a) differences Revision between this and the previous edition include but are not limited to the

...

## **Grid Connection**

Sep 27, 2022 · Grid voltage at the grid connection point (without feed power), Grid impedance at the terminal of the inverter, Applicable conditions regarding inverter-based grid monitoring in ...



## **Contact Us**

---

For catalog requests, pricing, or partnerships, please visit:  
<https://llsolarenergy.co.za>



## Scan QR Code for More Information



<https://llsolarenergy.co.za>