

Inverter connected to the grid box





Overview

How does a grid-tie inverter work?

The grid-tie inverter is configured to a solar meter which later connects to the mains. The meter is used to calculate excess energy from the inverter grid, later stored in a utility grid for future consumption.

How do you connect a grid inverter?

Most people prefer the series connection from on-grid panels because it significantly increases the voltage received by the grid inverter. To do that, you should connect the first panel's positive terminal to the second panel's negative terminal, which connects to the third panel's positive terminal and continues the process.

Can a hybrid inverter work on a grid?

Yes, for readers having doubts about can hybrid inverter work on grid, yes, a hybrid inverter can work on a grid. In fact, one of the main functions of a hybrid inverter is to be able to connect to the grid and feed excess energy generated by the solar panels back into the grid.

How does an on-grid inverter work?

For an on-grid system, you will not be using batteries. Thus, unlike the off-grid systems, you will connect the inverter directly to the grid. Plug it into the main power switchboard to join the grid, which acts as the input wire. The other wire, which acts as the output wire, connects to the switchboard, which supplies the current.



Inverter connected to the grid box

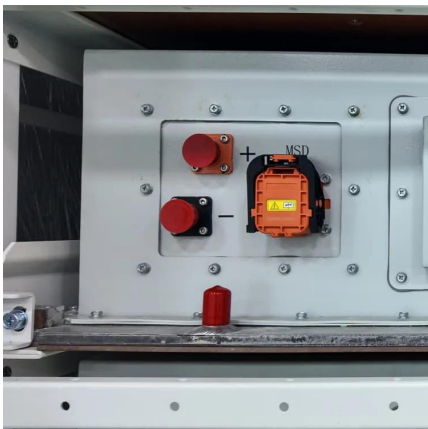
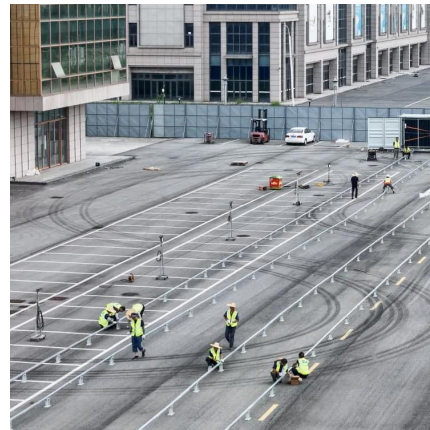


[Solar Integration: Inverters and Grid Services Basics](#)

1 day ago · More advanced grid-forming inverters can generate the signal themselves. For instance, a network of small solar panels might designate one of its inverters to operate in grid ...

[How to Connect a Hybrid Solar Inverter: A Step-by-Step ...](#)

Mar 4, 2024 · This ensures uninterrupted power supply during both sunny and cloudy days, reducing your reliance on the grid and maximizing energy savings. Let explore how to connect ...



[How Solar Inverter is Connected to the Grid](#)

Apr 18, 2025 · The author recently installed a complex solar-battery system. Learn how solar inverter is connected to the grid and how each inverter functions when connected or not ...

[How To Set Up A Grid-Connected Micro Inverter Solar System?](#)

Dec 17, 2024 · This comprehensive guide provides a step-by-step guide for installing grid-tied solar systems with micro inverters. It covers solar panel wiring, grounding, DC cable sizing, ...



[How Does a Solar Inverter Synchronize with Grid? Tips Inside](#)

Jul 9, 2025 · Ever wonder how solar power blends so smoothly with the grid? That's where the solar inverter steps in. It doesn't just convert energy--it actively syncs your solar system with ...



[How to Connect Hybrid Inverter to Grid?](#)

Mar 2, 2024 · A hybrid solar inverter can be connected to the grid and can feed excess energy generated by the solar panels back into the grid. This allows homeowners to earn credits and ...



[Connecting an On-Grid Solar Inverter: A Comprehensive Guide](#)

Jun 26, 2024 · On-grid solar inverters are crucial for converting the direct current (DC) generated by solar panels into alternating current (AC) used by household appliances or fed back into the ...





Connecting Inverter to Distribution Box: Essential Safety Tips

6 days ago · The inverter output is connected to one of the ATS inputs, while the other input comes from the utility grid. The ATS output is then directed to a distribution box (DB) or ...



How To Set Up A Grid-Connected Micro Inverter Solar ...

Dec 17, 2024 · This comprehensive guide provides a step-by-step guide for installing grid-tied solar systems with micro inverters. It covers solar panel wiring, grounding, DC cable sizing, ...

Contact Us

For catalog requests, pricing, or partnerships, please visit:
<https://lsoleenergy.co.za>

Scan QR Code for More Information



<https://llolarenergy.co.za>