

Installation requirements and specifications for wind-solar complementary high-altitude solar container communication stations





Overview

What is the optimal configuration for a solar power plant?

The model achieves an optimal configuration comprising 176.03 MW of wind power, 273.71 MW of photovoltaic capacity, and 20.34 MW × 2.99 h of energy storage, fully meeting investment and land use constraints.

What is the maximum integration capacity of wind and solar power?

At this ratio, the maximum wind-solar integration capacity reaches 3938.63 MW, with a curtailment rate of wind and solar power kept below 3 % and a loss of load probability maintained at 0 %. Furthermore, under varying loss of load probabilities, the total integration capacity of wind and solar power increases significantly.

What is a capacity optimization model for a wind-solar-hydro-storage multi-energy complementary system?

This paper develops a capacity optimization model for a wind-solar-hydro-storage multi-energy complementary system. The objectives are to improve net system income, reduce wind and solar curtailment, and mitigate intraday fluctuations.

What is the maximum wind and solar installed capacity?

The results indicate that a wind-solar ratio of around 1.25:1, with wind power installed capacity of 2350 MW and photovoltaic installed capacity of 1898 MW, results in maximum wind and solar installed capacity. Furthermore, installed capacity increases with increasing wind and solar curtailment rates and loss-of-load probabilities.



Installation requirements and specifications for wind-solar complem



[Optimal Scheduling of a Cascade Hydropower Energy ...](#)

Jun 4, 2024 · By systematically scheduling cascade hydropower stations, solar power plants, wind farms, and energy storage pumping stations, it is possible to maximize the use of ...

[Research on Optimal Configuration of Wind-Solar-Storage Complementary](#)

Dec 29, 2024 · To address challenges such as consumption difficulties, renewable energy curtailment, and high carbon emissions associated with large-scale wind and solar power ...



[An in-depth study of the principles and technologies of ...](#)

Abstract. In the face of the global energy crisis and the challenges of climate change in the 21st century, there is an urgent need to shift to sustainable energy solutions. Wind-solar hybrid ...

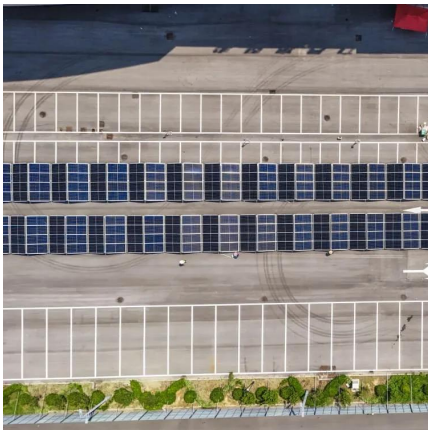
[Complementarity assessment of wind-solar energy sources ...](#)

Jul 10, 2019 · Abstract The inherent complementarity of wind and solar energy resources is beneficial to smooth aggregate power and reduce ramp reserve capacity. This article proposes ...



[Design of Off-Grid Wind-Solar Complementary Power ...](#)

Feb 29, 2024 · Currently, wind-solar complementary power generation technology has penetrated into People's Daily life and become an indispensable part [3]. This paper takes a 1500 m high ...



[Optimal Scheduling of a Cascade ...](#)

Jun 4, 2024 · By systematically scheduling cascade hydropower stations, solar power plants, wind farms, and energy storage pumping stations, it is ...



[Complementary configuration and operation of Wind-Solar ...](#)

Nov 29, 2024 · With a high percentage of renewable energy systems connected to the grid, the intermittent and volatile nature of their output adversely affects the safe and stable operation of ...





[Complementarity assessment of wind-solar ...](#)

Jul 10, 2019 · Abstract The inherent complementarity of wind and solar energy resources is beneficial to smooth aggregate power and reduce ...

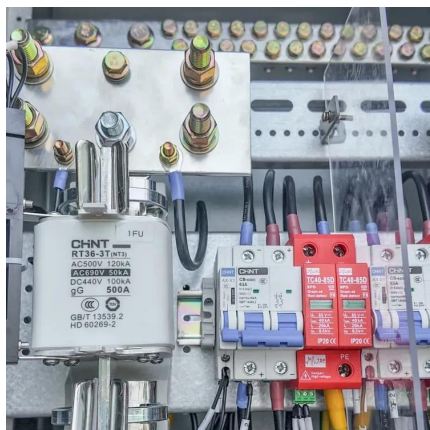


[Complementary potential of wind-solar-hydro power in ...](#)

Sep 1, 2023 · Since wind power and solar PV are specifically intermittent and space-heterogeneity, an assessment of renewable energy potential considering the variability of wind ...

[Quantitative evaluation method for the complementarity of wind-solar](#)

Feb 15, 2019 · Complementarity between wind power, photovoltaic, and hydropower is of great importance for the optimal planning and operation of a combined power sys...



[Optimal Configuration and Empirical Analysis of a Wind-Solar ...](#)

Jul 29, 2025 · Therefore, Yunnan's wind-solar-hydro-storage multi-energy complementary system architecture not only meets the engineering needs of high-proportion consumption of ...



[Optimal Design of Wind-Solar complementary power ...](#)

Dec 15, 2024 · The outer layer aims to maximize the accessible scale of wind and solar energy, while the inner layer considers the matching degree between power output and grid load. The ...



Contact Us

For catalog requests, pricing, or partnerships, please visit:
<https://llsolarenergy.co.za>

Scan QR Code for More Information



<https://llsolarenergy.co.za>