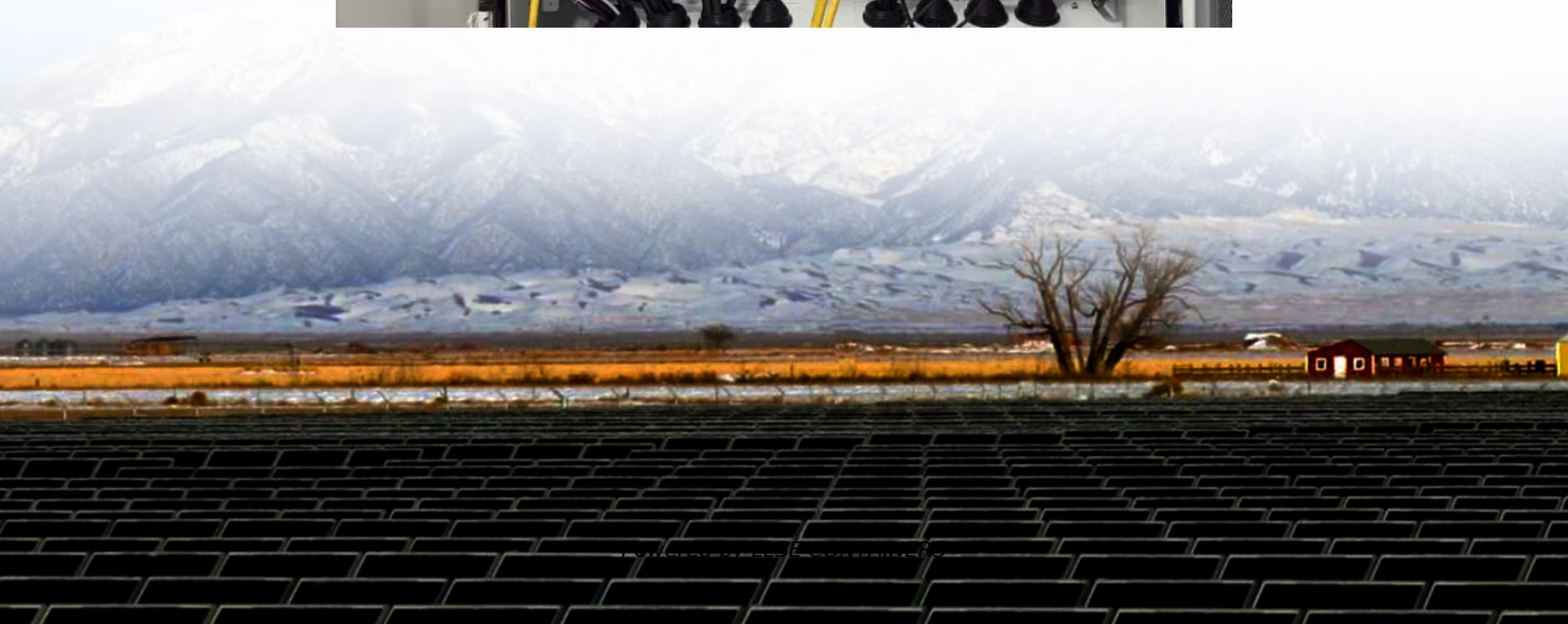
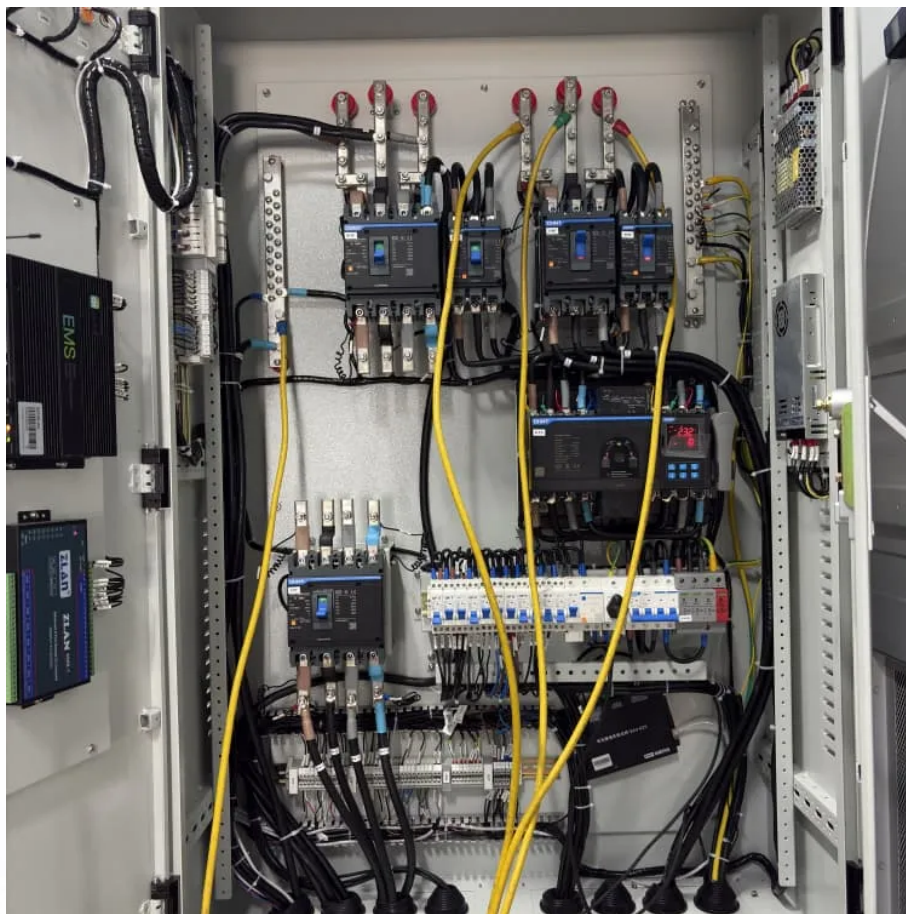


Igbt module to 220v inverter





Igbt module to 220v inverter



[How to Select the Right IGBT Module for New Energy Inverters](#)

Nov 18, 2025 · Practical guide to IGBT module selection for solar, wind and energy-storage inverters, covering voltage, losses, thermal design, protection, packaging and supply chain.

[I Make 3000W Simple 12V To 220V Inverter using IGBT ...](#)

Feb 16, 2024 · I Make 3000W Simple 12V To 220V Inverter using IGBT Mosfet ,, How to make inverter Hi, there are friends today we will make an inverter at home with Mosfet transistor and ...



[IGBT Technologies and Applications Overview: How and ...](#)

Application Overview - Half Bridge High side IGBT always commutates with low side FWD and vice versa. IGBT turn-off generates over- or undervoltage (dep. on load-current direction) ...

[Selection of IGBT modules for low-voltage inverter ...](#)

Feb 7, 2025 · Selecting the right IGBT module ensures your inverter operates efficiently and reliably. Focus on voltage, current, and switching frequency to match your application. Explore ...



[Choose Your IGBTs Correctly for Solar Inverter Applications](#)

May 18, 2025 · As can be seen in the table, a standard-speed IGBT has the lowest VCEON, but the slowest fall time compared to the other two fast and ultrafast planar IGBTs. The fourth ...



[HV-IGBT Module for High-Performance Inverter Design](#)

Aug 15, 2025 · HV-IGBT Module for High-Performance Inverter Design Learn about Mitsubishi's XB-Series HV-IGBT modules. They offer lower switching losses and enhanced reliability ...



[IGBT Modules Deliver Efficiency in Inverter Applications](#)

Aug 21, 2024 · Advanced Power Technology for Inverter Applications One of the more common topologies used in high-power applications, such as three-phase solar PV inverters, is the ...





Contact Us

For catalog requests, pricing, or partnerships, please visit:
<https://llsolarenergy.co.za>

Scan QR Code for More Information



<https://llsolarenergy.co.za>