

# Huawei Cadmium Telluride solar Glass





## Overview

---

What is cadmium telluride (CdTe) photovoltaic glass?

Cadmium Telluride (CdTe) photovoltaic glass is a type of solar photovoltaic glass that incorporates thin-film photovoltaic technology based on the semiconductor compound cadmium telluride.

What are the advantages of cadmium telluride (CdTe) thin film solar cells?

1. Introduction Cadmium Telluride (CdTe) thin film solar cells have many advantages, including a low-temperature coefficient ( $-0.25\ \%/^{\circ}\text{C}$ ), excellent performance under weak light conditions, high absorption coefficient ( $105\ \text{cm}^{-1}$ ), and stability in high-temperature environments.

Can cadmium zinc Telluride and cdmgte be used together?

The incorporation of zinc or magnesium to form cadmium zinc telluride (CdZnTe) and cadmium magnesium telluride (CdMgTe) represents a possible way to move the bandgap into a viable regime for tandem incorporation, but using these materials introduces processing challenges that have thus far prevented their use in high-throughput manufacturing.

Which window material is used in CdTe solar cells?

CdS is the most used window material in conventional CdTe solar cells, but its main drawback is that the bandgap is about 2.4 eV. Consequently, incident light with wavelengths less than 510 nm is absorbed by the CdS layer, which reduces the spectral response of the CdTe solar cell in the short wavelength, resulting in a reduced  $J_{sc}$ .



## Huawei Cadmium Telluride solar Glass

---



### [Cadmium Telluride Photovoltaics Perspective Paper](#)

Jan 16, 2025 · Purpose This document describes the state of cadmium telluride (CdTe) photovoltaic (PV) technology and then provides the perspective of the U.S. Department of ...

### [Comparative study of cadmium telluride solar cell ...](#)

Jul 23, 2024 · Comparative study of cadmium telluride solar cell performance on different TCO-coated substrates under concentrated light intensities Dan Lamb, Oxide and Chalcogenide ...



### [Cadmium Telluride Power Generation Glass Project of Siping](#)

Mar 23, 2025 · Cadmium telluride power generation glass, with a wide range of applications and very typical glass building material characteristics, is a new type of "power generation glass" ...

### [Polycrystalline Thin-Film Research: Cadmium Telluride](#)

Jun 2, 2025 · The semiconductor layers in CdTe solar cells are just a few microns thick, less than one-tenth the diameter of a human hair. This enables implementing durable and inexpensive



...



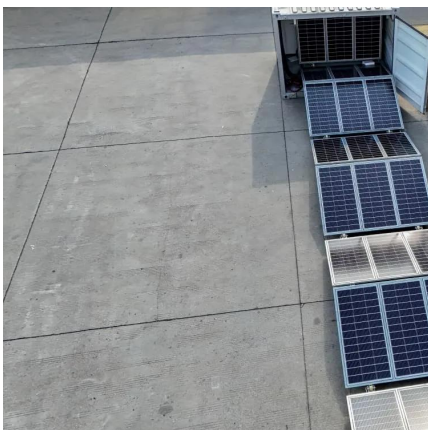
### Research on ultra-thin cadmium telluride heterojunction thin film solar

Jan 1, 2025 · Cadmium Telluride thin film solar cell is very suitable for building integrated photovoltaics due to its high efficiency and excellent stability. To further reduce the production ...



### [Climate-zone-dependent applicability of semi-transparent cadmium](#)

May 15, 2023 · Climate-zone-dependent applicability of semi-transparent cadmium-telluride-type solar cells as a building material with display characteristics



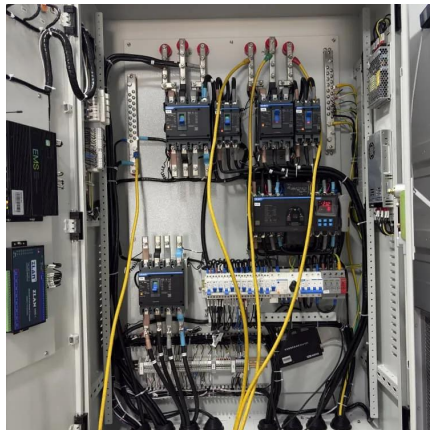
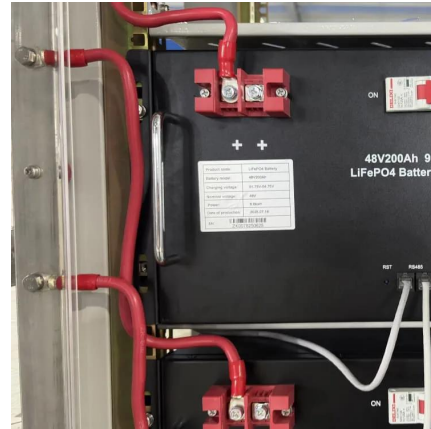
### [CdTe Solar Glass Company China, Cadmium Telluride Solar ...](#)

CdTe Photovoltaic Glass Cadmium Telluride (CdTe) photovoltaic glass is a type of solar photovoltaic glass that incorporates thin-film photovoltaic technology based on the ...



### Cadmium Telluride Solar Photovoltaic Glass: Current Global ...

Jun 20, 2024 · Cadmium Telluride (CdTe) solar photovoltaic glass has emerged as a high-efficiency and environmentally friendly solar technology in recent years. In the rapidly growing ...



### Cadmium telluride power generation glass, a new future for ...

Oct 11, 2024 · As an innovative green building material, cadmium telluride power generation glass is gradually showing its unique charm and broad application prospects in the fields of energy ...

## Contact Us

---

For catalog requests, pricing, or partnerships, please visit:  
<https://llsolarenergy.co.za>

**Scan QR Code for More Information**



<https://llsolarenergy.co.za>