

How to use the electric power remote mobile base station





Overview

How do remote control base stations function?

Remote control base stations function using DC-remote circuits, which are connected through private telephone circuits or radio links. In some remote system configurations, they use four wire audio paths to connect the base station to the console. Other systems only need a two-wire link.

What is a mobile base station?

A mobile base station, also called a base transceiver station (BTS), is a fixed radio transceiver in any mobile communication network or wide area network (WAN). The base station connects mobile devices to the network and routes them to other terminals in the network or to the core network of a mobile operator. [Read more Explore Mobile base.](#)

How do I choose a remote power station?

To start the process of selecting a remote power station, you will need to make a list of your electronic equipment power draw. The remote system size you choose depends on the amount of electricity you require (Watts & Duty Hours/Day), and the available solar insolation in the area where the equipment will be located.

What is a remote radio unit?

A remote radio unit (RRU), commonly referred to as a Remote Radio Head (RRH), is a transceiver that you'll find on wireless base stations. These transceivers connect wireless devices with wireless networks. RRUs have become one of the most important Mobile base station designers often need to manage the following aspects:



How to use the electric power remote mobile base station

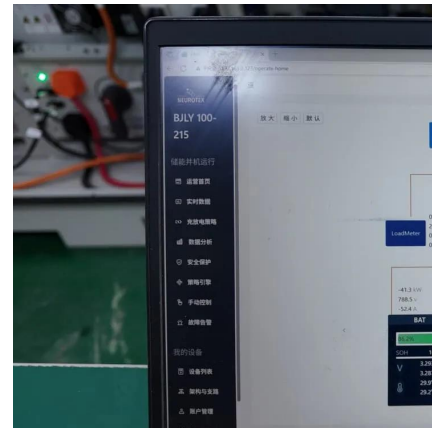


Mobile Power Station 7 M

Oct 29, 2024 · REON provides intelligent, reliable, and accessible energy storage & microgrid solutions that accelerate the global adoption of renewable energy. Our cutting-edge ...

[Mobile base station site as a virtual power plant for grid ...](#)

Mar 1, 2025 · A noticeable research gap exists concerning measuring full activation time for fast frequency reserve (FFR) product while using batteries from mobile network base stations. Our ...



[Self-Powered Mobile Masts for rural connectivity](#)

Why is it hard to power mobile base stations in rural or remote areas? Mobile networks cannot work without base stations, and base stations cannot work without electricity. Vodafone's ...

[Telecom Towers and Remote Base Stations](#)

Aug 12, 2025 · Discover comprehensive insights into powering telecom towers and remote base stations with off-grid solar and energy storage solutions. Explore LiFePO4 batteries, system ...



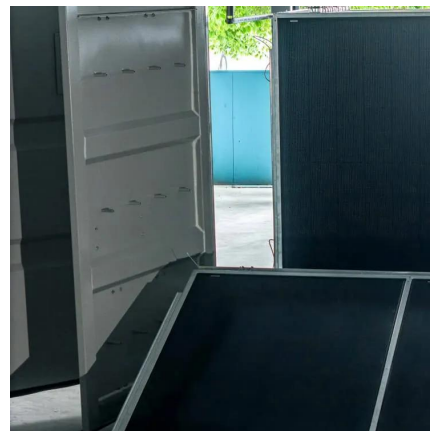
Mobile Base Station Energy Storage Principle: How It Keeps ...

May 6, 2025 · Ever wondered how your phone stays connected during a blackout? Meet the unsung hero of modern connectivity - mobile base station energy storage systems. These ...



Smart Power of Communication Base Station

Using 5G Internet of things technology, combined with data analysis, to improve the traditional power management level, and to achieve the visible, measurable, controllable, and linkage of ...



Mobile power station: description, principle of operation, ...

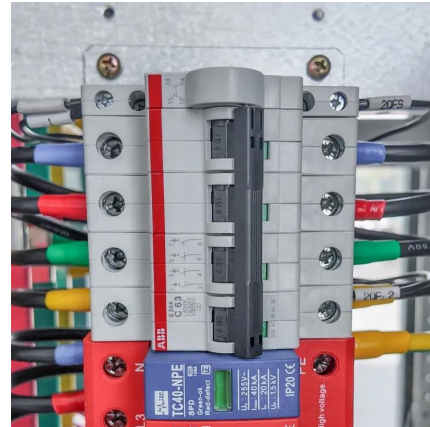
General information about mobile power plants
The need for electricity can occur in a variety of conditions. For example, on a construction site remote from main power lines. Or in the places ...





Communication Base Station Backup Battery

High-capacity energy storage solutions, specifically designed for communication base stations and weather stations, with strong weather resistance to ensure continuous operation of ...



Contact Us

For catalog requests, pricing, or partnerships, please visit:
<https://llsolarenergy.co.za>

Scan QR Code for More Information



<https://llsolarenergy.co.za>