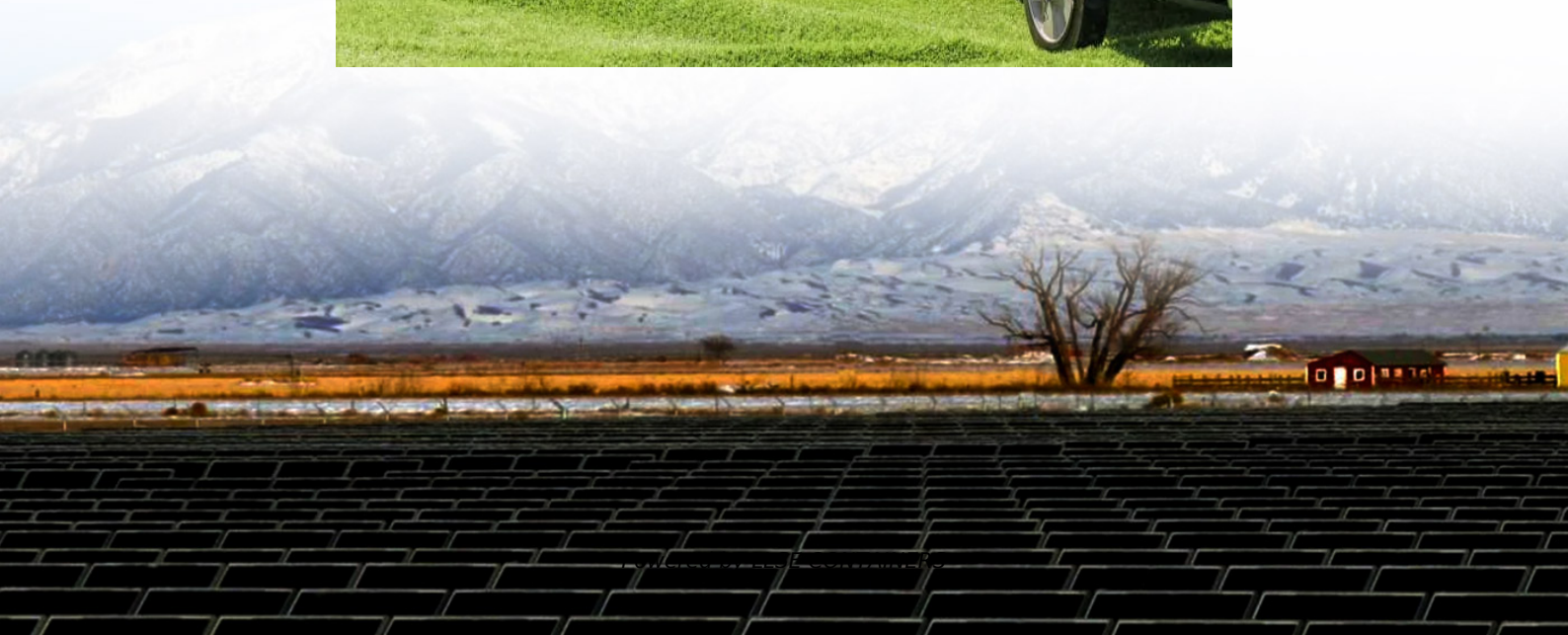


How to control the current of the battery cabinet





Overview

What is a battery current control system?

The current control system is commanded by a superimposed battery voltage controller aimed at bringing the battery terminal voltage to the fully-charged state while also limiting the maximum battery charging current.

What type of batteries are used in energy storage cabinets?

Lithium batteries have become the most commonly used battery type in modern energy storage cabinets due to their high energy density, long life, low self-discharge rate and fast charge and discharge speed.

How to control battery charging current from regenerative power?

A control block is proposed based on the strategy used in to control battery charging current from regenerative power. A switch in the cb2 block of Fig. 3 is used, which passes the generated switching signal only when V_{SC} is more than 58V. .

Are battery charging control systems suitable for different battery types?

This paper presents the design of battery charging control system suitable for different battery types. A PI controller-based battery current control system is designed with the aim of achieving robust control system behavior over a wide range of battery internal resistance variations.



How to control the current of the battery cabinet



[Application of Hall Current Sensor in Battery Monitoring ...](#)

Sep 13, 2024 · Once the current is abnormal, the remote monitoring system immediately issues an alarm, and the maintenance personnel can respond quickly and solve the problem, ...

Understanding the Lithium

Mar 17, 2025 · Lithium - battery aging cabinets are equipped with advanced control systems that can precisely regulate charging and discharging parameters. For example, they can control ...



[-48 VDC Battery Cabinet Installation and User Manual ...](#)

Apr 21, 2022 · Although the DC voltage is not hazardously high, the battery can deliver large amounts of current. Exercise extreme caution not to inadvertently contact or have any tool ...

[Eaton Samsung Gen 3 Battery Cabinet Installation and ...](#)

Mar 25, 2025 · The battery cabinet is heavy [with battery modules installed] (see Table 3). If unpacking and unloading instructions are not closely followed, the cabinet may tip and cause



...



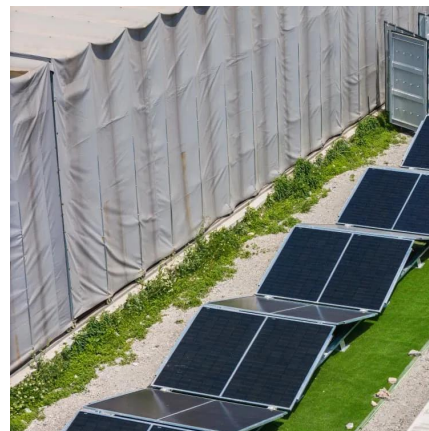
[Battery Current and Voltage Control System Design with](#)

Oct 8, 2014 · A PI controller-based battery current control system is designed with the aim of achieving robust control system behavior over a wide range of battery internal resistance ...



[How to design an energy storage cabinet: integration and ...](#)

Jan 3, 2025 · This article will introduce in detail how to design an energy storage cabinet device, and focus on how to integrate key components such as PCS (power conversion system), EMS ...



[The Essential Guide to Selecting Electrical Control Cabinets ...](#)

Nov 7, 2025 · As a leading manufacturer of polymer, ternary lithium soft-pack batteries, and distributor of LiFePO4 and lithium titanate batteries, DLCPO Power Technology understands ...





BC55 Battery Cabinet Installation Operation.

Feb 3, 2025 · Connects the battery cabinet to the UPS Automatically locks the battery cabinet door to prevent access to the cabinet interior during its operation as a power backup to the UPS.

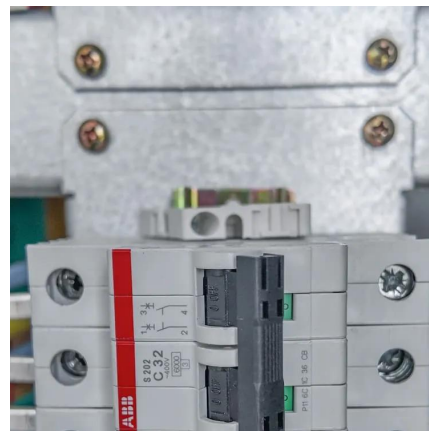


Simple installation manual of DC cabinet

Jun 4, 2024 · Simple installation manual of DC cabinet 1. Basic components The DC cabinet mainly collects and distributes current to each battery cluster to realize charge and discharge ...

HOW TO ADJUST THE VOLTAGE AND CURRENT OF THE BATTERY CABINET

How to install the outdoor cabinet battery energy storage cabinet This guide provides step-by-step instructions on how to install your R-BOX-OC outdoor solar battery cabinet, including site ...



Contact Us

For catalog requests, pricing, or partnerships, please visit:
<https://lsolarenergy.co.za>



Scan QR Code for More Information



<https://llolarenergy.co.za>