

How to connect the ground wire of UPS battery cabinet





Overview

How do I connect a battery cabinet to an ups?

Connect the DC+ and DC- cables to the DC+ and DC- terminals. Connect the power cables in the UPS. If more battery cabinets are part of the solution, connect all battery cabinets to the UPS according to the diagram below.

How do you ground an ups cabinet?

Finally, bond UPS cabinets to the nearest interior ground bus, using a green, insulated 2 AWG grounding wire. Installers typically mount the main ground bar (MGB) of a UPS room 24 in. above the finished floor and use zones for best grounding results. Your UPS will do its job only when it has the right infrastructure to support it.

How to connect a UPS battery to a host?

F. Before connecting the battery cables from the battery cabinet to the host, measure the battery voltage with a multimeter, which should be 103.36V, and check if the positive and negative leads are correctly connected. If there is a battery box, connect the batteries in series and link them to the host as required. 2. UPS Battery Wiring Example A.

How to install a ups power supply?

The most important aspect of installing a UPS power supply is connecting the batteries. The key to connecting the batteries is to link the positive terminal to the negative terminal, connecting each battery in series, and then leading out two power cables, one positive and one negative, to connect to the air switch.

C.



How to connect the ground wire of UPS battery cabinet



[Overview of Grounding of APC UPS Power Supply Unit \(part 2\)](#)

Apr 23, 2025 · 2. Grounding of UPS body part The APC UPS body, its casing, battery cabinet (rack), etc. need to be connected to the electrical grounding device using grounding wires. ...

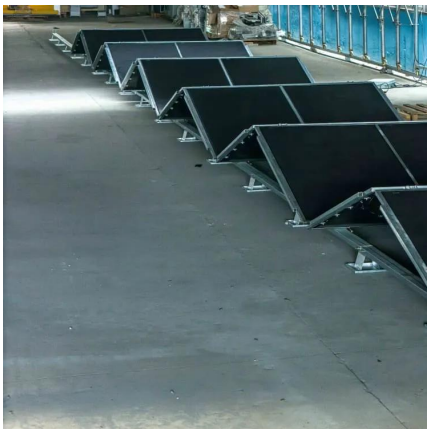
[Connecting UPS Grounds and Neutrals, EC& M](#)

Oct 1, 2002 · A multi-module UPS system fed from a 3-phase, 3-wire, grounded wye supply is a separately derived system because the neutral doesn't connect to the output of the UPS ...



SL-25657_REV3_01-21

Feb 27, 2020 · Connect the ground wire (PE) to the ground screw on the rear of the UPS. Place the battery cable ring lug on the terminal block, add the insulating plate, then insert the screw ...



[7 grounding, 8 remote battery cabinets/racks, 9 battery ...](#)

The battery cabinets have ground studs. Use an equipment-grounding conductor to connect the lugs of the cabinets together and to connect the cabinets to the ground bus bar in the UPS ...



[Eaton Top Wiring Kit for Type S Battery Cabinet installation ...](#)

Mar 31, 2025 · The top wiring kit bolts to the top of the Samsung battery cabinet and provides customer landing terminals for DC power, an AC power terminal block for the battery cabinet ...



[How to do UPS Battery Wiring?](#)

1 day ago · Learn how to wire UPS batteries safely with our detailed step-by-step guide. From installation location to proper battery connection and wiring tips, ensure a secure and efficient ...



[Understanding Neutral Earthing in UPS Systems](#)

5 days ago · The main focus of discussion in this section will be double conversion UPS systems with a transformer, batteries, and an inverter in addition to or instead of a rectifier. Power ...





Contact Us

For catalog requests, pricing, or partnerships, please visit:
<https://llsolarenergy.co.za>

Scan QR Code for More Information



<https://llsolarenergy.co.za>