

How to configure UPS uninterruptible power supply





Overview

What is an uninterruptible power supply (UPS)?

An uninterruptible power supply (UPS) is a component that continues operating for at least a brief period of time when the power supply is interrupted. In today's technology-driven world, an uninterruptible power supply is crucial to keep our electronic devices and systems functioning without interruption.

What is a ups & why is it important?

A UPS provides a temporary power source during outages and helps prevent such issues. An Uninterruptible Power Supply (UPS) is crucial for safeguarding electronic devices and systems against power outages. It provides instant backup power, preventing data loss, equipment damage, and disruptions.

How do you connect a ups to a power supply?

Connecting a UPS to your power supply involves several straightforward steps. First, identify the devices requiring backup power and calculate their combined wattage to select an appropriately sized UPS. Next, plug the UPS into a wall outlet and charge it according to the manufacturer's instructions.

What is a double conversion UPS & how does it work?

Online/Double Conversion UPS: This type provides the highest level of protection as it constantly powers devices through its battery, rectifying incoming AC power. It's commonly used for data centers and critical systems. Connecting a UPS to your power supply involves several straightforward steps.



How to configure UPS uninterruptible power supply



[Eaton UPS fundamentals handbook](#)

Jul 2, 2025 · Generally used to provide power redundancy to equipment with a single power supply, the eATS automatically transfers power between sources with no interruption if the ...

[How to Install Uninterruptible Power Supply: A Step-By-](#)

What is a UPS? A UPS, short for uninterruptible power supply, is a vital electrical device designed to safeguard electronic equipment from power disruptions by supplying emergency power ...

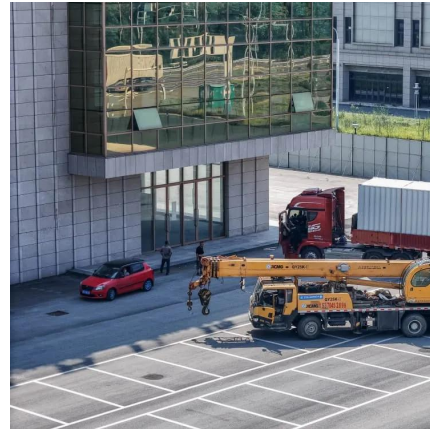


[How to properly configure UPS uninterruptible power supply_UPS_](#)

Jul 7, 2018 · When we choose UPS uninterruptible power supply, we usually encounter how to configure the load equipment with a long delay and how much the UPS battery capacity can ...

[How to Connect UPS to Power Supply](#)

An uninterruptible power supply (UPS) is a component that continues operating for at least a brief period of time when the power supply is interrupted. In today's technology-driven world, an ...



[How to install an uninterruptible power supply?](#)

Dec 1, 2024 · In this step-by-step guide, you will learn how to install an Uninterruptible Power Supply (UPS) to safeguard your electronic devices against unexpected power outages. The ...



[Best Practices for Installing an Uninterruptible Power Supply](#)

Whether the UPS is being used in a home office, commercial facility, or industrial environment, proper installation is essential for ensuring both performance and safety. This guide outlines ...



[How to Install Uninterruptible Power Supply: A Step-By-Step ...](#)

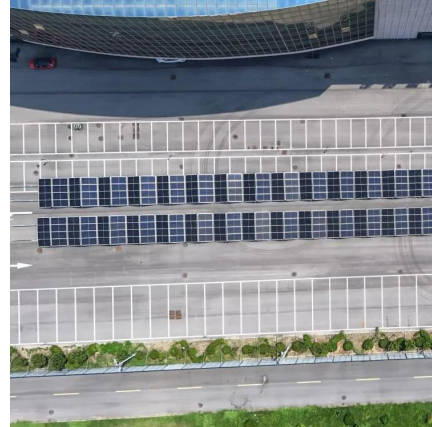
In my daily life, I've come to realize just how essential an uninterruptible power supply (UPS) is, whether it's at home or in my workplace. Our world is increasingly reliant on digital technology, ...





UPS Installation

Jul 5, 2024 · A UPS (Uninterruptible Power Supply) is essential to protect your electronic devices from power interruptions and voltage fluctuations. It provides backup power during outages, ...



Contact Us

For catalog requests, pricing, or partnerships, please visit:
<https://llsolarenergy.co.za>

Scan QR Code for More Information



<https://llsolarenergy.co.za>