

How to check the output current of the battery cabinet





Overview

How to measure the current output of a battery with a multimeter?

To measure the current output of a battery with a multimeter, follow these steps: 1. Prepare the Battery and Multimeter Disconnect the battery from any circuit. This prevents interference during measurement. 2. Set Up the Multimeter Switch the multimeter to measure DC current.

How do you measure the current of a battery?

Measure the Current Create a circuit with the multimeter in series with the battery and a load (like a resistor). Use Ohm's Law to calculate current. For example, a 5V battery connected to a 10-ohm resistor draws 0.5 amperes ($I = V/R = 5V/10\Omega$).

What should you look for in a battery multimeter?

Range: Ensure the multimeter covers the voltage range of the batteries you'll test. Additional Features: Look for auto-ranging, continuity testing, and capacitance measurements. Reliability: Choose a reputable brand like Keysight with positive reviews. A warranty adds peace of mind.

How do you test a lithium ion battery?

Connect the multimeter probes to the battery, ensuring proper polarity. Read the voltage displayed on the multimeter. A reading close to the rated voltage indicates a good battery, while a significantly lower reading may indicate a drained or dead battery requiring replacement. 2. Testing a Lithium-Ion Battery:



How to check the output current of the battery cabinet



[How to Measure Current of a Battery Using Multimeter? A ...](#)

Jun 23, 2025 · Understanding a battery's current output is crucial in numerous applications, from simple electronics projects to complex industrial systems. Whether you're a seasoned ...

[How To Measure The Power Output From A Battery](#)

Apr 24, 2017 · Power Calculations Power is the product of current and voltage. Therefore, in order to calculate the power output of a battery, you must measure these two aspects of a circuit. ...



[Battery cabinet and current output control](#)

Lithium batteries have become the most commonly used battery type in modern energy storage cabinets due to their high energy density, long life, low self-discharge rate and fast charge and ...



[Simplify Voltage and Current Measurement in Battery ...](#)

Dec 23, 2023 · Amplifier Usage in Battery Test Equipment In typical systems, a Buck converter is used as the power source for battery charging and a Boost converter is used for battery ...



[How to Test a Battery Using a Multimeter ...](#)

Steps for Measuring Battery Current using a Multimeter To measure the current output of a battery with a multimeter, follow these steps: 1. ...



[How To Measure The Power Output From A ...](#)

Apr 24, 2017 · Power Calculations Power is the product of current and voltage. Therefore, in order to calculate the power output of a battery, you ...



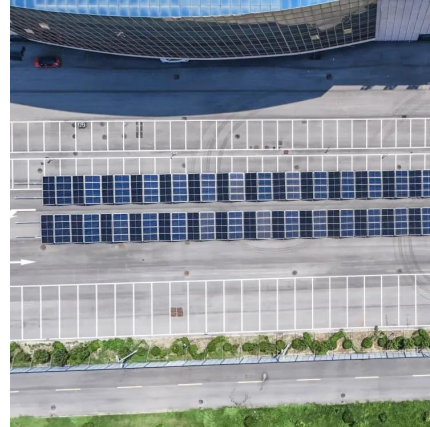
[How to calculate the output current of the battery cabinet](#)

How to Calculate Battery kWh While the basic formula for kWh remains consistent ($\text{kWh} = \text{Voltage} \times \text{Current} \times \text{Time}$), the specific methods for calculating kWh may vary for different battery ...



[Battery cabinet power test](#)

User accessible without opening door of cabinet. 100BaseT Ethernet Port. Certifications: UL1778, UL1989, IBC 2018. Alpine Power Systems is a Platinum Distributor of EnerSys battery ...



[Power-On and Commissioning](#)

Procedure Check that the phase sequence of cables between the battery switch cabinet and the UPS is correct. Turn off all switches in the battery switch cabinet and check the insulation. Use ...

[How to Test a Battery Using a Multimeter-Step by Step Guide](#)

Steps for Measuring Battery Current using a Multimeter To measure the current output of a battery with a multimeter, follow these steps: 1. Prepare the Battery and Multimeter Disconnect ...



[Learn How to Test a Battery Using a Multimeter](#)

When to Check A BatteryHow to Check Battery Voltage Using A MultimeterHow to Check Battery Current Using A MultimeterHow to Test A Car Battery with A MultimeterFAQTo accurately measure the instantaneous current output of a battery using a multimeter, follow these steps: 1. Prepare the battery and multimeter:Ensure the battery is disconnected from any circuit. This is to prevent any external circuitry from affecting the measurement. 2. Set up the multimeter:Set the multimeter to measure DC current. Choose



the See more on tameson Published: Feb 20, 2022Mitsubishi Electric[PDF]

UBC80 Battery Cabinet Installation, Operation,

Feb 3, 2025 · Review the battery system schematic that is located attached to the inside of a cabinet door to determine the number of batteries that need to be installed in the cabinet, the ...

[UBC80 Battery Cabinet Installation, Operation.](#)

Feb 3, 2025 · Review the battery system schematic that is located attached to the inside of a cabinet door to determine the number of batteries that need to be installed in the cabinet, the ...



[Learn How to Test a Battery Using a Multimeter](#)

Feb 21, 2022 · How to check battery current using a multimeter To accurately measure the instantaneous current output of a battery using a multimeter, follow these steps: Prepare the ...



Contact Us

For catalog requests, pricing, or partnerships, please visit:
<https://llsolarenergy.co.za>



Scan QR Code for More Information



<https://llolarenergy.co.za>