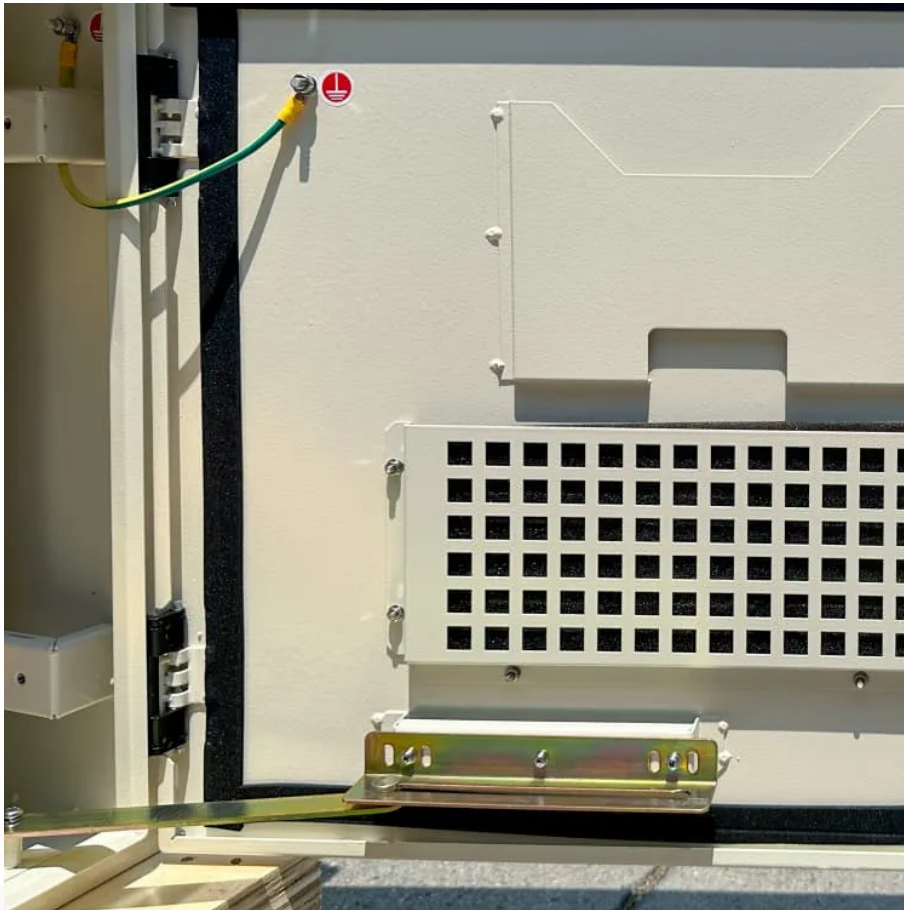


How much power can a 24v to 220v inverter carry





Overview

What is a 24V inverter?

A 24V inverter is a power conversion device whose main function is to convert 24V DC power into AC power (usually 220V or 110V, depending on the specific model and application). The DC to AC power inverters offer you 110V, 120V, 220V, 230V, or 240V AC energy to charge your electronics or appliances.

How much battery does a 24 volt inverter use?

For 24-volt inverters, it is 10 %. The battery capacity for a 12-volt Mass Sine 12/1200, for instance, is 240 Ah, while a 24-volt Mass Sine 24/1500 inverter would require at least 150 Ah. The indicated battery capacity is only for the inverter. The capacity required for other loads should be added to it. How much power does an inverter consume?

.

How much battery does a 12 volt inverter need?

As a rule of thumb, the minimum required battery capacity for a 12-volt system is around 20 % of the inverter capacity. For 24-volt inverters, it is 10 %. The battery capacity for a 12-volt Mass Sine 12/1200, for instance, is 240 Ah, while a 24-volt Mass Sine 24/1500 inverter would require at least 150 Ah.

What is a 24V 600W inverter?

Inverter for home has overload protection, overheat protection, short circuit protection, and so on. 24V 600w inverter with peak power 1200w, which is a modified sine wave, converts your car battery power to AC power 110/120 Volt or 220/230/240 Volt for options, with a safe charging design to give your device multi-protection.



How much power can a 24v to 220v inverter carry

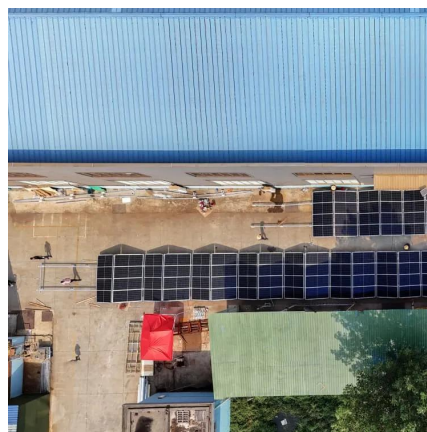


[Best Power Inverters 24V to 220V for Reliable AC Conversion](#)

Oct 11, 2025 · Choosing the best power inverter 24V to 220V is essential for efficiently converting DC power from batteries or solar systems into usable AC power for your devices. Whether you ...

[24v Inverter, 24v DC to 120v/240v AC Power Inverter , inverter...](#)

The power inverter can convert 24V DC to 110V/120V or 220V/230V AC. Equipped with a USB port, the 24V inverter can be used for multi-purpose charging. 24V inverter has multiple safety ...



[How to Calculate the Maximum Output Power of a Power Inverter](#)

For a 48V 100A battery with a 48V to 220V inverter, we can get 220V and 21.8A as the maximum power draw ($100A/4.58 = 21.8A$). $220V/48V = 4.58$, so the step up voltage is 4.58. Also ...

[How many appliances can a 24 Volt 220v Inverter power?](#)

Sep 3, 2025 · And then there's the 12 Inverter 220v, which also offers a reliable power conversion solution. For those with high - power demands, our Inverter 48v 220v 6000w can



handle ...



[How to Choose the Best Inverter 24V to 220V for Your Power ...](#)

4 days ago · The 24V input typically comes from two 12V batteries wired in series or a dedicated 24V battery bank, which provides more efficient power delivery than 12V systems for higher ...



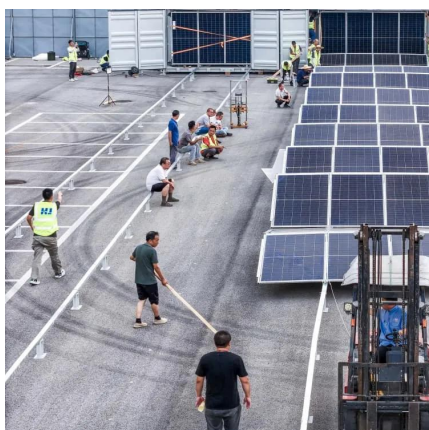
[High-Efficiency 24V DC to 220V AC Portable Inverter 3kw](#)

Nov 23, 2025 · Home Portable Inverter 24V DC to 220V AC 3kw 3000w 6000w 6kw Power inverter converts 12V or 24V DC from battery or car lighter to AC 110V or 220V household ...



[What Will An Inverter Run & For How Long? \(With Calculator\)](#)

Mar 3, 2023 · I saw on many forums that most people are confused about what they can run on their 1000,1500,2000,3000, & 5000-watt inverter and how long will their inverter last with a ...





Frequently Asked Questions about Inverters

Frequently Asked Questions about Inverters How much battery capacity do I need with an inverter? As a rule of thumb, the minimum required battery capacity for a 12-volt system is ...



Best 24V to 220V Power Inverters for Home, RV, and Solar ...

Aug 15, 2025 · Choosing the right power inverter 24V to 220V is crucial for efficient energy conversion and reliable power supply in various settings such as homes, RVs, trucks, and off ...

Contact Us

For catalog requests, pricing, or partnerships, please visit:
<https://llsolarenergy.co.za>

Scan QR Code for More Information



<https://llolarenergy.co.za>