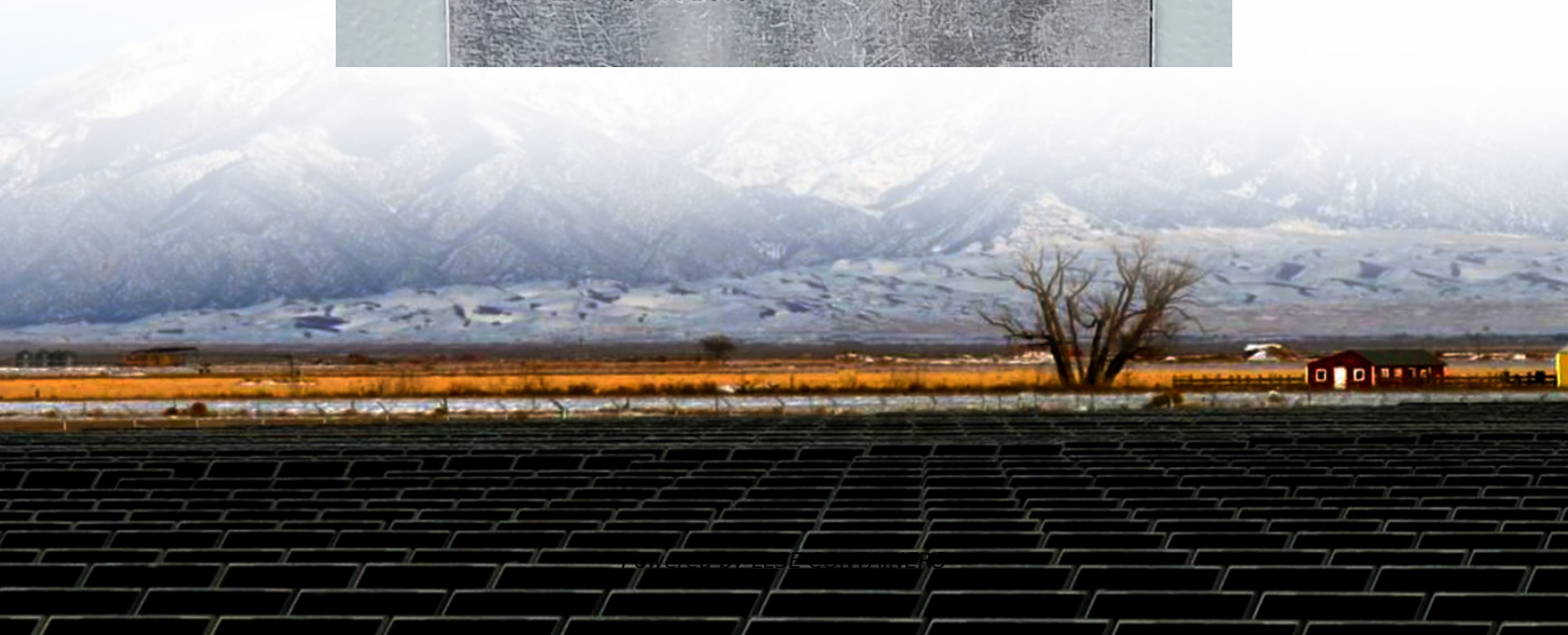


How many watts of solar panels are connected to the inverter





Overview

How many volts can a solar inverter handle?

Each inverter comes with its specific ratings, including input voltage, output power, and the ability to manage several strings of solar panels. For instance, if your inverter supports a maximum input voltage of 600 volts and your solar panel system operates at a lower voltage, you are in safe territory.

How much wattage should a solar inverter have?

If your inverter has a capacity of 3000 watts, the combined wattage of all the panels should not be more than 3000 watts. To find out the total wattage, just add up the wattage ratings of all the solar panels you have.

Can a solar system have multiple inverters?

A: Yes, using multiple inverters is a common approach for larger solar panel systems. In this setup, the system can be designed with several inverters, allowing you to connect more panels overall. Each inverter can manage a specific number of panels, and this can enhance system performance and efficiency.

How many solar panels can a 600V inverter connect?

If an inverter has a maximum input voltage of 600V and each panel produces 40V, you could connect up to 15 panels in series ($15 \times 40V = 600V$). Going over this voltage limit can harm the inverter or make it shut down, making your solar system less effective or even unusable. Equally important is the minimum input voltage.



How many watts of solar panels are connected to the inverter

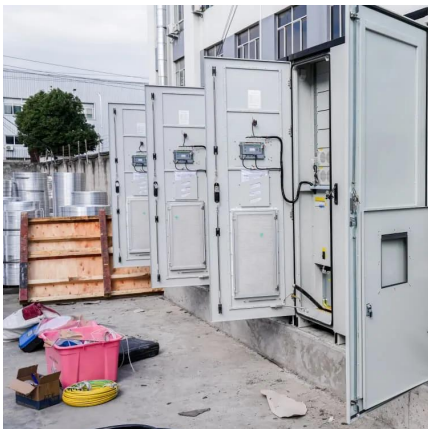
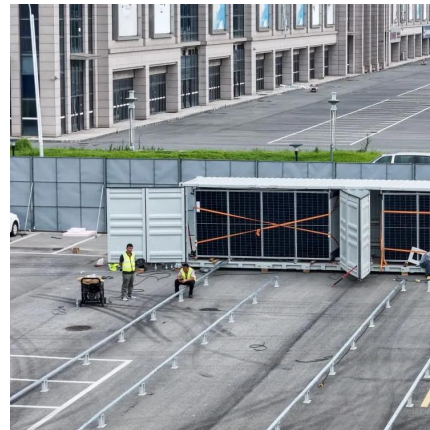


[How Many Solar Panels Can One Inverter Handle?](#)

Sep 23, 2025 · How many solar panels for a 2000-watt inverter? For a 2000-watt inverter, the number of solar panels depends on panel wattage, but a general guideline is around 6 to 8 ...

[How many solar panels are needed for a 1000 ...](#)

Jul 23, 2024 · As the core component of a solar energy system, determining the number of solar panels is a crucial step in system design. This article ...



[How Many Panels Can I Put on My Inverter?](#)

Oct 10, 2022 · If you're wondering how many solar panels you can put on your inverter, the answer is: it depends. The capacity of an inverter is measured in kilowatts (kW), and most ...

[How Many Panels Can I Put on My Inverter?](#)

Oct 10, 2022 · If you're wondering how many solar panels you can put on your inverter, the answer is: it depends. The capacity of an inverter is ...



[How Many Solar Panels Can Connect to Inverter?](#)

Jan 28, 2022 · The specifications will vary so make sure to check the inverter before connecting any solar panel. Generally speaking, the inverter can handle 30% more power than the rated ...



[How many panels can I connect to one inverter?](#)

4 days ago · Find out how many solar panels you can safely and efficiently connect to one inverter. Read our tips on optimal sizing for maximum yield.



[How Many Solar Panels Can One Inverter ...](#)

Sep 23, 2025 · How many solar panels for a 2000-watt inverter? For a 2000-watt inverter, the number of solar panels depends on panel wattage, but a ...



[How Many Solar Panels Can I Connect To An Inverter?](#)

For instance, if an inverter has a maximum wattage rating of 1,000 watts, then this would indicate that you can connect up to 10 100-watt solar panels together.



[How Many Solar Panels Can I Connect to My Inverter?](#)

How to Calculate Inverter Solar Panel Capacity
Overclocking Inverters Explained
Reminders Before Overclocking An Inverter
What Is Inverter String Sizing?
Tips For Running An Inverter on Solar Panels
Conclusion
There are many ways to calculate inverter sizes, but we will stick to the simplest methods. These apply to any solar power system and any inverter setup. There are two basic formulas: Inverter watt capacity = solar array size or: Inverter watt capacity x 130% = maximum solar panel array size
The first one is straightforward... See more on [portablesolarexpert](#) [greenbusinessbarbados](#)

How Many Solar Panels Can Go On One Inverter?

Oct 17, 2025 · The maximum number of solar panels that can be connected to a single string inverter is $13 \times 1000 = 13 \text{ kW}$ per MPPT. If the inverter is from a reliable model, it will limit the ...

[How Many Solar Panels Can I Connect to an ...](#)

Oct 28, 2022 · Hopefully this information has resolved the question 'how many solar panels can I connect to an inverter?' If you're still in any doubt ...



[How many solar panels can an inverter ...](#)

Sep 20, 2024 · Solar panels are a crucial component of your solar energy system, but understanding how many can be connected to your inverter is ...



[The Only Inverter Size Chart You'll Ever Need](#)

Sep 25, 2023 · We created a comprehensive inverter size chart to help you select the correct inverter to power your appliances. The need for an ...



[How Many Solar Panels Can Be Connected To Solar Inverter?](#)

Mar 7, 2025 · When configuring the number of solar panels, the inverter needs to be calculated and analyzed in detail based on the maximum solar input power, solar input voltage range, ...





[How Many Solar Panels Can One Inverter ...](#)

Sep 23, 2025 · To manually calculate the string size, divide the inverter's voltage input range by the voltage output of an individual solar panel, ...



[Mixing solar panels - Dos and Don'ts](#)

The Secrets to Connecting Different Solar panels in Series or Parallel- The Definitive Guide In this article we show you: The best practices for mixing different solar panels How to squeeze more ...

[How to Calculate Solar Panel, Inverter, Battery Parameters](#)

May 5, 2025 · In this post I have explained through calculations how to select and interface the solar panel, inverter and charger controller combinations correctly, for acquiring the most ...



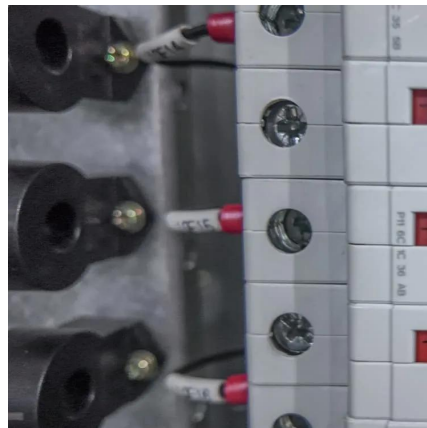
[Solar Panel Wiring Basics: How to Wire Solar ...](#)

To know how to connect solar panels in series and parallel, read the discussion above. Do you need reliable solar panels, an inverter, a ...



[How to connect solar panels to inverter and ...](#)

May 7, 2025 · This guide explains how to connect solar panels to an inverter safely and effectively. We'll also discuss factors like inverter capacity to ...



[How Many Solar Panels Can Be Connected To Solar Inverter?](#)

Mar 7, 2025 · When configuring the number of solar panels, we need to perform detailed calculations and analyses based on the inverter's maximum solar input power, solar input ...

[How to Calculate Solar Panel, Inverter, Battery ...](#)

May 5, 2025 · In this post I have explained through calculations how to select and interface the solar panel, inverter and charger controller combinations ...



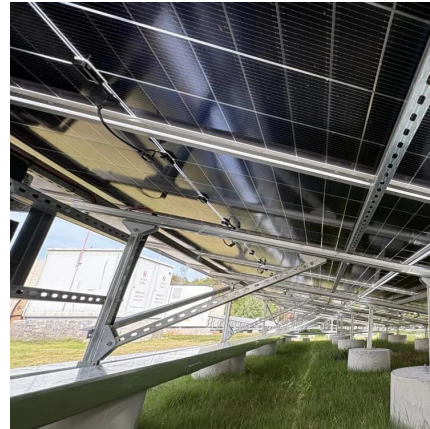
[How Many Solar Panels Can Go On One Inverter?](#)

Oct 17, 2025 · The maximum number of solar panels that can be connected to a single string inverter is $13 * 1000 = 13 \text{ kW}$ per MPPT. If the inverter is from a reliable model, it will limit the ...



[How many solar panels can an inverter handle](#)

Sep 20, 2024 · Solar panels are a crucial component of your solar energy system, but understanding how many can be connected to your inverter is crucial for optimal performance. ...

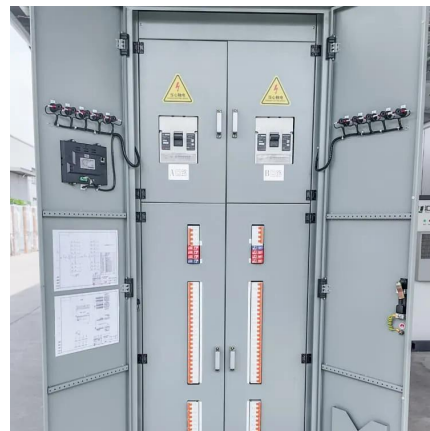


[How Many Solar Panels Can I Connect to an ...](#)

3 days ago · Learn how to optimize your solar power system by understanding how many solar panels can be connected to an inverter. ...

[How Many Solar Panels Can I Connect to an Inverter? A...](#)

3 days ago · Learn how to optimize your solar power system by understanding how many solar panels can be connected to an inverter. Explore inverter specifications, wiring configurations, ...



[How to Wire Solar Panels to Inverter: ...](#)

Mar 8, 2024 · How to Wire Solar Panels to Inverter: Connect them in series, parallel, or a combination of both, depending on the voltage & current output.



Contact Us

For catalog requests, pricing, or partnerships, please visit:
<https://llsolarenergy.co.za>

Scan QR Code for More Information



<https://llsolarenergy.co.za>