

# How many watts of solar energy does a 250a battery have





## Overview

---

Can 2 250W solar panels charge a 200Ah battery?

Two 250W solar panels can charge a 12V, 200ah battery with six hours of sunlight. To charge a 12V 200ah battery in an hour requires 12-15 solar panels. The solar panel efficiency, batter depth of discharge, sunlight availability and battery voltage determine how long the charge will be. How Many Watts Solar to Charge a 200ah Battery?

.

How much power can a 250W solar panel produce?

In ideal condition a 250W solar panel produces up to 1000W or 83.3ah. You can connect a larger battery but it would be a waste. A charge controller keeps the current flowing normally and prevents overcharging. But yes, theoretically there is no limit to the battery capacity you can use.

Why is wattage important for a solar panel?

Watts help in determining the configuration and size of the solar panel required. The cost of a solar panel can also be determined by watts, more watts mean more cost. The high-wattage panel will take up less space. So high wattage panel is important for less space areas. High-wattage panels are best when sunlight intensity is low.

How many amps does a solar panel use?

Calculated amps for power small equipment the typical solar panel is 14 to 24 amps. The calculated amps from watts and voltage are 10 to 12 amps per hour for a 200-watt solar panel. The assumed sunlight per day for this calculation is 6 hours. A digital multimeter is used to directly measure the amps.



## How many watts of solar energy does a 250a battery have

---



### [All You Need to Know about Amps, Watts, and Volts in Solar](#)

Understand Amps, Watts, and Volts in Solar energy systems with our comprehensive guide. Learn how these key electrical units impact solar power efficiency and performance. Perfect ...

### [How Many 250W Solar Panels to Charge a 200ah Battery?](#)

How Many Watts Solar to Charge A 200ah Battery? Battery Depth of Discharge How Many Hours of Sunlight Is Needed by A 250W Solar Panel? Accounting For Energy Losses and Low Efficiency What Is The Biggest Battery You Can Connect to A 250W Solar Panel? Conclusion In ideal condition a 250W solar panel produces up to 1000Wh or 83.3ah. You can connect a larger battery but it would be a waste. A charge controller keeps the current flowing normally and prevents overcharging. But yes, theoretically there is no limit to the battery capacity you can use. But you will be wasting money and time as the solar panel will See more on portablesolarexpert RenewableWise



## The Complete Off Grid Solar System Sizing ...

Jul 2, 2025 · An off-grid solar system's size depends on factors such as your daily energy consumption, local sunlight availability, chosen equipment, ...

### [Solar Battery Size Guide: kWh, Inverter](#)



Sep 10, 2025 · Size your solar battery using load profile, critical loads, efficiency and DoD. Calculator matches kWh, inverter and runtime for ...

### [Everything You Should Know About Solar ...](#)

Jun 21, 2024 ·  $I = 250W / 24V = 10.42A$  4. Practical Example Imagine you have a solar panel system with the following specifications: Solar Panel Power: ...



### [Solar Panel and Battery Calculator](#)

Explanation: The panel calculation determines how many panels are needed to meet daily energy needs, while the battery calculation determines storage requirements. 3. Importance of Proper ...

### [How Many Watts Does A Solar Battery Store?](#)

Feb 27, 2025 · Battery capacity, measured in amp hours (Ah), is one of the largest factors in determining how many batteries are needed per solar panel. Higher-capacity batteries can ...







### [Solar Battery Size Guide: kWh, Inverter & Runtime](#)

Sep 10, 2025 · Size your solar battery using load profile, critical loads, efficiency and DoD. Calculator matches kWh, inverter and runtime for code-compliant installs.

### [Everything You Should Know About Solar Amps, Watts, and ...](#)

Jun 21, 2024 ·  $I = 250W / 24V = 10.42A$  4. Practical Example Imagine you have a solar panel system with the following specifications: Solar Panel Power: 300 watts, Solar Panel Voltage: 36 volts ...



### [The Complete Off Grid Solar System Sizing Calculator](#)

Jul 2, 2025 · An off-grid solar system's size depends on factors such as your daily energy consumption, local sunlight availability, chosen equipment, the appliances that

### [How Many 250W Solar Panels to Charge a 200ah Battery?](#)

Solar panel output is measured in watts, so we need to find out how many watts is in an amp. Multiply amps x volts to get the watts. In our example,  $2400W = 12V \ 200ah$ . So our 250W ...



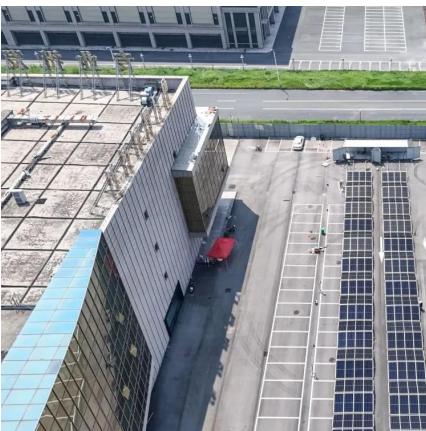


### [How many watts of photovoltaic panels are suitable for a ...](#)

A 100 watt solar panel can provide 500 watts on a clear, sunny day, but even then it would take 10 days. And it is unlikely the panel can give supply 100 watts an hour during the entire period. ...

### [How many watts does a home solar panel battery have](#)

Oct 18, 2024 · In sum, the wattage capacity of home solar panel batteries is contingent upon various factors, including the battery type and household energy demands. While lithium-ion ...



### [How many watts does a home solar panel ...](#)

Oct 18, 2024 · In sum, the wattage capacity of home solar panel batteries is contingent upon various factors, including the battery type and household ...

### [How many watts of solar energy does a 250a battery use](#)

Jan 4, 2024 · A 250Ah battery's consumption of solar energy is contingent upon several critical factors, including 1. Battery voltage, 2. Energy requirements of connected dev...





## Contact Us

---

For catalog requests, pricing, or partnerships, please visit:  
<https://llsolarenergy.co.za>

### Scan QR Code for More Information



<https://llsolarenergy.co.za>