

How many watts does solar glass have per square meter





Overview

What is solar panel watts per square meter (W/M)?

Solar panel watts per square meter (W/m) measures the power output of a solar panel based on its size. Compare solar panels to see which generates most electricity per square meter. A higher W/m value means a solar panel produces more power from a given area. This can help you determine how many solar panels you need for your energy needs.

How many Watts Does a solar panel use per square foot?

The average solar panel's wattage per square foot is 15 watts, though high-efficiency panels can achieve 20+ watts per square foot. Standard residential panel dimensions are approximately 17.5 square feet (6.5' × 3.25'), while commercial panels typically measure around 21 square feet.

How do you calculate solar panel output in watts per square meter?

The formula to calculate the solar panel output and how much energy solar panels produce (in watts) using watts per square meter is as follows: Solar Panel Output (W) = Watts per Square Meter (W/m²) × Area of Solar Panel (m²).

What is watts per square meter?

Watts per square meter is a measurement that quantifies the power output of solar panels relative to their surface area. It indicates how much electricity a solar panel produces per space unit, allowing for comparisons between different panel types and sizes.



How many watts does solar glass have per square meter



[Watts Per Square Meter Solar Panel - The Go-to Guide](#)

Aug 29, 2023 · How many Watts per Square Meter for a Solar Panel? Here is a breakdown of how much energy a solar panel generates.

[Solar Energy Generation Per Square Metre: A Complete Guide](#)

Mar 19, 2025 · With the rising demand for renewable energy, solar panels for home have become a popular choice for homeowners looking to reduce electricity bills and contribute to a ...



[How to Understand Solar Panel Watts Per Square Meter](#)

Jun 14, 2023 · Different panel types, such as monocrystalline, polycrystalline, thin-film, and high-efficiency panels, have varying typical watts per meter square outputs. Maximizing watts per ...



[Solar Panel Output Per Square Meter](#)

Apr 30, 2025 · Discover how much electricity solar panels generate per square meter, explore efficiency factors, technology comparisons, and future innovations in photovoltaic energy.



[Solar Energy Generation Per Square Metre: A ...](#)

Mar 19, 2025 · With the rising demand for renewable energy, solar panels for home have become a popular choice for homeowners looking to reduce ...



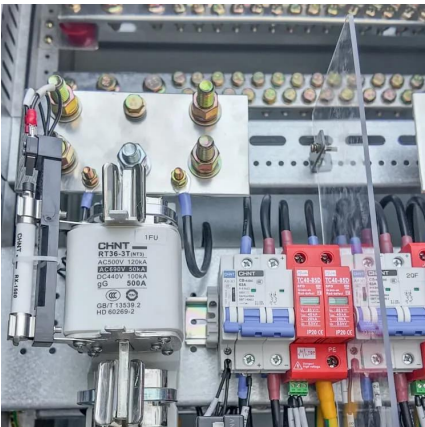
[Solar Panel Wattage Calculation: How To Calculate In 2025?](#)

The average solar panel's wattage per square foot is 15 watts, though high-efficiency panels can achieve 20+ watts per square foot. Standard residential panel dimensions are approximately ...



[Solar Panel Output Per Square Meter](#)

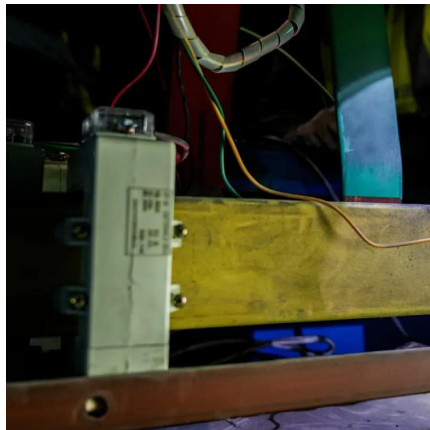
Apr 30, 2025 · Discover how much electricity solar panels generate per square meter, explore efficiency factors, technology comparisons, and ...





[How many watts per square meter is a solar ...](#)

Aug 7, 2024 · 1. The average power output of a solar panel is approximately 150 to 400 watts per square meter, depending on various factors ...

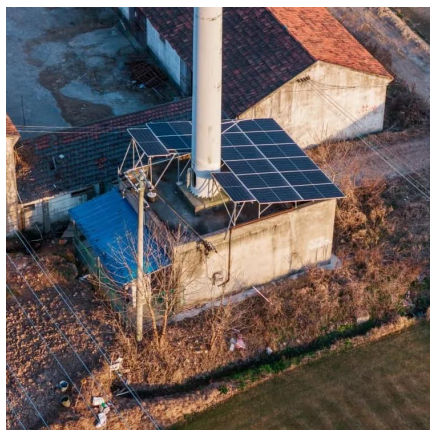


[Solar Panel Wattage Calculation: How To ...](#)

The average solar panel's wattage per square foot is 15 watts, though high-efficiency panels can achieve 20+ watts per square foot. Standard ...

[How Many Watts Does a Glass Photovoltaic Panel Have? The ...](#)

The Surprising Truth About Glass Solar Panel Wattage You know, when most people ask "how many watts does a glass photovoltaic panel have?", they're sort of missing the bigger picture. ...



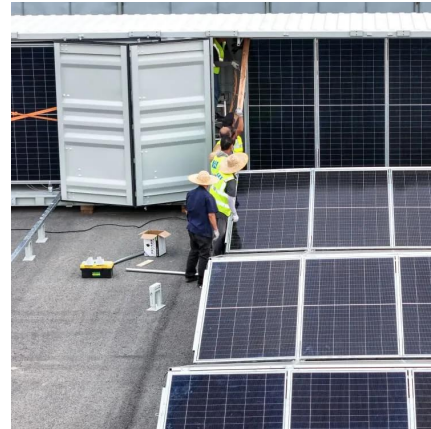
[How many watts per square meter is a solar panel? . NenPower](#)

Aug 7, 2024 · 1. The average power output of a solar panel is approximately 150 to 400 watts per square meter, depending on various factors including the technology used and ...



[How Many Kilowatts Can 1 Square Meter of Solar Panels ...](#)

The Numbers Game: Watts Per Square Meter
Modern solar panels typically deliver 150-250W per m² under ideal conditions. But here's the kicker - that number dances like sunlight on water ...



[How to Understand Solar Panel Watts Per Square Meter](#)

Jun 14, 2023 · Different panel types, such as monocrystalline, polycrystalline, thin-film, and high-efficiency panels, have ...

[How to Choose Solar Glass: A Complete Buying Guide for 2024](#)

4 days ago · Key Features and Specifications to Evaluate To make an informed decision about how to choose solar glass, evaluate these technical parameters: Power Output (W/m²): ...



Contact Us

For catalog requests, pricing, or partnerships, please visit:
<https://llsolarenergy.co.za>



Scan QR Code for More Information



<https://llsolarenergy.co.za>